

Building Data Summary

Project ID: *****
Location: *****
Scope of Work: Electrical
Date: *****



VERACITY

ESTIMATING

Construction Estimation Services

Table with columns: Item #, Ref. Sheet #, Item Description, Unit, Quantity, Wastage, Quantity w/ Wastage, Unit Material Cost, Total Material Cost, Unit Manhour, Hourly Wage, Unit Labor Cost, Total Labor Cost, Sub Cost, Total Trade Cost. Includes Division 01 General Requirements summary row.

DIVISION 26- Electrical

Main table listing items under 'Lighting Fixture' categorized into Site, Level 1, and Level 2. Includes item details like 'E' Site Light, 'LT01' Light Fixture, 'GT-13' Light Fixture, etc., with their respective units and costs.

Building Data Summary

Project ID: ***** Location: Scope of Work: Electrical Date: *****



Table with 15 columns: Item #, Ref. Sheet #, Item Description, Unit, Quantity, Wastage, Quantity w/ Wastage, Unit Material Cost, Total Material Cost, Unit Manhour, Hourly Wage, Unit Labor Cost, Total Labor Cost, Sub Cost, Total Trade Cost. Rows include items 51-71, Level 4, Level 5, Power Fixture, Site, and Level 1.

Building Data Summary

Project ID: *****
Location: *****
Scope of Work: Electrical
Date: *****



Construction Estimation Services

Table with 15 columns: Item #, Ref. Sheet #, Item Description, Unit, Quantity, Wastage, Quantity w/ Wastage, Unit Material Cost, Total Material Cost, Unit Manhour, Hourly Wage, Unit Labor Cost, Total Labor Cost, Sub Cost, Total Trade Cost. Rows include various electrical components like Ceiling Fans, Switches, Duplex Receptacles, etc., grouped into units A7d-1 through A7j-1.

Project ID: *****
Location: *****
Scope of Work: Electrical
Date: *****



Table with columns: Item #, Ref. Sheet #, Item Description, Unit, Quantity, Wastage, Quantity w/ Wastage, Unit Material Cost, Total Material Cost, Unit Manhour, Hourly Wage, Unit Labor Cost, Total Labor Cost, Sub Cost, Total Trade Cost. Includes sections for Power Fixture, Lighting Fixture, and Unit A1-ANSI.

Building Data Summary

Project ID:	*****
Location:	*****
Scope of Work:	Electrical
Date:	*****



Construction Estimation Services

Item #	Ref. Sheet #	Item Description	Unit	Quantity	Wastage	Quantity w/ Wastage	Unit Material Cost	Total Material Cost	Unit Manhour	Hourly Wage	Unit Labor Cost	Total Labor Cost	Sub Cost	Total Trade Cost
		Lighting Fixture												
1254		Ceiling Fan	EA	1	0%	1	\$ 285.00	\$ 285.00	0.758	\$ 64.00	\$ 48.51	\$ 48.51	\$	334
1255		Wall Socket Light	EA	1	0%	1	\$ 320.63	\$ 320.63	0.820	\$ 64.00	\$ 52.48	\$ 52.48	\$	373
		Unit E2-3												
		Power Fixture												
1256		Switch	EA	1	0%	1	\$ 9.32	\$ 9.32	0.200	\$ 64.00	\$ 12.80	\$ 12.80	\$	22
1257		TV Outlet	EA	1	0%	1	\$ 35.62	\$ 35.62	0.400	\$ 64.00	\$ 25.60	\$ 25.60	\$	61
1258		Tele/Data Outlet	EA	1	0%	1	\$ 35.62	\$ 35.62	0.400	\$ 64.00	\$ 25.60	\$ 25.60	\$	61
1259		Duplex Receptacle	EA	3	0%	3	\$ 28.65	\$ 85.95	0.325	\$ 64.00	\$ 20.80	\$ 62.40	\$	148
1260		WP GFCI Duplex Receptacle	EA	2	0%	2	\$ 29.37	\$ 58.73	0.298	\$ 64.00	\$ 19.07	\$ 38.14	\$	97
		Lighting Fixture												
1261		Ceiling Fan	EA	1	0%	1	\$ 285.00	\$ 285.00	0.758	\$ 64.00	\$ 48.51	\$ 48.51	\$	334
1262		Wall Socket Light	EA	1	0%	1	\$ 320.63	\$ 320.63	0.820	\$ 64.00	\$ 52.48	\$ 52.48	\$	373
		Unit E2b (8 EA)												
		Power Fixture												
1263		Switch	EA	8	0%	8	\$ 9.32	\$ 74.56	0.200	\$ 64.00	\$ 12.80	\$ 102.40	\$	177
1264		TV Outlet	EA	8	0%	8	\$ 35.62	\$ 284.96	0.400	\$ 64.00	\$ 25.60	\$ 204.80	\$	490
1265		Duplex Receptacle	EA	24	0%	24	\$ 28.65	\$ 687.60	0.325	\$ 64.00	\$ 20.80	\$ 499.20	\$	1,187
1266		WP GFCI Duplex Receptacle	EA	16	0%	16	\$ 29.37	\$ 469.84	0.298	\$ 64.00	\$ 19.07	\$ 305.15	\$	775
		Lighting Fixture												
1267		Ceiling Fan	EA	8	0%	8	\$ 285.00	\$ 2,280.00	0.758	\$ 64.00	\$ 48.51	\$ 388.10	\$	2,668
1268		Tele/Data Outlet	EA	8	0%	8	\$ 35.62	\$ 284.96	0.400	\$ 64.00	\$ 25.60	\$ 204.80	\$	490
1269		Wall Socket Light	EA	8	0%	8	\$ 320.63	\$ 2,565.04	0.820	\$ 64.00	\$ 52.48	\$ 419.84	\$	2,985
		Unit E2b-1												
		Power Fixture												
1270		Switch	EA	1	0%	1	\$ 9.32	\$ 9.32	0.200	\$ 64.00	\$ 12.80	\$ 12.80	\$	22
1271		TV Outlet	EA	1	0%	1	\$ 35.62	\$ 35.62	0.400	\$ 64.00	\$ 25.60	\$ 25.60	\$	61
1272		Tele/Data Outlet	EA	1	0%	1	\$ 35.62	\$ 35.62	0.400	\$ 64.00	\$ 25.60	\$ 25.60	\$	61
1273		Duplex Receptacle	EA	3	0%	3	\$ 28.65	\$ 85.95	0.325	\$ 64.00	\$ 20.80	\$ 62.40	\$	148
1274		WP GFCI Duplex Receptacle	EA	2	0%	2	\$ 29.37	\$ 58.73	0.298	\$ 64.00	\$ 19.07	\$ 38.14	\$	97
		Lighting Fixture												

Veracity Estimating

Project ID: *****
Location: *****
Scope of Work: Electrical
Date: *****



Table with columns: Item #, Ref. Sheet #, Item Description, Unit, Quantity, Wastage, Quantity w/ Wastage, Unit Material Cost, Total Material Cost, Unit Manhour, Hourly Wage, Unit Labor Cost, Total Labor Cost, Sub Cost, Total Trade Cost. Rows include items like Ceiling Fan, Wall Socket Light, Switch, Duplex Receptacle, etc.

Project ID: *****
 Location: *****
 Scope of Work: Electrical
 Date: *****



Construction Estimation Services

Item #	Ref. Sheet #	Item Description	Unit	Quantity	Wastage	Quantity w/ Wastage	Unit Material Cost	Total Material Cost	Unit Manhour	Hourly Wage	Unit Labor Cost	Total Labor Cost	Sub Cost	Total Trade Cost
1398		Duplex Receptacle	EA	4	0%	4	\$ 28.65	\$ 114.60	0.325	\$ 64.00	\$ 20.80	\$ 83.20	\$ 198	
		Lighting Fixture												
1399		Ceiling Fan	EA	1	0%	1	\$ 285.00	\$ 285.00	0.758	\$ 64.00	\$ 48.51	\$ 48.51	\$ 334	
		Unit E2g												
		Power Fixture												
1400		Switch	EA	1	0%	1	\$ 9.32	\$ 9.32	0.200	\$ 64.00	\$ 12.80	\$ 12.80	\$ 22	
1401		Duplex Receptacle	EA	2	0%	2	\$ 28.65	\$ 57.30	0.325	\$ 64.00	\$ 20.80	\$ 41.60	\$ 99	
1402		WP GFCI Duplex Receptacle	EA	1	0%	1	\$ 29.37	\$ 29.37	0.298	\$ 64.00	\$ 19.07	\$ 19.07	\$ 48	
		Lighting Fixture												
1403		Ceiling Fan	EA	1	0%	1	\$ 285.00	\$ 285.00	0.758	\$ 64.00	\$ 48.51	\$ 48.51	\$ 334	
1404		Wall Socket Light	EA	1	0%	1	\$ 320.63	\$ 320.63	0.820	\$ 64.00	\$ 52.48	\$ 52.48	\$ 373	
		Unit E2h (5 EA)												
		Power Fixture												
1405		Switch	EA	5	0%	5	\$ 9.32	\$ 46.60	0.200	\$ 64.00	\$ 12.80	\$ 64.00	\$ 111	
1406		TV Outlet	EA	5	0%	5	\$ 35.62	\$ 178.10	0.400	\$ 64.00	\$ 25.60	\$ 128.00	\$ 306	
1407		Tele/Data Outlet	EA	5	0%	5	\$ 35.62	\$ 178.10	0.400	\$ 64.00	\$ 25.60	\$ 128.00	\$ 306	
1408		Duplex Receptacle	EA	15	0%	15	\$ 28.65	\$ 429.75	0.325	\$ 64.00	\$ 20.80	\$ 312.00	\$ 742	
1409		WP GFCI Duplex Receptacle	EA	5	0%	5	\$ 29.37	\$ 146.83	0.298	\$ 64.00	\$ 19.07	\$ 95.36	\$ 242	
		Lighting Fixture												
1410		Ceiling Fan	EA	5	0%	5	\$ 285.00	\$ 1,425.00	0.758	\$ 64.00	\$ 48.51	\$ 242.56	\$ 1,668	
1411		Wall Socket Light	EA	5	0%	5	\$ 320.63	\$ 1,603.15	0.820	\$ 64.00	\$ 52.48	\$ 262.40	\$ 1,866	
		Unit E2h-1												
		Power Fixture												
1412		Switch	EA	1	0%	1	\$ 9.32	\$ 9.32	0.200	\$ 64.00	\$ 12.80	\$ 12.80	\$ 22	
1413		TV Outlet	EA	1	0%	1	\$ 35.62	\$ 35.62	0.400	\$ 64.00	\$ 25.60	\$ 25.60	\$ 61	
1414		Tele/Data Outlet	EA	1	0%	1	\$ 35.62	\$ 35.62	0.400	\$ 64.00	\$ 25.60	\$ 25.60	\$ 61	
1415		Duplex Receptacle	EA	3	0%	3	\$ 28.65	\$ 85.95	0.325	\$ 64.00	\$ 20.80	\$ 62.40	\$ 148	
1416		WP GFCI Duplex Receptacle	EA	1	0%	1	\$ 29.37	\$ 29.37	0.298	\$ 64.00	\$ 19.07	\$ 19.07	\$ 48	
		Lighting Fixture												
1417		Ceiling Fan	EA	1	0%	1	\$ 285.00	\$ 285.00	0.758	\$ 64.00	\$ 48.51	\$ 48.51	\$ 334	
1418		Wall Socket Light	EA	1	0%	1	\$ 320.63	\$ 320.63	0.820	\$ 64.00	\$ 52.48	\$ 52.48	\$ 373	
		Unit E2h-2												
		Power Fixture												
1419		Switch	EA	1	0%	1	\$ 9.32	\$ 9.32	0.200	\$ 64.00	\$ 12.80	\$ 12.80	\$ 22	
1420		TV Outlet	EA	1	0%	1	\$ 35.62	\$ 35.62	0.400	\$ 64.00	\$ 25.60	\$ 25.60	\$ 61	
1421		Tele/Data Outlet	EA	1	0%	1	\$ 35.62	\$ 35.62	0.400	\$ 64.00	\$ 25.60	\$ 25.60	\$ 61	
1422		Duplex Receptacle	EA	3	0%	3	\$ 28.65	\$ 85.95	0.325	\$ 64.00	\$ 20.80	\$ 62.40	\$ 148	
1423		WP GFCI Duplex Receptacle	EA	1	0%	1	\$ 29.37	\$ 29.37	0.298	\$ 64.00	\$ 19.07	\$ 19.07	\$ 48	
		Lighting Fixture												
1424		Ceiling Fan	EA	1	0%	1	\$ 285.00	\$ 285.00	0.758	\$ 64.00	\$ 48.51	\$ 48.51	\$ 334	
1425		Wall Socket Light	EA	1	0%	1	\$ 320.63	\$ 320.63	0.820	\$ 64.00	\$ 52.48	\$ 52.48	\$ 373	
		Unit E2i												
		Power Fixture												
1426		Switch	EA	1	0%	1	\$ 9.32	\$ 9.32	0.200	\$ 64.00	\$ 12.80	\$ 12.80	\$ 22	
1427		TV Outlet	EA	1	0%	1	\$ 35.62	\$ 35.62	0.400	\$ 64.00	\$ 25.60	\$ 25.60	\$ 61	
1428		Tele/Data Outlet	EA	1	0%	1	\$ 35.62	\$ 35.62	0.400	\$ 64.00	\$ 25.60	\$ 25.60	\$ 61	
1429		Duplex Receptacle	EA	3	0%	3	\$ 28.65	\$ 85.95	0.325	\$ 64.00	\$ 20.80	\$ 62.40	\$ 148	
1430		WP GFCI Duplex Receptacle	EA	1	0%	1	\$ 29.37	\$ 29.37	0.298	\$ 64.00	\$ 19.07	\$ 19.07	\$ 48	
		Lighting Fixture												
1431		Ceiling Fan	EA	1	0%	1	\$ 285.00	\$ 285.00	0.758	\$ 64.00	\$ 48.51	\$ 48.51	\$ 334	
1432		Wall Socket Light	EA	1	0%	1	\$ 320.63	\$ 320.63	0.820	\$ 64.00	\$ 52.48	\$ 52.48	\$ 373	

Building Data Summary

Project ID:	*****
Location:	*****
Scope of Work:	Electrical
Date:	*****



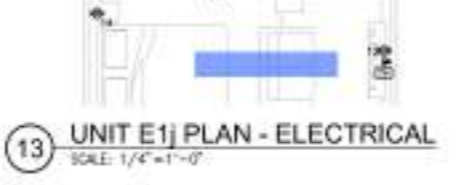
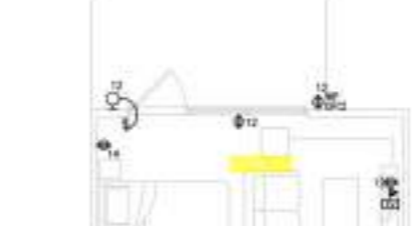
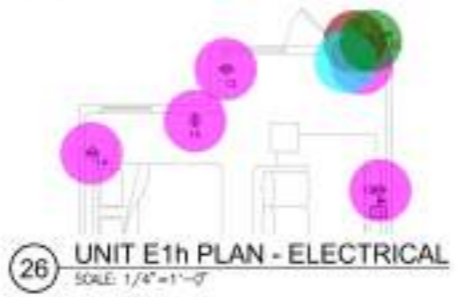
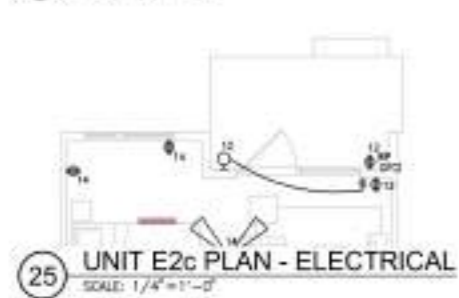
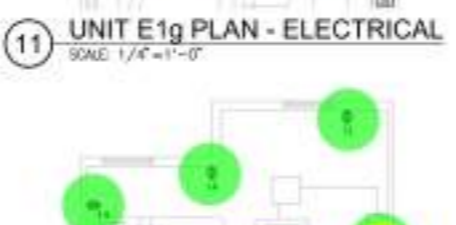
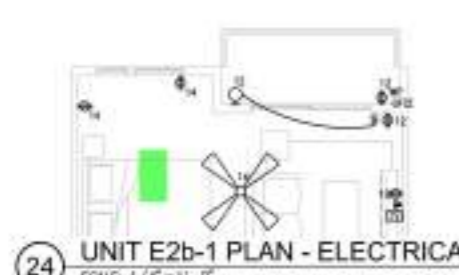
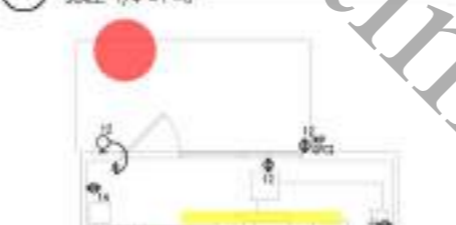
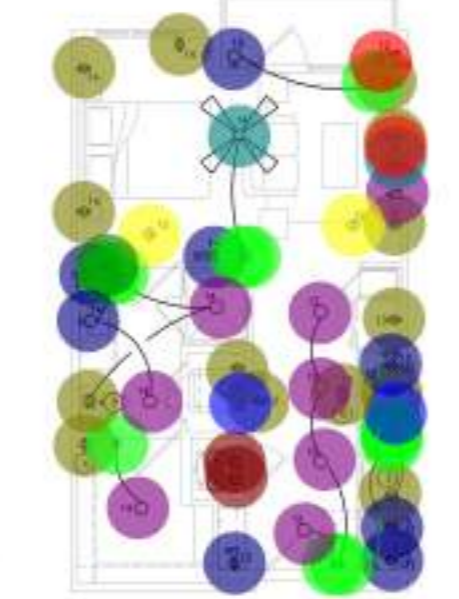
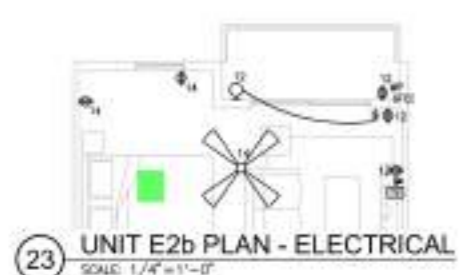
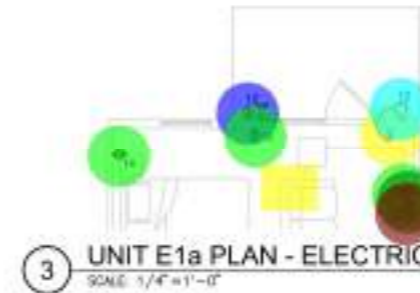
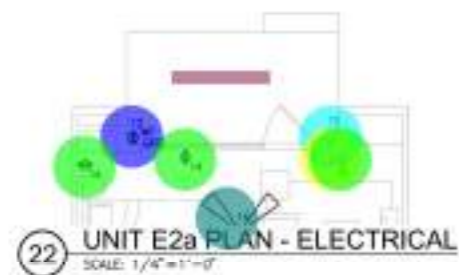
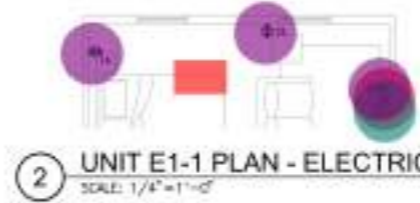
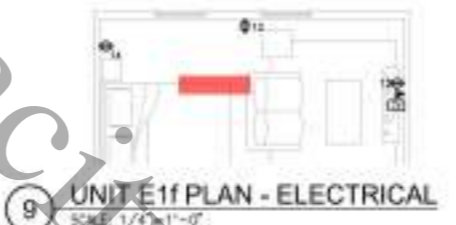
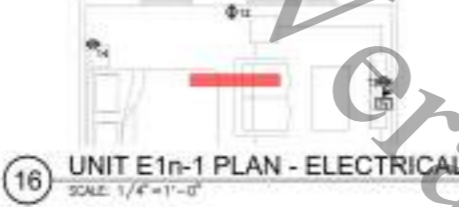
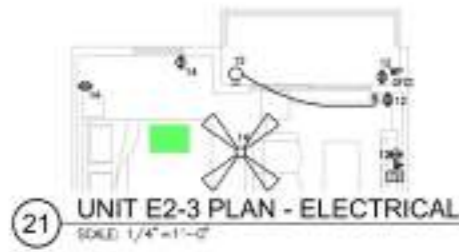
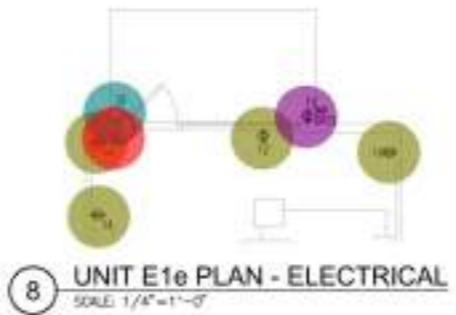
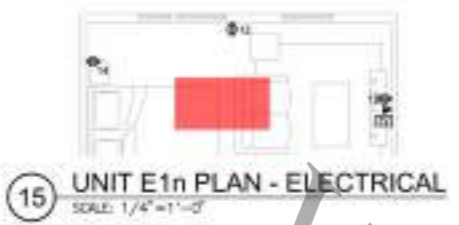
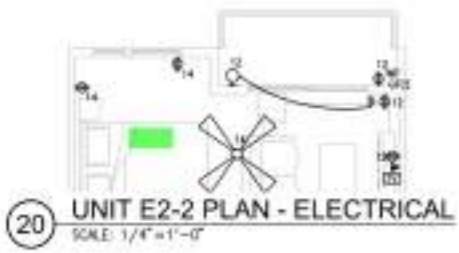
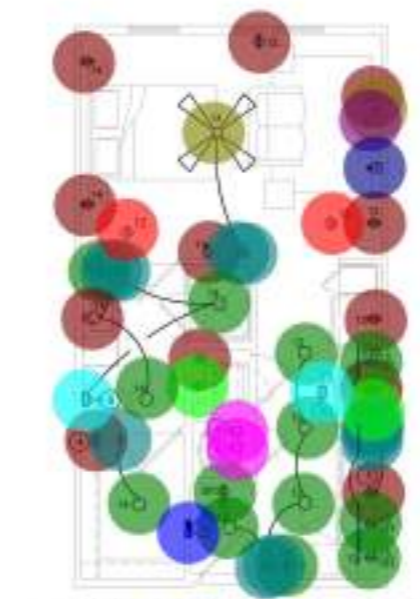
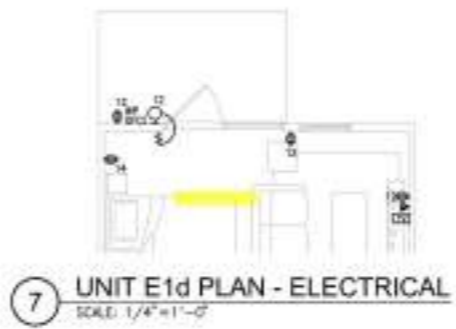
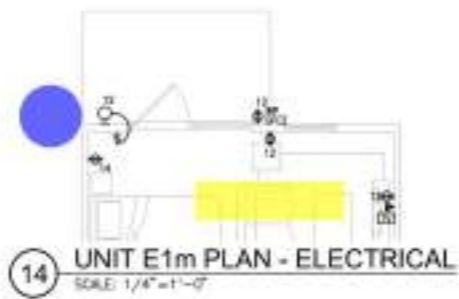
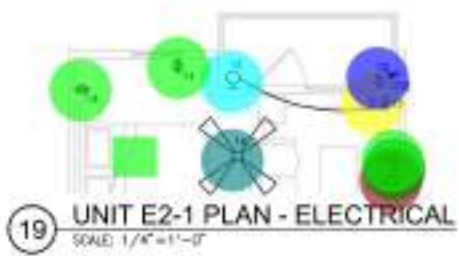
Construction Estimation Services

Item #	Ref. Sheet #	Item Description	Unit	Quantity	Wastage	Quantity w/ Wastage	Unit Material Cost	Total Material Cost	Unit Manhour	Hourly Wage	Unit Labor Cost	Total Labor Cost	Sub Cost	Total Trade Cost
Unit E2i-1														
Power Fixture														
1433		Switch	EA	1	0%	1	\$ 9.32	\$ 9.32	0.200	\$ 64.00	\$ 12.80	\$ 12.80	\$	22
1434		TV Outlet	EA	1	0%	1	\$ 35.62	\$ 35.62	0.400	\$ 64.00	\$ 25.60	\$ 25.60	\$	61
1435		Tele/Data Outlet	EA	1	0%	1	\$ 35.62	\$ 35.62	0.400	\$ 64.00	\$ 25.60	\$ 25.60	\$	61
1436		Duplex Receptacle	EA	3	0%	3	\$ 28.65	\$ 85.95	0.325	\$ 64.00	\$ 20.80	\$ 62.40	\$	148
1437		WP GFCI Duplex Receptacle	EA	1	0%	1	\$ 29.37	\$ 29.37	0.298	\$ 64.00	\$ 19.07	\$ 19.07	\$	48
Lighting Fixture														
1438		Ceiling Fan	EA	1	0%	1	\$ 285.00	\$ 285.00	0.758	\$ 64.00	\$ 48.51	\$ 48.51	\$	334
1439		Wall Socket Light	EA	1	0%	1	\$ 320.63	\$ 320.63	0.820	\$ 64.00	\$ 52.48	\$ 52.48	\$	373
Power Fixture														
1440		Switch	EA	2	0%	2	\$ 9.32	\$ 18.64	0.200	\$ 64.00	\$ 12.80	\$ 25.60	\$	44
1441		TV Outlet	EA	2	0%	2	\$ 35.62	\$ 71.24	0.400	\$ 64.00	\$ 25.60	\$ 51.20	\$	122
1442		Tele/Data Outlet	EA	2	0%	2	\$ 35.62	\$ 71.24	0.400	\$ 64.00	\$ 25.60	\$ 51.20	\$	122
1443		Duplex Receptacle	EA	6	0%	6	\$ 28.65	\$ 171.90	0.325	\$ 64.00	\$ 20.80	\$ 124.80	\$	297
1444		WP GFCI Duplex Receptacle	EA	2	0%	2	\$ 29.37	\$ 58.73	0.298	\$ 64.00	\$ 19.07	\$ 38.14	\$	97
Lighting Fixture														
1445		Ceiling Fan	EA	2	0%	2	\$ 285.00	\$ 570.00	0.758	\$ 64.00	\$ 48.51	\$ 97.02	\$	667
1446		Wall Socket Light	EA	2	0%	2	\$ 320.63	\$ 641.26	0.820	\$ 64.00	\$ 52.48	\$ 104.96	\$	746
Allowances														
Level 1														
1447		Allowance For Conduits And Wiring	SF	117634	5%	123516	\$ -	\$ -	0.000	\$ 70.00	\$ -	\$ -	\$	4,500
Level 2														
1448		Allowance For Conduits And Wiring	SF	111943	5%	117540	\$ -	\$ -	0.000	\$ 70.00	\$ -	\$ -	\$	4,500
Level 3														
1449		Allowance For Conduits And Wiring	SF	111843	5%	117435	\$ -	\$ -	0.000	\$ 70.00	\$ -	\$ -	\$	4,500
Level 4														
1450		Allowance For Conduits And Wiring	SF	111743	5%	117330	\$ -	\$ -	0.000	\$ 70.00	\$ -	\$ -	\$	4,500
Level 5														
1451		Allowance For Conduits And Wiring	SF	111743	5%	117330	\$ -	\$ -	0.000	\$ 70.00	\$ -	\$ -	\$	4,500
Subtotal (Finishes)							\$ 1,488,021			\$ 472,653		\$ 1,983,174		

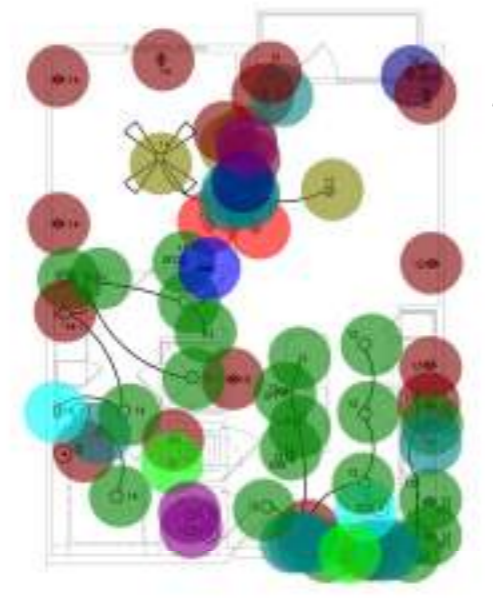
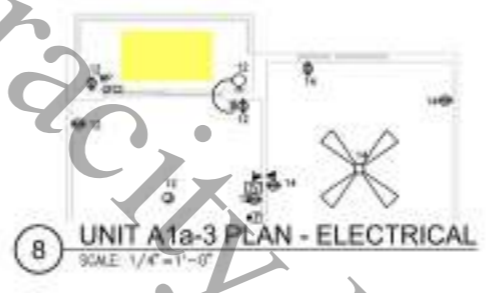
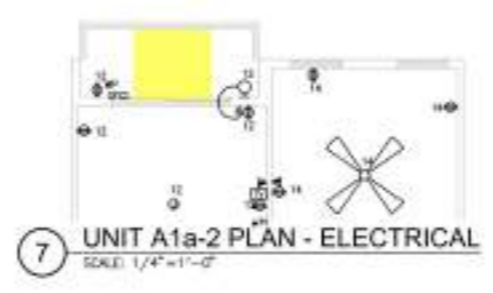
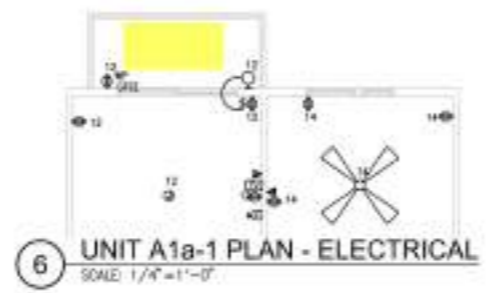
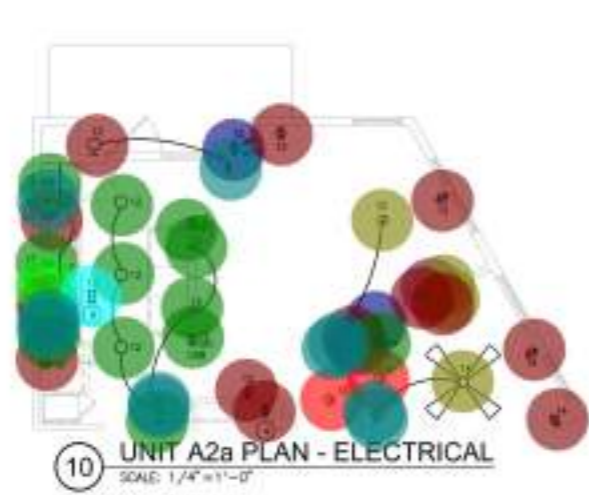
PROJECTED COST	\$	1,983,174
INSURANCE	2%	\$ 39,663
CONTINGENCY	2%	\$ 39,663
OVERHEAD AND PROFIT	5%	\$ 99,159
INCREASE IN MATERIAL PRICE	0%	\$ -
TAX	0%	\$ -
SUGGESTED BID	\$	2,161,660

Note:
 1. Please verify the equipment's and their prices with owner.
 2. Online sources are used for pricing.
 3. Prices can vary depending upon field conditions.

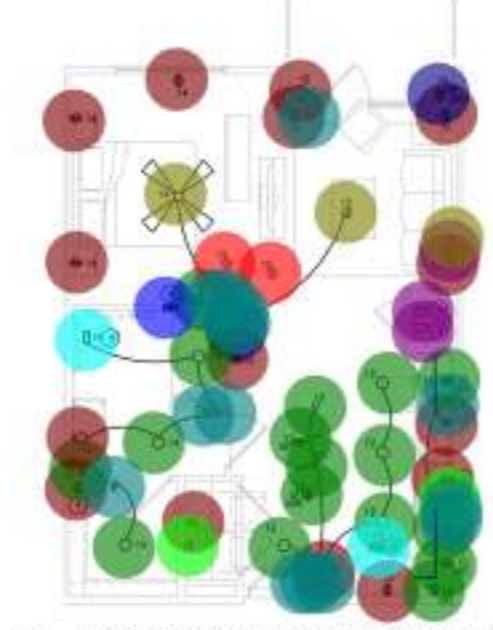
Veracity Estimating



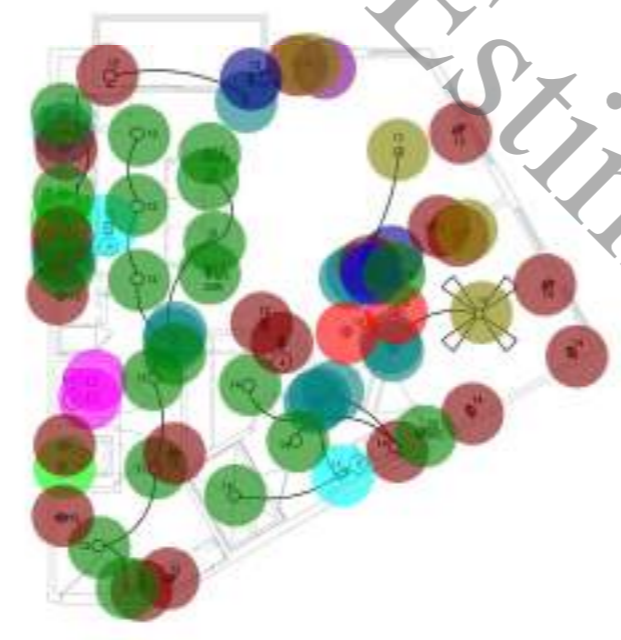
11.0	Duplex Receptacle	11.0	HOLLAND
1.0	Tele/Data Outlet	1.0	HOLLAND
6.0	GFI Duplex Receptacle	1.0	HOLLAND
1.0	TV Outlet	1.0	HOLLAND
1.0	Fire Alarm Combo-Audio/Visual	1.0	HOLLAND
1.0	Switch	1.0	HOLLAND
10.0	Special Outlet	1.0	HOLLAND
2.0	Wall Socket Light	1.0	HOLLAND
2.0	Smoke Detector	1.0	HOLLAND
2.0	Non-Fused Disconnect Switch	1.0	HOLLAND
1.0	Ceiling Fan	1.0	HOLLAND
6.2 FT	Under Cabinet Light	1.0	HOLLAND
7.0	Down Light Fixture	1.0	HOLLAND
1.0	Panel Board (208/120 Volt)	1.0	HOLLAND
2.0	Exhaust Fan Connection	1.0	HOLLAND
5.0	Duplex Receptacle	1.0	HOLLAND
1.0	Wall Socket Light	1.0	HOLLAND
1.0	Switch	1.0	HOLLAND
1.0	WP GFCI Duplex Receptacle	1.0	HOLLAND
1.0	Duplex Receptacle	1.0	HOLLAND
12.0	GFI Duplex Receptacle	1.0	HOLLAND
6.0	Fire Alarm Combo-Audio/Visual	1.0	HOLLAND
1.0	TV Outlet	1.0	HOLLAND
1.0	Tele/Data Outlet	1.0	HOLLAND
1.0	Switch	1.0	HOLLAND
11.0	Smoke Detector	1.0	HOLLAND
2.0	Special Outlet	1.0	HOLLAND
2.0	Non-Fused Disconnect Switch	1.0	HOLLAND
2.0	Panel Board (208/120 Volt)	1.0	HOLLAND
2.0	Exhaust Fan Connection	1.0	HOLLAND
2.0	Wall Socket Light	1.0	HOLLAND
7.0	Down Light Fixture	1.0	HOLLAND
2.0	WP GFCI Duplex Receptacle	1.0	HOLLAND
1.0	Ceiling Fan	1.0	HOLLAND
6.3 FT	Under Cabinet Light	1.0	HOLLAND
1.0	Ceiling Fan	1.0	HOLLAND
1.0	Wall Socket Light	1.0	HOLLAND
1.0	Switch	1.0	HOLLAND
1.0	WP GFCI Duplex Receptacle	1.0	HOLLAND
1.0	Duplex Receptacle	1.0	HOLLAND
3.0	Ceiling Fan	1.0	HOLLAND
1.0	TV Outlet	1.0	HOLLAND
1.0	Tele/Data Outlet	1.0	HOLLAND
1.0	Wall Socket Light	1.0	HOLLAND
1.0	Switch	1.0	HOLLAND
2.0	WP GFCI Duplex Receptacle	1.0	HOLLAND
3.0	Duplex Receptacle	1.0	HOLLAND
4.0	Duplex Receptacle	1.0	HOLLAND
4.0	Tv Outlet	1.0	HOLLAND
1.0	Tele/Data Outlet	1.0	HOLLAND
4.0	Duplex Receptacle	1.0	HOLLAND
1.0	WP GFCI Duplex Receptacle	1.0	HOLLAND
1.0	Wall Socket Light	1.0	HOLLAND
1.0	Switch	1.0	HOLLAND
1.0	WP GFCI Duplex Receptacle	1.0	HOLLAND
1.0	Switch	1.0	HOLLAND
3.0	Duplex Receptacle	1.0	HOLLAND
1.0	Wall Socket Light	1.0	HOLLAND
1.0	Tele/Data Outlet	1.0	HOLLAND
1.0	TV Outlet	1.0	HOLLAND
1.0	Tele/Data Outlet	1.0	HOLLAND
1.0	TV Outlet	1.0	HOLLAND
3.0	Duplex Receptacle	1.0	HOLLAND



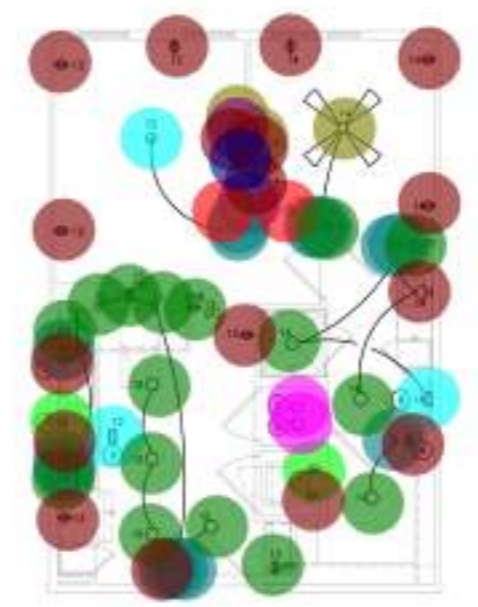
11 UNIT A3 PLAN - ELECTRICAL
SCALE: 1/4"=1'-0"



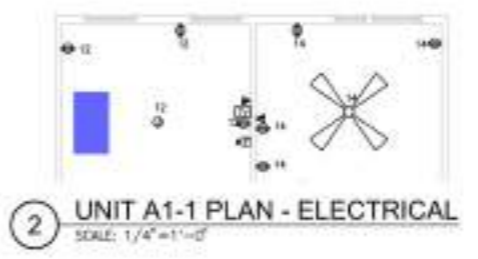
12 UNIT A3-ANSI PLAN - ELECTRICAL
SCALE: 1/4"=1'-0"



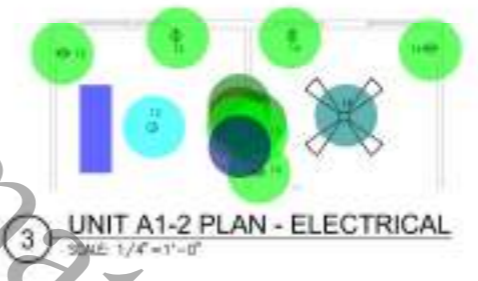
9 UNIT A2 PLAN - ELECTRICAL
SCALE: 1/4"=1'-0"



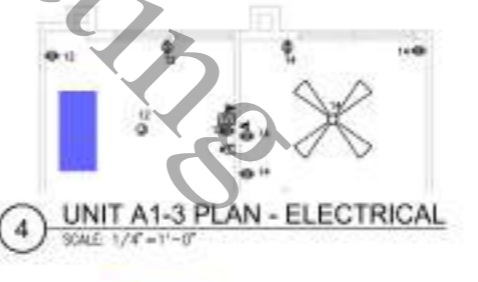
1 UNIT A1 PLAN - ELECTRICAL
SCALE: 1/4"=1'-0"



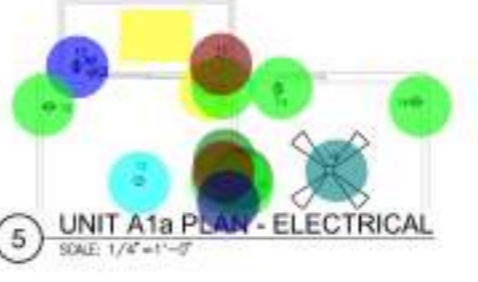
2 UNIT A1-1 PLAN - ELECTRICAL
SCALE: 1/4"=1'-0"



3 UNIT A1-2 PLAN - ELECTRICAL
SCALE: 1/4"=1'-0"



4 UNIT A1-3 PLAN - ELECTRICAL
SCALE: 1/4"=1'-0"



5 UNIT A1a PLAN - ELECTRICAL
SCALE: 1/4"=1'-0"

- GENERAL NOTES:**
- A. APPOINT ELECTRICAL DEVICES SHALL BE PLACED AS FOLLOWS UNLESS CONTRACTOR TO VERIFY MOUNTING HEIGHTS WITH ARCHITECT/INTERIOR DECORATOR.
 - B. DEVICE PLUS THE MOUNTING HEIGHT AS NOTED.
 - C. EACH APARTMENT SHALL HAVE SMOKE DETECTOR PER UNIT.
 - D. ALL SMOKE DETECTORS SHALL BE PLACED AS NOTED.
 - E. REFER TO THE MOUNTING HEIGHTS AS NOTED.
 - F. ALL FEEDERS SHALL BE PLACED AS NOTED.
 - G. REFER TO THE MOUNTING HEIGHTS AS NOTED.
 - H. USE 1/2" DIA. RIGID CONDUIT UNLESS OTHERWISE NOTED.
 - I. ALL BRANCH CIRCUITS SHALL BE PROTECTED BY CIRCUIT BREAKERS.
 - J. REFER TO THE MOUNTING HEIGHTS AS NOTED.
 - K. PROVIDE 1/2" DIA. RIGID CONDUIT FOR ALL FEEDERS AND BRANCHES.
 - L. PROVIDE 1/2" DIA. RIGID CONDUIT FOR ALL FEEDERS AND BRANCHES.
 - M. ALL RECEPTACLES SHALL BE LOCATED AS NOTED.
- NOTES BY DATE:**
- 1. 4/24/2024
 - 2. 4/24/2024
 - 3. 4/24/2024
 - 4. 4/24/2024
 - 5. 4/24/2024
 - 6. 4/24/2024
 - 7. 4/24/2024
 - 8. 4/24/2024
 - 9. 4/24/2024
 - 10. 4/24/2024
 - 11. 4/24/2024
 - 12. 4/24/2024
- Duplex Receptacle
 - Junction Box
 - GFI Duplex Receptacle
 - Wall Socket Light
 - Fire Alarm Combo-Audio/Visual
 - Special Outlet
 - Ceiling Fan
 - Smoke Detector
 - Down Light Fixture
 - Panel Board (208/120 Volt)
 - Exhaust Fan Connection
 - TV Outlet
 - Switch
 - WP GFCI Duplex Receptacle
 - Non-Fused Disconnect Switch
 - Under Cabinet Light
 - Tele/Data Outlet
 - Tele/Data Outlet
 - WP GFCI Duplex Receptacle
 - Under Cabinet Light
 - Smoke Detector
 - Duplex Receptacle
 - GFI Duplex Receptacle
 - Ceiling Fan
 - Switch
 - Fire Alarm Combo-Audio/Visual
 - Exhaust Fan Connection
 - Down Light Fixture
 - Wall Socket Light
 - Special Outlet
 - TV Outlet
 - Non-Fused Disconnect Switch
 - Three Pole Switch
 - Junction Box
 - Panel Board (208/120 Volt)
 - Panel Board (208/120 Volt)
 - TV Outlet
 - Junction Box
 - Tele/Data Outlet
 - Down Light Fixture
 - WP GFCI Duplex Receptacle
 - Three Pole Switch
 - Fire Alarm Combo-Audio/Visual
 - Duplex Receptacle
 - Smoke Detector
 - GFI Duplex Receptacle
 - Wall Socket Light
 - Special Outlet
 - Under Cabinet Light
 - Exhaust Fan Connection
 - Switch
 - Ceiling Fan
 - Wall Socket Light
 - Under Cabinet Light
 - Switch
 - Non-Fused Disconnect Switch
 - Exhaust Fan Connection
 - Down Light Fixture
 - Ceiling Fan
 - Special Outlet
 - Smoke Detector
 - Fire Alarm Combo-Audio/Visual
 - Duplex Receptacle
 - Panel Board (208/120 Volt)
 - Junction Box
 - TV Outlet
 - Tele/Data Outlet
 - Three Pole Switch
 - GFI Duplex Receptacle
 - WP GFCI Duplex Receptacle
 - Switch
 - WP GFCI Duplex Receptacle
 - Tele/Data Outlet
 - Duplex Receptacle
 - Ceiling Fan
 - TV Outlet
 - Junction Box
 - Wall Socket Light
 - Fire Alarm Combo-Audio/Visual
 - TV Outlet
 - Tele/Data Outlet
 - Ceiling Fan
 - Junction Box
 - Duplex Receptacle
 - Fire Alarm Combo-Audio/Visual
 - Panel Board (208/120 Volt)
 - Switch
 - Exhaust Fan Connection
 - Special Outlet
 - Smoke Detector
 - Under Cabinet Light
 - Non-Fused Disconnect Switch
 - Junction Box
 - GFI Duplex Receptacle
 - Tele/Data Outlet
 - Down Light Fixture
 - Wall Socket Light
 - Ceiling Fan
 - TV Outlet
 - Duplex Receptacle
 - Fire Alarm Combo-Audio/Visual

Veracity Estimating

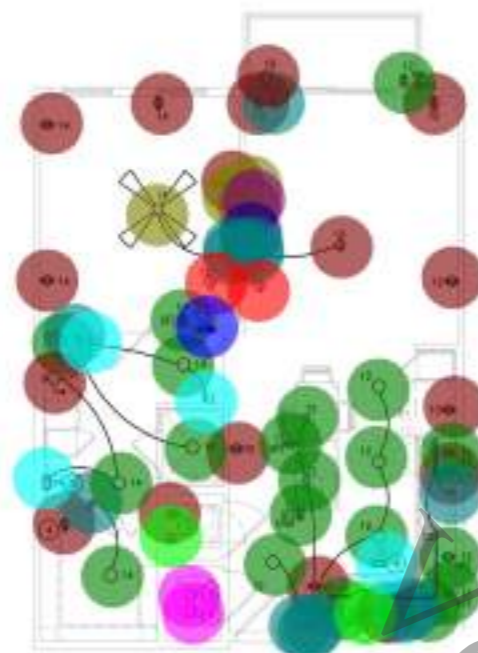
DMA

LAND

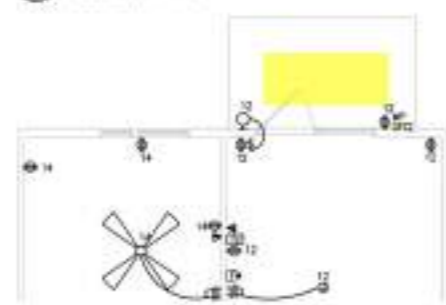
TINGERS

Spring VALLEY

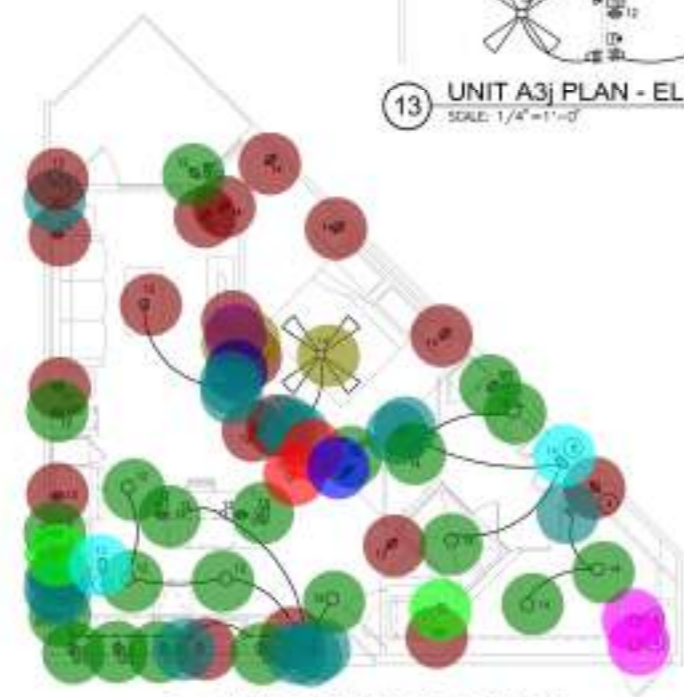
E403



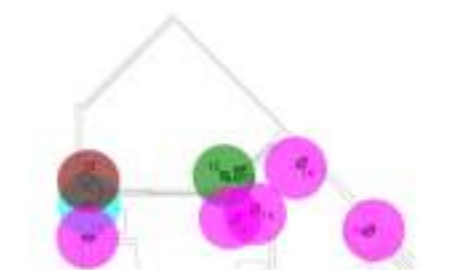
12 UNIT A3-1 PLAN - ELECTRICAL
SCALE: 1/4"=1'-0"



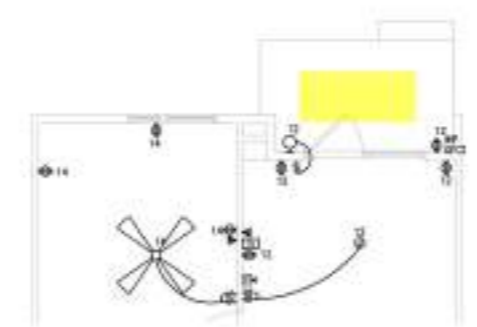
13 UNIT A3j PLAN - ELECTRICAL
SCALE: 1/4"=1'-0"



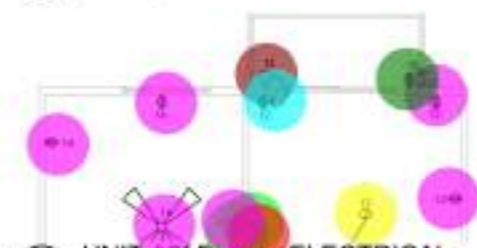
14 UNIT A5 PLAN - ELECTRICAL
SCALE: 1/4"=1'-0"



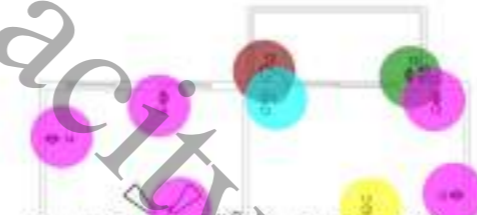
15 UNIT A5-1 PLAN - ELECTRICAL
SCALE: 1/4"=1'-0"



8 UNIT A3e PLAN - ELECTRICAL
SCALE: 1/4"=1'-0"



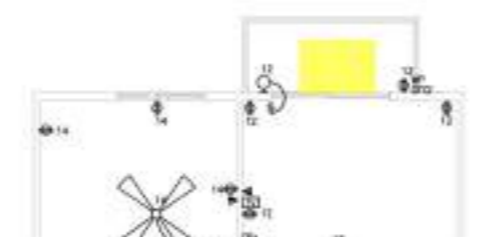
9 UNIT A3i PLAN - ELECTRICAL
SCALE: 1/4"=1'-0"



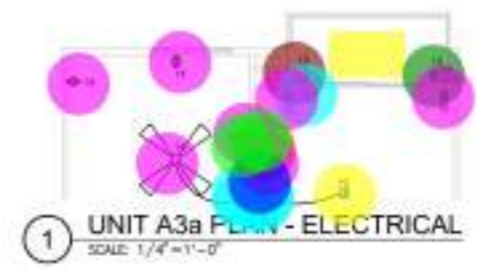
10 UNIT A3g PLAN - ELECTRICAL
SCALE: 1/4"=1'-0"



10 UNIT A3h PLAN - ELECTRICAL
SCALE: 1/4"=1'-0"



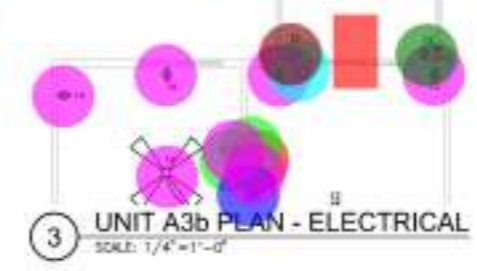
11 UNIT A3i PLAN - ELECTRICAL
SCALE: 1/4"=1'-0"



1 UNIT A3a PLAN - ELECTRICAL
SCALE: 1/4"=1'-0"



2 UNIT A3a-1 PLAN - ELECTRICAL
SCALE: 1/4"=1'-0"



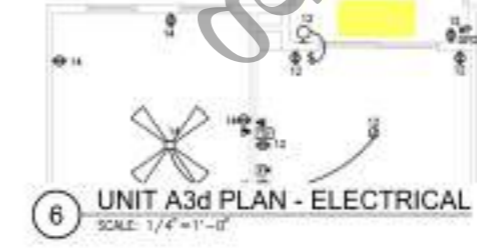
3 UNIT A3b PLAN - ELECTRICAL
SCALE: 1/4"=1'-0"



4 UNIT A3b-1 PLAN - ELECTRICAL
SCALE: 1/4"=1'-0"



5 UNIT A3c PLAN - ELECTRICAL
SCALE: 1/4"=1'-0"



6 UNIT A3d PLAN - ELECTRICAL
SCALE: 1/4"=1'-0"



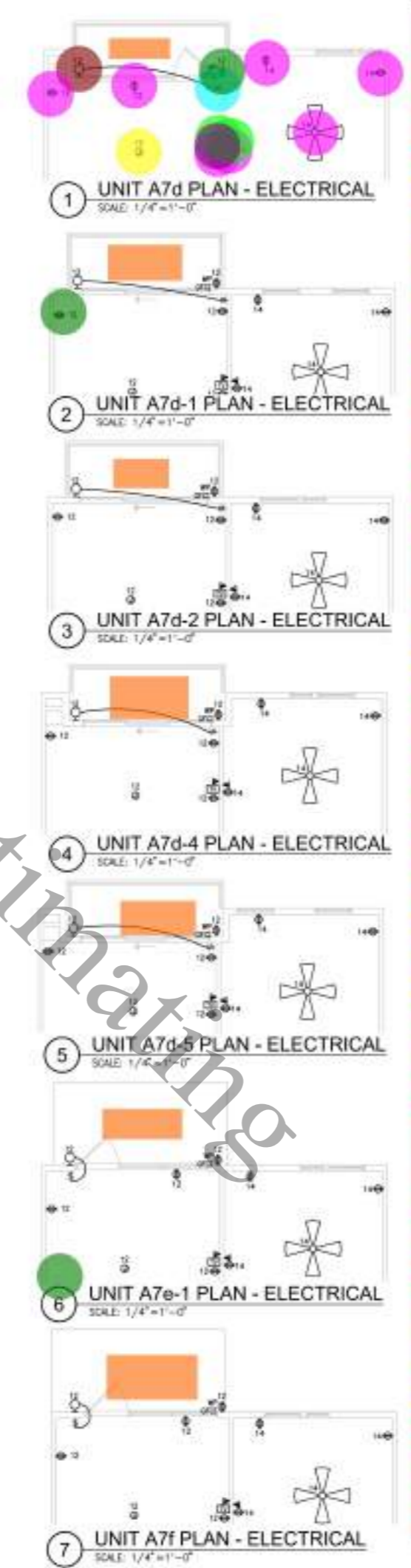
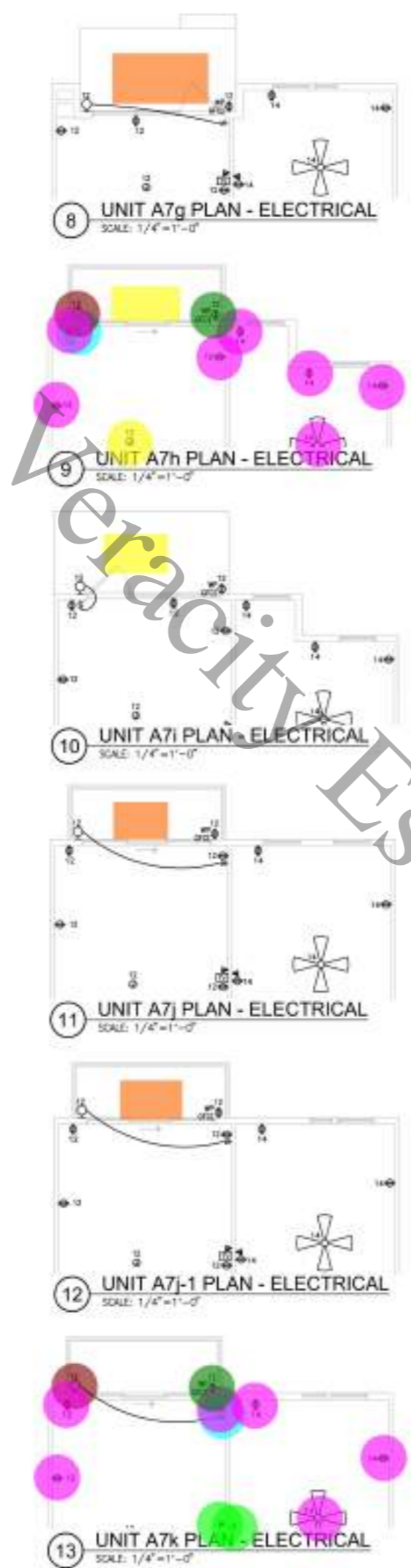
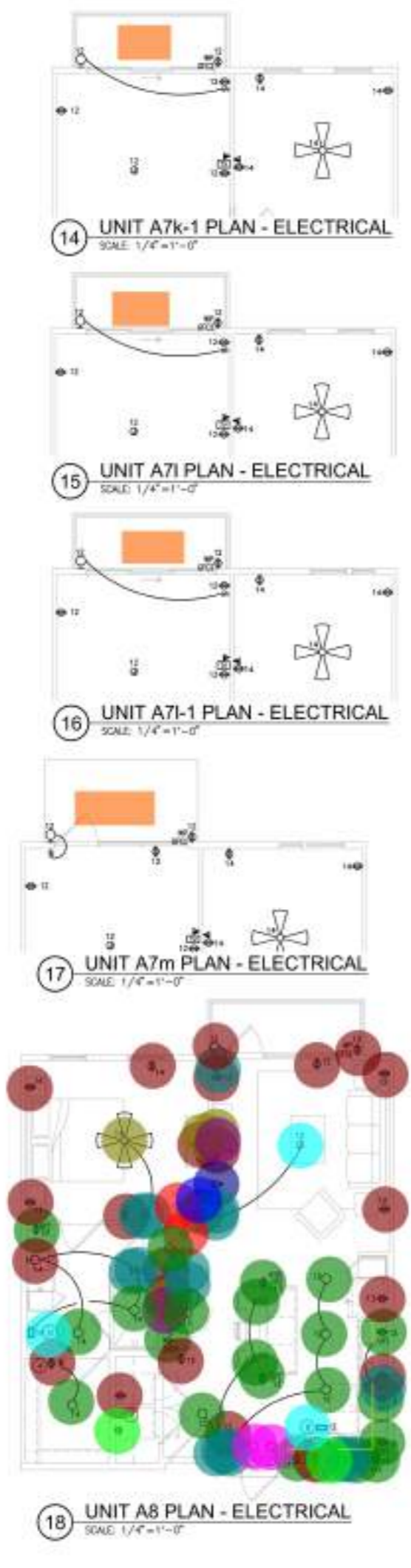
7 UNIT A3d-1 PLAN - ELECTRICAL
SCALE: 1/4"=1'-0"

- GENERAL NOTES
- Switch
 - WP GFCI Duplex Receptacle
 - Wall Socket Light
 - Duplex Receptacle
 - Duplex Receptacle
 - Tele/Data Outlet
 - GFI Duplex Receptacle
 - TV Outlet
 - Fire Alarm Combo-Audio/Visual
 - Switch
 - Special Outlet
 - Wall Socket Light
 - Smoke Detector
 - Non-Fused Disconnect Switch
 - Ceiling Fan
 - Down Light Fixture
 - Panel Board (208/120 Volt)
 - Exhaust Fan Connection
 - WP GFCI Duplex Receptacle
 - Junction Box
 - Duplex Receptacle
 - Tele/Data Outlet
 - GFI Duplex Receptacle
 - TV Outlet
 - Fire Alarm Combo-Audio/Visual
 - Switch
 - Special Outlet
 - Wall Socket Light
 - Smoke Detector
 - Non-Fused Disconnect Switch
 - Ceiling Fan
 - Under Cabinet Light
 - Down Light Fixture
 - Panel Board (208/120 Volt)
 - Exhaust Fan Connection
 - WP GFCI Duplex Receptacle
 - Three Pole Switch
 - Junction Box
 - Junction Box
 - Tele/Data Outlet
 - Duplex Receptacle
 - Wall Socket Light
 - Switch
 - WP GFCI Duplex Receptacle
 - Ceiling Fan
 - Wall Socket Light
 - Junction Box
 - Ceiling Fan
 - WP GFCI Duplex Receptacle
 - Duplex Receptacle
 - Switch
 - Wall Socket Light
 - Switch
 - Junction Box
 - Tele/Data Outlet
 - Ceiling Fan
 - TV Outlet
 - Duplex Receptacle
 - WP GFCI Duplex Receptacle
 - Tele/Data Outlet
 - TV Outlet
 - Duplex Receptacle
 - Wall Socket Light
 - Ceiling Fan
 - WP GFCI Duplex Receptacle
 - Switch
 - TV Outlet
 - Tele/Data Outlet
 - Fire Alarm Combo-Audio/Visual
 - Duplex Receptacle
 - Ceiling Fan
 - WP GFCI Duplex Receptacle
 - Switch
 - Wall Socket Light
 - WP GFCI Duplex Receptacle
 - Wall Socket Light
 - Switch
 - TV Outlet
 - Duplex Receptacle
 - Junction Box
 - Fire Alarm Combo-Audio/Visual
 - Tele/Data Outlet
 - Ceiling Fan

ULHOLLAND
1118 S. MOORE AVENUE
AUSTIN, TX 78704

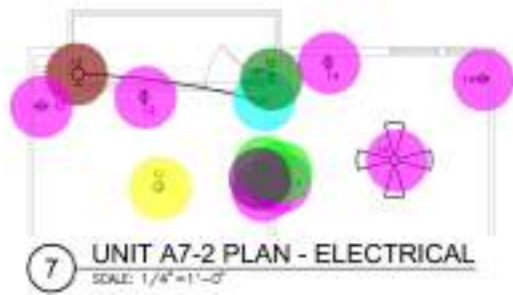
INSULTING ENGINEERS
1118 S. MOORE AVENUE
AUSTIN, TX 78704

SPINNEY & BELL
1118 S. MOORE AVENUE
AUSTIN, TX 78704

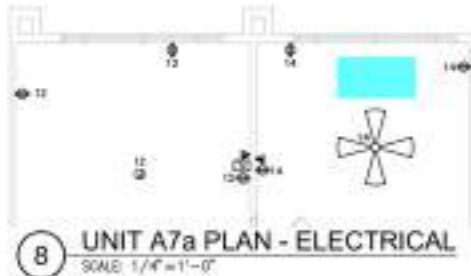


WP GFCI Duplex Recepta...	1.0	●
GFI Duplex Receptacle	11.0	●
Duplex Receptacle	19.0	●
Tele/Data Outlet	3.0	●
Fire Alarm Combo-Audio/...	1.0	●
TV Outlet	2.0	●
Switch	15.0	●
Wall Socket Light	2.0	●
Special Outlet	2.0	●
Smoke Detector	2.0	●
Ceiling Fan	1.0	●
Non-Fused Disconnect S...	2.0	●
Down Light Fixture	11.0	●
Under Cabinet Light	10.1 FT	■
Exhaust Fan Connection	2.0	●
Panel Board (208/120 Volt)	1.0	●
Junction Box	1.0	●
Switch	1.0	●
Wall Socket Light	1.0	●
Duplex Receptacle	5.0	●
Tele/Data Outlet	2.0	●
Ceiling Fan	1.0	●
WP GFCI Duplex Recepta...	2.0	●
Switch	1.0	●
Wall Socket Light	1.0	●
Duplex Receptacle	6.0	●
Junction Box	1.0	●
Ceiling Fan	1.0	●
WP GFCI Duplex Recepta...	2.0	●
Switch	1.0	●
Wall Socket Light	1.0	●
Duplex Receptacle	6.0	●
Tele/Data Outlet	2.0	●
Junction Box	1.0	●
TV Outlet	1.0	●
Ceiling Fan	1.0	●
WP GFCI Duplex Recepta...	1.0	●

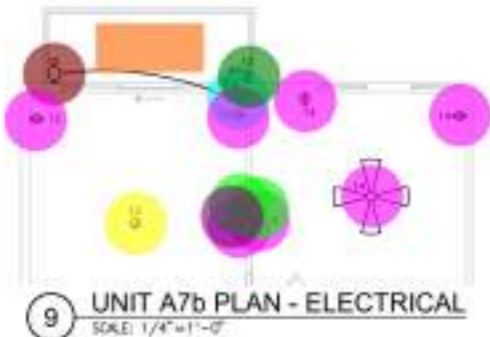
Veracity Estimating



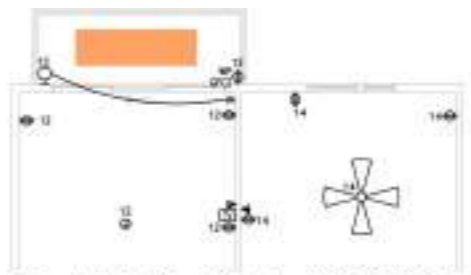
7 UNIT A7-2 PLAN - ELECTRICAL
SCALE: 1/4"=1'-0"



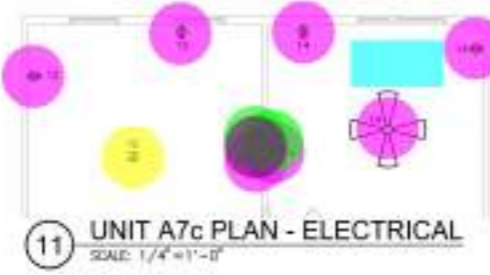
8 UNIT A7a PLAN - ELECTRICAL
SCALE: 1/4"=1'-0"



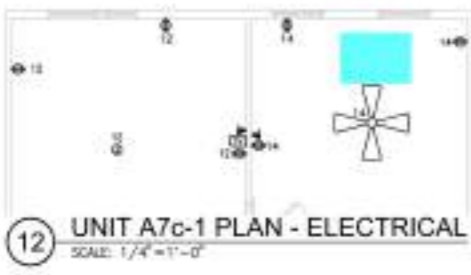
9 UNIT A7b PLAN - ELECTRICAL
SCALE: 1/4"=1'-0"



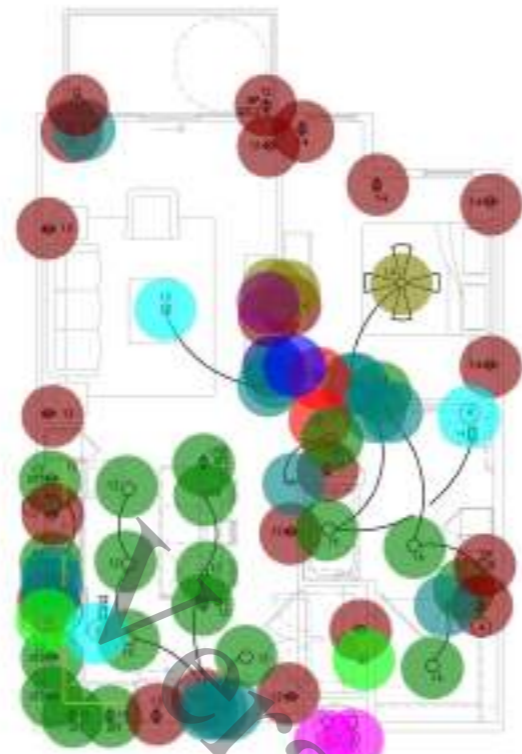
10 UNIT A7b-1 PLAN - ELECTRICAL
SCALE: 1/4"=1'-0"



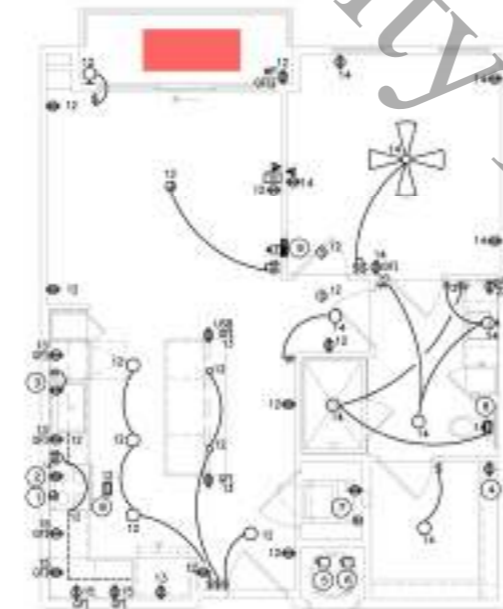
11 UNIT A7c PLAN - ELECTRICAL
SCALE: 1/4"=1'-0"



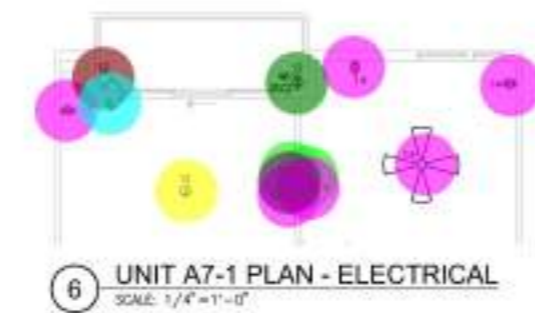
12 UNIT A7c-1 PLAN - ELECTRICAL
SCALE: 1/4"=1'-0"



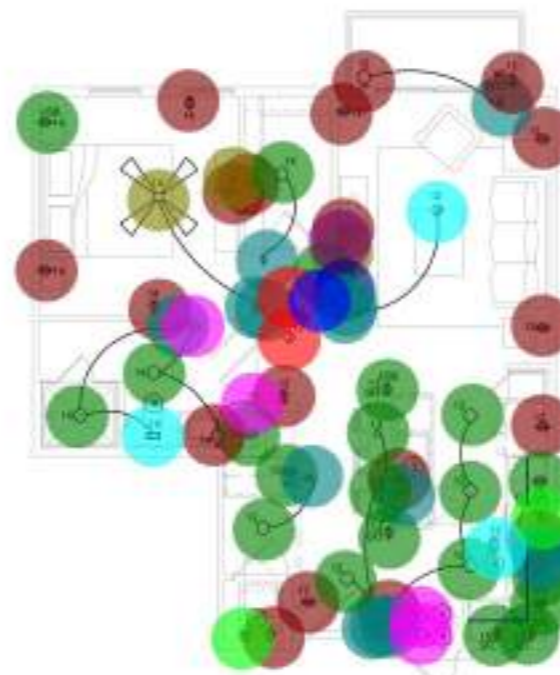
4 UNIT A7a-ANSI PLAN - ELECTRICAL
SCALE: 1/4"=1'-0"



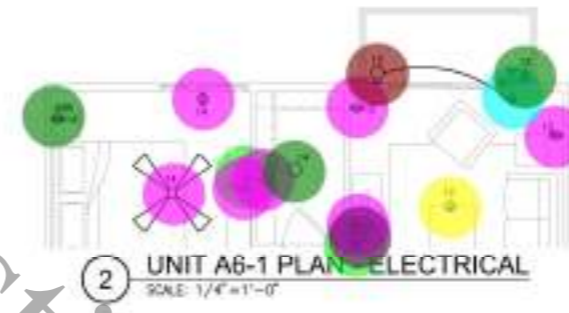
5 UNIT A7 PLAN - ELECTRICAL
SCALE: 1/4"=1'-0"



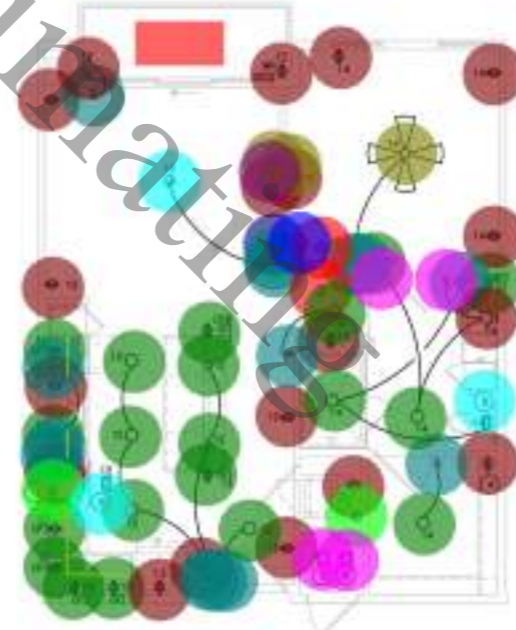
6 UNIT A7-1 PLAN - ELECTRICAL
SCALE: 1/4"=1'-0"



1 UNIT A6 PLAN - ELECTRICAL
SCALE: 1/4"=1'-0"

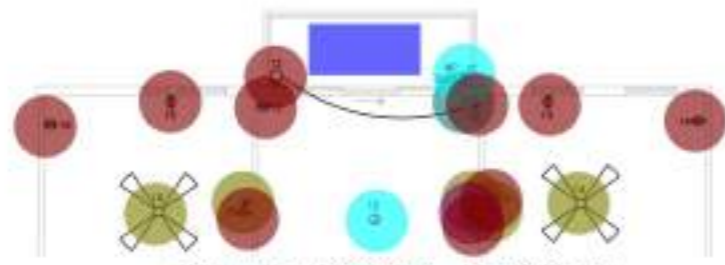


2 UNIT A6-1 PLAN - ELECTRICAL
SCALE: 1/4"=1'-0"



3 UNIT A7-ANSI PLAN - ELECTRICAL
SCALE: 1/4"=1'-0"

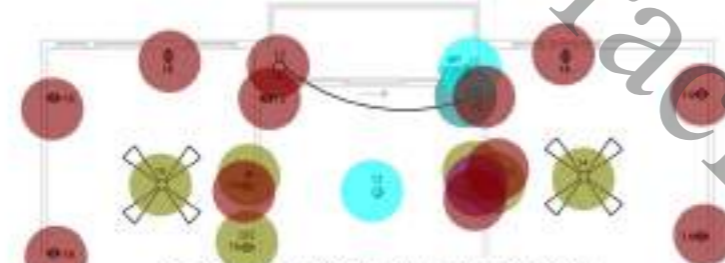
• Switch	1.0	•	•
• Wall Socket Light	1.0	•	•
• Duplex Receptacle	1.0	•	•
• Tele/Data Outlet	1.0	•	•
• Junction Box	1.0	•	•
• TV Outlet	1.0	•	•
• Ceiling Fan	1.0	•	•
• WP GFCI Duplex Receptacle	1.0	•	•
• Duplex Receptacle	1.0	•	•
• Tele/Data Outlet	1.0	•	•
• Junction Box	1.0	•	•
• TV Outlet	1.0	•	•
• Ceiling Fan	1.0	•	•
• Switch	1.0	•	•
• Wall Socket Light	1.0	•	•
• Duplex Receptacle	1.0	•	•
• Tele/Data Outlet	1.0	•	•
• Junction Box	1.0	•	•
• TV Outlet	1.0	•	•
• Ceiling Fan	1.0	•	•
• WP GFCI Duplex Receptacle	1.0	•	•
• Junction Box	1.0	•	•
• Tele/Data Outlet	1.0	•	•
• Duplex Receptacle	1.0	•	•
• Wall Socket Light	1.0	•	•
• Switch	1.0	•	•
• WP GFCI Duplex Receptacle	1.0	•	•
• Ceiling Fan	1.0	•	•
• TV Outlet	1.0	•	•
• WP GFCI Duplex Receptacle	1.0	•	•
• GFI Duplex Receptacle	1.0	•	•
• Duplex Receptacle	1.0	•	•
• Tele/Data Outlet	1.0	•	•
• Fire Alarm Combo-Audio/Visual	1.0	•	•
• TV Outlet	1.0	•	•
• Switch	1.0	•	•
• Wall Socket Light	1.0	•	•
• Special Outlet	1.0	•	•
• Smoke Detector	1.0	•	•
• Ceiling Fan	1.0	•	•
• Non-Fused Disconnect Switch	1.0	•	•
• Down Light Fixture	1.0	•	•
• Under Cabinet Light	1.0	•	•
• Exhaust Fan Connection	1.0	•	•
• Panel Board (208/120 Volt)	1.0	•	•
• Junction Box	1.0	•	•
• WP GFCI Duplex Receptacle	1.0	•	•
• GFI Duplex Receptacle	1.0	•	•
• Duplex Receptacle	1.0	•	•
• Tele/Data Outlet	1.0	•	•
• Fire Alarm Combo-Audio/Visual	1.0	•	•
• TV Outlet	1.0	•	•
• Switch	1.0	•	•
• Wall Socket Light	1.0	•	•
• Special Outlet	1.0	•	•
• Smoke Detector	1.0	•	•
• Ceiling Fan	1.0	•	•
• Non-Fused Disconnect Switch	1.0	•	•
• Down Light Fixture	1.0	•	•
• Under Cabinet Light	1.0	•	•
• Exhaust Fan Connection	1.0	•	•
• Three Pole Switch	1.0	•	•
• Panel Board (208/120 Volt)	1.0	•	•
• Junction Box	1.0	•	•
• Junction Box	1.0	•	•
• Tele/Data Outlet	1.0	•	•
• Duplex Receptacle	1.0	•	•
• Wall Socket Light	1.0	•	•
• Switch	1.0	•	•
• GFI Duplex Receptacle	1.0	•	•
• Ceiling Fan	1.0	•	•
• WP GFCI Duplex Receptacle	1.0	•	•
• Down Light Fixture	1.0	•	•
• TV Outlet	1.0	•	•
• Duplex Receptacle	1.0	•	•
• Tele/Data Outlet	1.0	•	•
• GFI Duplex Receptacle	1.0	•	•
• TV Outlet	1.0	•	•
• Fire Alarm Combo-Audio/Visual	1.0	•	•
• Switch	1.0	•	•
• Special Outlet	1.0	•	•
• Wall Socket Light	1.0	•	•
• Smoke Detector	1.0	•	•
• Non-Fused Disconnect Switch	1.0	•	•
• Ceiling Fan	1.0	•	•
• Under Cabinet Light	1.0	•	•
• Down Light Fixture	1.0	•	•
• Panel Board (208/120 Volt)	1.0	•	•
• Exhaust Fan Connection	1.0	•	•
• Three Pole Switch	1.0	•	•
• Junction Box	1.0	•	•
• WP GFCI Duplex Receptacle	1.0	•	•



4 UNIT B2-1 PLAN - ELECTRICAL
SCALE: 1/4"=1'-0"



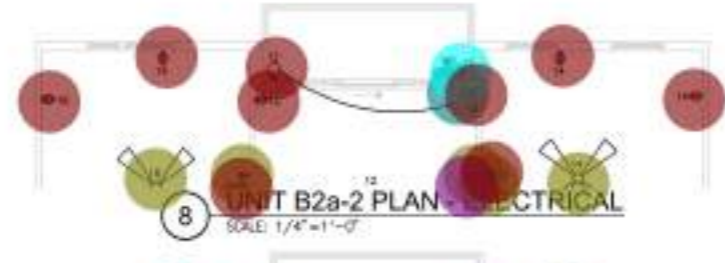
5 UNIT B2-2 PLAN - ELECTRICAL
SCALE: 1/4"=1'-0"



6 UNIT B2a PLAN - ELECTRICAL
SCALE: 1/4"=1'-0"



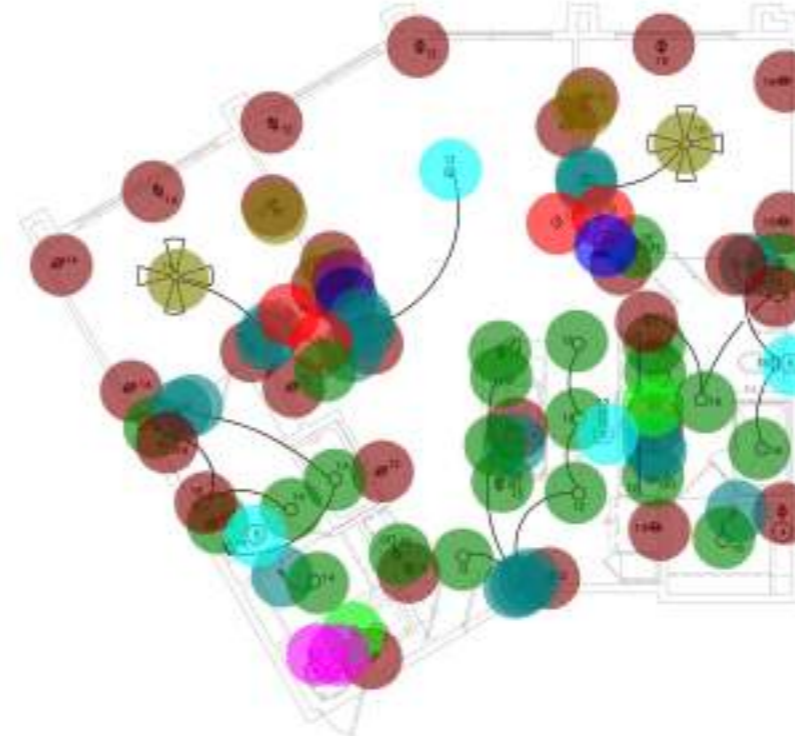
7 UNIT B2a-1 PLAN - ELECTRICAL
SCALE: 1/4"=1'-0"



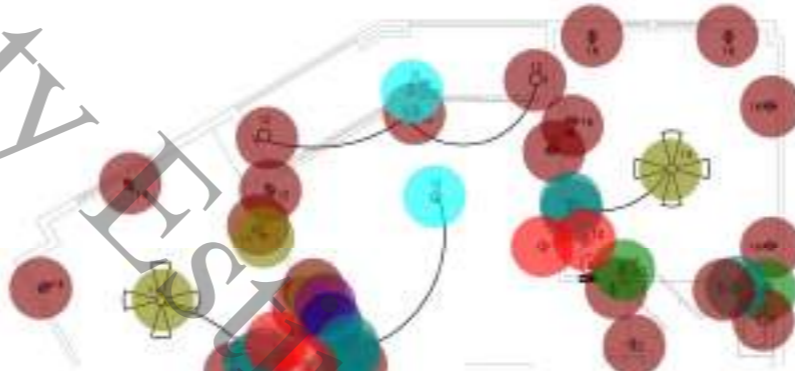
8 UNIT B2a-2 PLAN - ELECTRICAL
SCALE: 1/4"=1'-0"



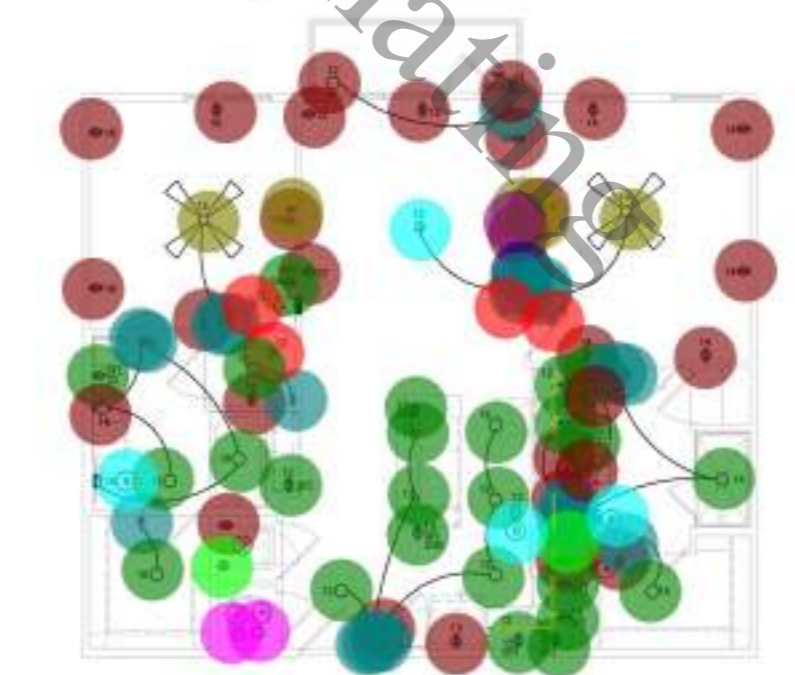
9 UNIT B2a-3 PLAN - ELECTRICAL
SCALE: 1/4"=1'-0"



1 UNIT B1 PLAN - ELECTRICAL
SCALE: 1/4"=1'-0"



2 UNIT B1a PLAN - ELECTRICAL
SCALE: 1/4"=1'-0"



3 UNIT B2 PLAN - ELECTRICAL
SCALE: 1/4"=1'-0"

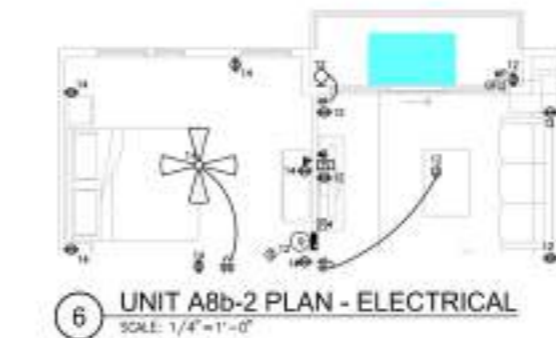
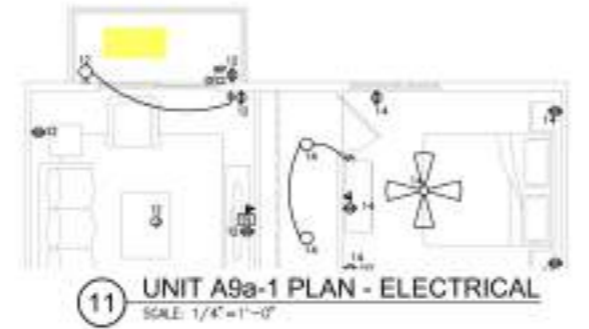
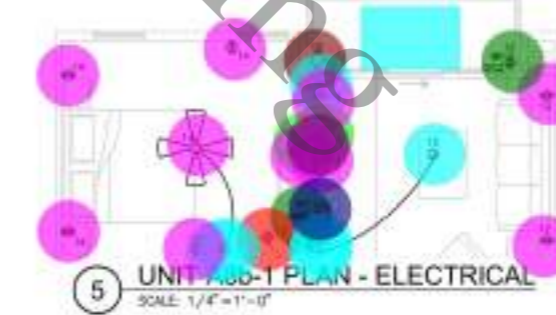
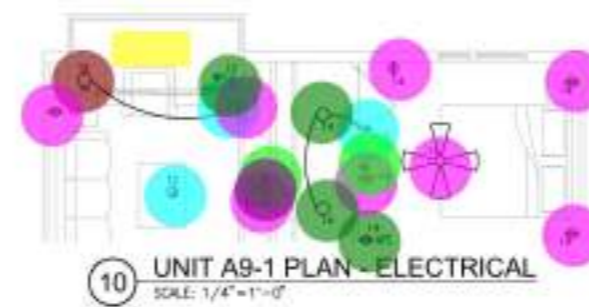
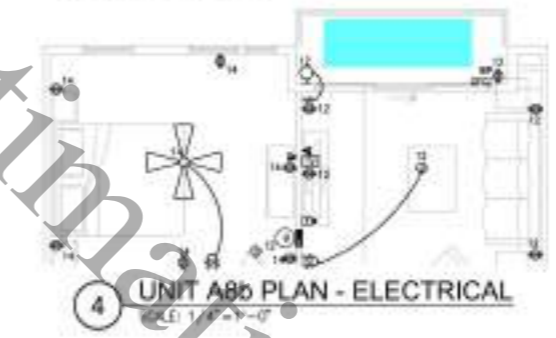
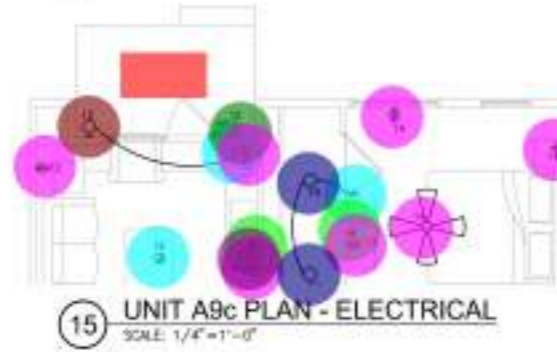
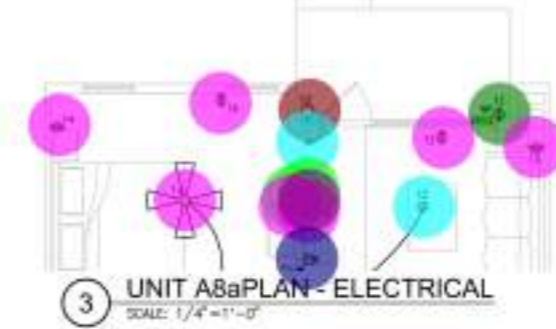
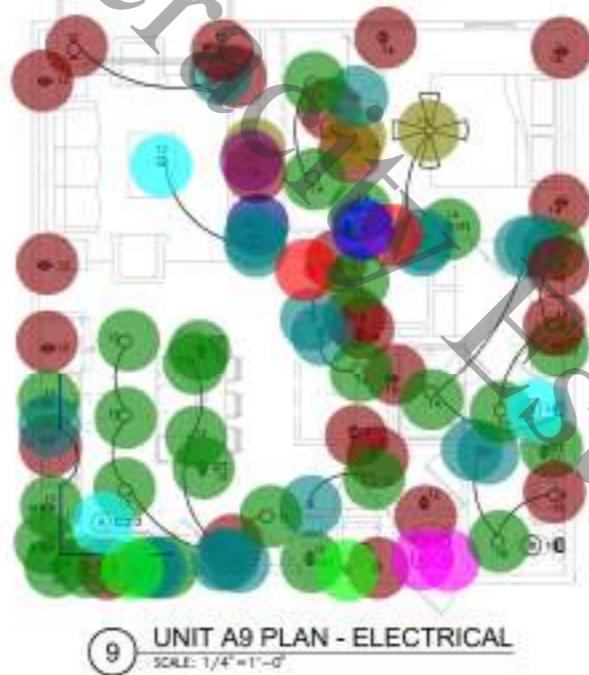
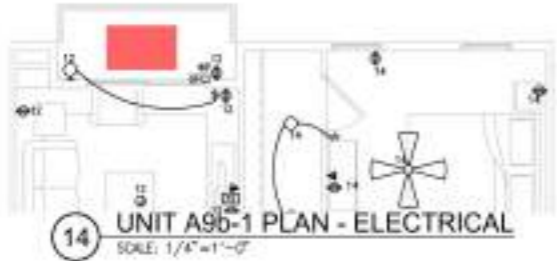
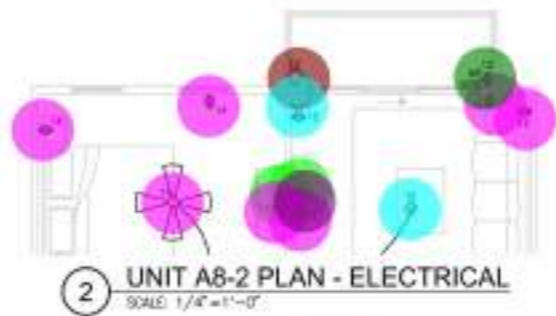
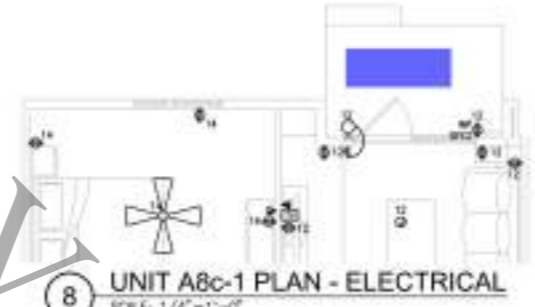
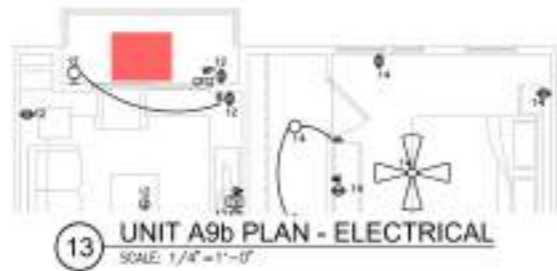
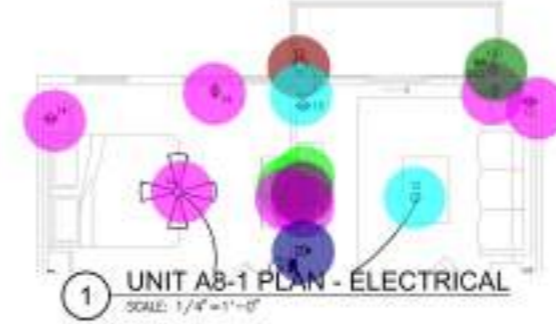
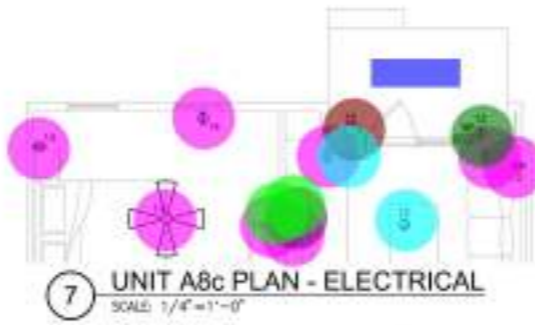
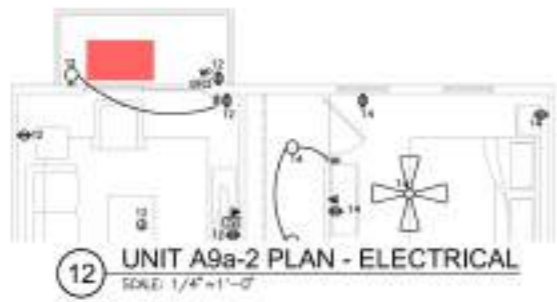
- Tele/Data Outlet 3.0
- TV Outlet 1.0
- Switch 1.0
- Junction Box 1.0
- Ceiling Fan 2.0
- WP GFCI Duplex Receptacle 1.0
- Duplex Receptacle 9.0
- Wall Socket Light 1.0
- Tele/Data Outlet 3.0
- TV Outlet 1.0
- Switch 1.0
- WP GFCI Duplex Receptacle 1.0
- Ceiling Fan 2.0
- Wall Socket Light 1.0
- Duplex Receptacle 1.0
- Tele/Data Outlet 3.0
- TV Outlet 1.0
- Switch 1.0
- Wall Socket Light 1.0
- Ceiling Fan 2.0
- WP GFCI Duplex Receptacle 1.0
- Junction Box 1.0
- GFI Duplex Receptacle 1.0
- Duplex Receptacle 11.0
- Tele/Data Outlet 3.0
- TV Outlet 1.0
- Switch 1.0
- Wall Socket Light 1.0
- Ceiling Fan 2.0
- WP GFCI Duplex Receptacle 1.0
- Junction Box 1.0
- Duplex Receptacle 9.0
- Duplex Receptacle 16.0
- Tele/Data Outlet 2.0
- GFI Duplex Receptacle 2.0
- TV Outlet 1.0
- Fire Alarm Combo-Audio/Visual 1.0
- Wall Socket Light 3.0
- Switch 8.0
- Smoke Detector 4.0
- Ceiling Fan 2.0
- WP GFCI Duplex Receptacle 1.0
- Junction Box 1.0
- Three Pole Switch 2.0
- Duplex Receptacle 24.0
- Tele/Data Outlet 3.0
- GFI Duplex Receptacle 13.0
- TV Outlet 1.0
- Fire Alarm Combo-Audio/Visual 1.0
- Switch 20.0
- Special Outlet 2.0
- Wall Socket Light 4.0
- Smoke Detector 4.0
- Non-Fused Disconnect Switch 2.0
- Ceiling Fan 2.0
- Under Cabinet Light 11.8 FT
- Down Light Fixture 12.0
- Junction Box 1.0
- Exhaust Fan Connection 3.0
- WP GFCI Duplex Receptacle 1.0
- Duplex Receptacle 25.0
- Tele/Data Outlet 3.0
- GFI Duplex Receptacle 10.0
- TV Outlet 1.0
- Fire Alarm Combo-Audio/Visual 1.0
- Switch 18.0
- Special Outlet 2.0
- Wall Socket Light 3.0
- Smoke Detector 4.0
- Non-Fused Disconnect Switch 2.0
- Ceiling Fan 2.0
- Under Cabinet Light 6.2 FT
- Down Light Fixture 13.0
- Panel Board (208/120 Volt) 1.0
- Exhaust Fan Connection 3.0
- Three Pole Switch 2.0
- Junction Box 1.0

ULHOLLAND
118 Auburn, TX 75002

INSULTING ENGINEERS
VIRGIUS

SULLY

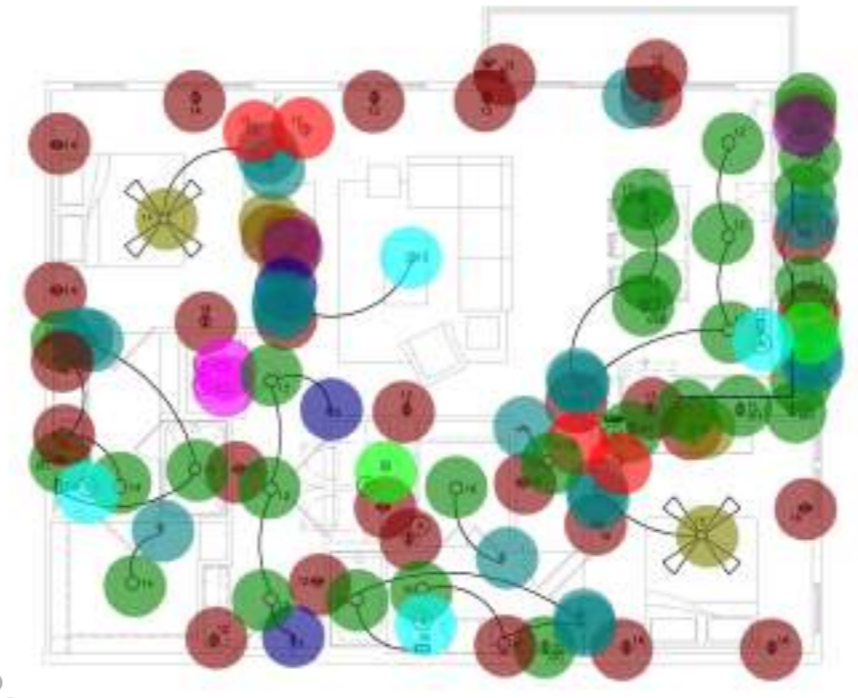
Cravity.com



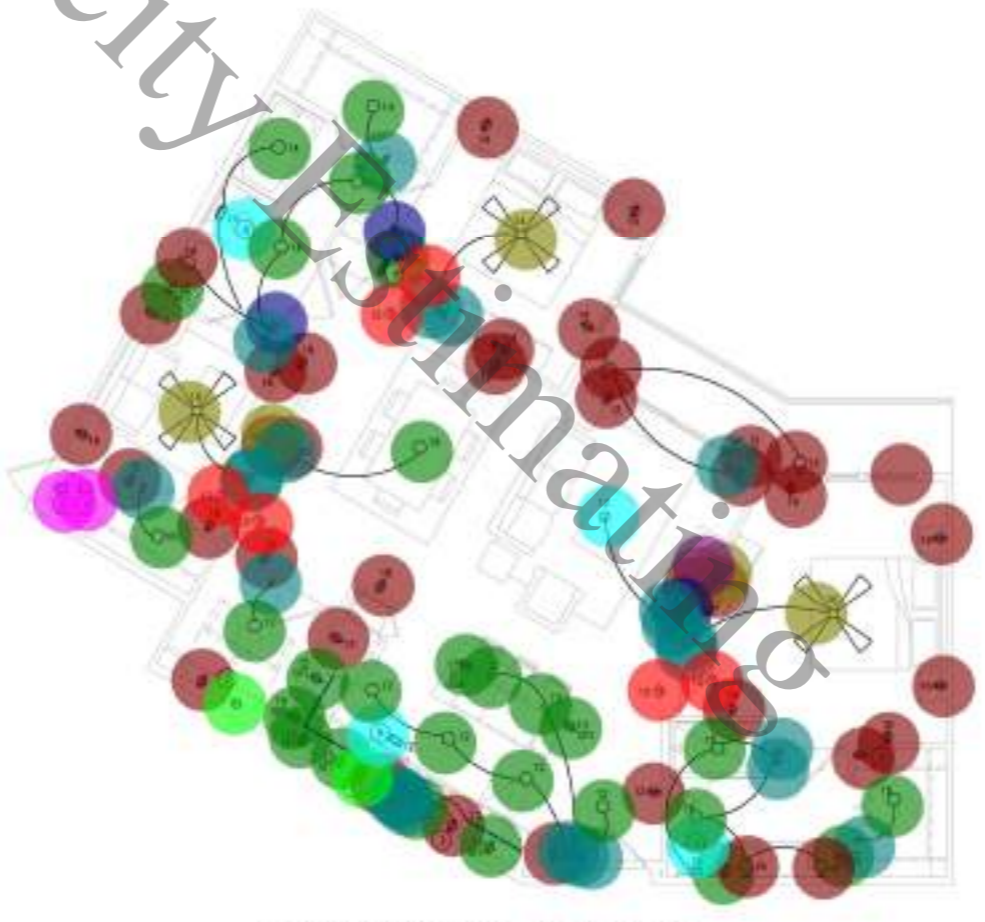
1.0	Junction Box	1.0	WALL SOCKET LIGHT
1.0	Wall Socket Light	1.0	SWITCH
1.0	Switch	1.0	WP GFCI Duplex Receptacle
1.0	WP GFCI Duplex Receptacle	1.0	TELE/DATA OUTLET
2.0	Tele/Data Outlet	1.0	DUPLEX RECEPTACLE
6.0	Duplex Receptacle	1.0	CEILING FAN
1.0	Ceiling Fan	1.0	TV OUTLET
1.0	TV Outlet	2.0	DOWN LIGHT FIXTURE
2.0	Down Light Fixture	2.0	DUPLEX RECEPTACLE
2.0	Duplex Receptacle	2.0	TELE/DATA OUTLET
2.0	Tele/Data Outlet	1.0	GFI DUPLEX RECEPTACLE
1.0	GFI Duplex Receptacle	1.0	TV OUTLET
1.0	TV Outlet	1.0	FIRE ALARM COMBO-AUDIO/VISUAL
1.0	Fire Alarm Combo-Audio/Visual	1.0	SWITCH
1.0	Switch	2.0	SPECIAL OUTLET
2.0	Special Outlet	4.0	WALL SOCKET LIGHT
4.0	Wall Socket Light	2.0	SMOKE DETECTOR
2.0	Smoke Detector	2.0	NON-FUSED DISCONNECT SWITCH
2.0	Non-Fused Disconnect Switch	1.0	CEILING FAN
1.0	Ceiling Fan	1.0	UNDER CABINET LIGHT
1.0	Under Cabinet Light	1.0	DOWN LIGHT FIXTURE
1.0	Down Light Fixture	1.0	PANEL BOARD (208/120 VOLT)
1.0	Panel Board (208/120 Volt)	1.0	EXHAUST FAN CONNECTION
1.0	Exhaust Fan Connection	1.0	WP GFCI DUPLEX RECEPTACLE
1.0	WP GFCI Duplex Receptacle	1.0	JUNCTION BOX
1.0	Junction Box	1.0	GFI DUPLEX RECEPTACLE
1.0	GFI Duplex Receptacle	1.0	SWITCH
1.0	Switch	1.0	JUNCTION BOX
1.0	Junction Box	1.0	WALL SOCKET LIGHT
1.0	Wall Socket Light	1.0	DUPLEX RECEPTACLE
1.0	Duplex Receptacle	1.0	TELE/DATA OUTLET
1.0	Tele/Data Outlet	1.0	CEILING FAN
1.0	Ceiling Fan	1.0	WP GFCI DUPLEX RECEPTACLE
1.0	WP GFCI Duplex Receptacle	1.0	TV OUTLET
1.0	TV Outlet	1.0	DOWN LIGHT FIXTURE
1.0	Down Light Fixture	1.0	DUPLEX RECEPTACLE
1.0	Duplex Receptacle	1.0	TV OUTLET
1.0	TV Outlet	1.0	CEILING FAN
1.0	Ceiling Fan	1.0	WP GFCI DUPLEX RECEPTACLE
1.0	WP GFCI Duplex Receptacle	1.0	TELE/DATA OUTLET
1.0	Tele/Data Outlet	1.0	WALL SOCKET LIGHT
1.0	Wall Socket Light	1.0	SWITCH
1.0	Switch	1.0	JUNCTION BOX
1.0	Junction Box	1.0	GFI DUPLEX RECEPTACLE
1.0	GFI Duplex Receptacle	1.0	SMOKE DETECTOR
1.0	Smoke Detector	1.0	JUNCTION BOX
1.0	Junction Box	1.0	WALL SOCKET LIGHT
1.0	Wall Socket Light	1.0	SWITCH
1.0	Switch	1.0	TELE/DATA OUTLET
1.0	Tele/Data Outlet	1.0	DUPLEX RECEPTACLE
1.0	Duplex Receptacle	1.0	WP GFCI DUPLEX RECEPTACLE
1.0	WP GFCI Duplex Receptacle	1.0	CEILING FAN
1.0	Ceiling Fan	1.0	TV OUTLET
1.0	TV Outlet	1.0	FIRE ALARM COMBO-AUDIO/VISUAL
1.0	Fire Alarm Combo-Audio/Visual	1.0	JUNCTION BOX
1.0	Junction Box	1.0	WALL SOCKET LIGHT
1.0	Wall Socket Light	1.0	SWITCH
1.0	Switch	1.0	WP GFCI DUPLEX RECEPTACLE
1.0	WP GFCI Duplex Receptacle	1.0	TELE/DATA OUTLET
1.0	Tele/Data Outlet	1.0	DUPLEX RECEPTACLE
1.0	Duplex Receptacle	1.0	WP GFCI DUPLEX RECEPTACLE
1.0	WP GFCI Duplex Receptacle	1.0	CEILING FAN
1.0	Ceiling Fan	1.0	TV OUTLET
1.0	TV Outlet	1.0	JUNCTION BOX
1.0	Junction Box	1.0	WALL SOCKET LIGHT
1.0	Wall Socket Light	1.0	SWITCH
1.0	Switch	1.0	TELE/DATA OUTLET
1.0	Tele/Data Outlet	1.0	DUPLEX RECEPTACLE
1.0	Duplex Receptacle	1.0	WP GFCI DUPLEX RECEPTACLE
1.0	WP GFCI Duplex Receptacle	1.0	CEILING FAN
1.0	Ceiling Fan	1.0	TV OUTLET
1.0	TV Outlet	1.0	FIRE ALARM COMBO-AUDIO/VISUAL

Veritas

- Duplex Receptacle 31.0
- WP GFCI Duplex Receptacle 2.0
- GFI Duplex Receptacle 12.0
- Non-Fused Disconnect Switch 2.0
- Ceiling Fan 3.0
- Under Cabinet Light 11.0 FT
- Tele/Data Outlet 3.0
- TV Outlet 1.0
- Fire Alarm Combo-Audio/Visual 1.0
- Three Pole switch 2.0
- Switch 23.0
- Wall Socket Light 5.0
- Special Outlet 2.0
- Smoke Detector 6.0
- Junction Box 1.0
- Exhaust Fan Connection 3.0
- Down Light Fixture 16.0
- Duplex Receptacle 26.0
- Tele/Data Outlet 4.0
- GFI Duplex Receptacle 14.0
- TV Outlet 2.0
- Fire Alarm Combo-Audio/Visual 1.0
- Three Pole switch 2.0
- Switch 19.0
- Wall Socket Light 4.0
- Special Outlet 2.0
- Smoke Detector 4.0
- Ceiling Fan 2.0
- Non-Fused Disconnect Switch 2.0
- Down Light Fixture 15.0
- Under Cabinet Light 12.2 FT
- Exhaust Fan Connection 3.0
- WP GFCI Duplex Receptacle 1.0
- Junction Box 1.0



1 UNIT B4-1 PLAN - ELECTRICAL
SCALE: 1/4"=1'-0"



2 UNIT B7 PLAN - ELECTRICAL
SCALE: 1/4"=1'-0"

GENERAL NOTES:

- A. APARTMENT ELECTRICAL DEVICES SHALL BE PLACED AS FOLLOWS UNLESS CONTRACTOR TO VERIFY MOUNTING HEIGHTS WITH ARCHITECT/INTERIOR DESIGNER.
 LIGHTING SWITCHES & THERMOSTATS 48" HFT
 RECEPTACLES 18" HFT
 COASTER TOP DEVICES (ITCHING) 42" HFT
 PHONE (OUTLET & SW) 48" HFT
 COASTER TOP DEVICES (DATA) 42" HFT
 REFRIGERATOR 60" HFT
- B. DEVICE PLACEMENT/FACING MUST MEET THE REQUIREMENTS OF THE HCC, ALL STATE AND LOCAL ORDINANCES AND THE FAIR HOUSING ACT.
- C. EACH APARTMENT UNIT WITH NON-ADJACENT BEDROOMS SHALL HAVE SMOKE DETECTOR ALARMS INTERLOCKED TOGETHER. ONE DETECTOR IN EACH UNIT TO BE COMBINATION SMOKE AND CO DETECTOR. ALL DETECTORS TO BE LOW FREQUENCY ALARM SIGNAL PER NFPA 72 REQUIREMENTS.
- D. ALL SMOKE DETECTORS IN HALLWAYS SHALL BE WITHIN 12' OF HIGHEST POSE.
- E. REFER TO MECHANICAL / PLUMBING DRAWINGS FOR EXACT LOCATION OF ALL SHAL EQUIPMENT.
- F. ALL FEEDERS TO UNIT PANELS SHALL BE SER CABLE.
- G. REFER TO INTERIOR DESIGN/ARCHITECTURAL DRAWINGS FOR ADDITIONAL INFORMATION/REQUIREMENTS.
- H. USE NM-B CABLE TO BRANCH CIRCUITS WITHIN THE PERIMETER WALLS OF EACH APARTMENT FROM THAT UNIT'S INDIVIDUAL PANEL, WHERE ALLOWED BY CODE.
- I. ALL BRANCH CIRCUITS THAT SUPPLY 120 VOLT, SINGLE PHASE, 15 AMP AND 20 AMPERE CIRCUITS PER NEC-210.12 BE PROTECTED BY AN ARC FAULT CIRCUIT INTERRUPTER LISTED TO PROVIDE PROTECTION OF THE ENTIRE BRANCH CIRCUIT.
- J. REFER TO ARCHITECTURAL PLANS FOR EXTERIOR WALL CONDITIONS. ADJUST RECEPTACLE SPACING IN FIELDS AS REQUIRED TO MEET THE REQUIREMENTS OF NEC 210.52. PROVIDE EXTERIOR GFCI RECEPTACLES AND BRACKET LIGHT FIXTURES WITH SWITCH AT DOOR AT ALL BALCONY/EXTERIOR ENTRANCE CONNECTIONS. CIRCUIT TO MAINST GENERAL PLEASURE CIRCUIT.
- K. PROVIDE TAMPER RESISTANT RECEPTACLES PER NEC 406.12.
- L. PROVIDE 200V RECEPTACLE EQUAL TO LEVERON 15005-802-00W AT LOCATIONS INDICATED BY TRAFF. USE RECEPTACLES AT SINKS AND BUILT-IN PAVING LOCATIONS TO BE MOUNTED IF ABOVE WORK SURFACE. REFER TO INTERIOR DESIGN PLANS FOR ADDITIONAL INFORMATION.
- M. ALL RECEPTACLES LABELED "OFF" AND ALL 120V, 15A AND 20A RECEPTACLES INSTALLED WITHIN 8' OF A DOOR OR IN ANY OTHER KEY LOCATION SHALL BE SPEC PROTECTED. IN CASE SUCH RECEPTACLE IS NOT READILY ACCESSIBLE, GFCI PROTECTION SHALL BE PROVIDED THROUGH GFCI BREAKER.

NOTES BY SYMBOL:

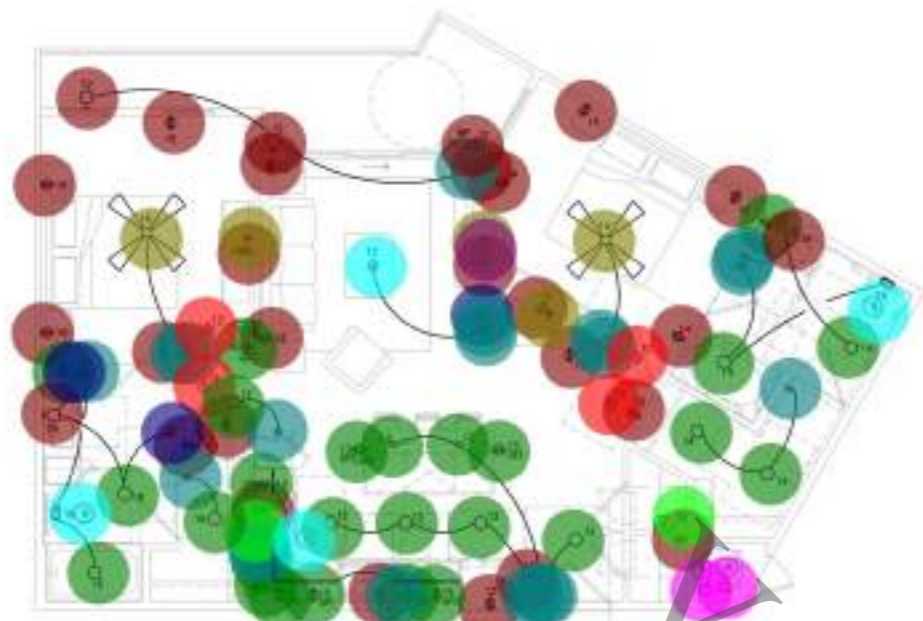
- ① 200V RANGE RECEPTACLE. CIRCUIT TO CIRCUIT 1/3.
- ② MICROWAVE AND/OR HOOD RECEPTACLE. PROVIDE SWITCH FOR HOOD CONTROLS FOR ALL WALL/DOOR UNITS AT ACCESSIBLE LOCATION ABOVE COUNTER. EXACT LOCATION FOR INTERIOR DESIGNER/ARCHITECT. CIRCUIT TO CIRCUIT 23.
- ③ HALF SWITCHED UNDER COUNTER RECEPTACLE FOR DISPOSAL AND (DISCONNECTED FROM GFCI BREAKER. SWITCHED HALF FOR DISPOSAL. CONTROLLED FROM BELOW SINK. COORDINATE FINAL SWITCH LOCATION WITH ARCHITECT/OWNER. PROVIDE AIR-SWITCH CONTROL AT ISLAND SINKS. WHEN DISCONNECTED BY 200V SINK. PROVIDE SEPARATE DEVICE AS INDICATED. CIRCUIT TO CIRCUIT 13.
- ④ DOUBLE RECEPTACLE FOR TELE/DATA SYSTEM (W/ SERVIC. OMP. PROVIDE APPROPRIATE REQUIREMENTS BETWEEN TRADES. CIRCUIT TO CIRCUIT 14).
- ⑤ PROVIDE DISCONNECT AND POWER TO AIR HANDLING UNIT AND HOOD MOUNTED CU. VERIFY EXACT LOCATION WITH PRIOR TO PUNCH-IN. CIRCUIT TO 2/4 (AND 16/26 AS REQUIRED) AND CU TO CIRCUIT 6/5.
- ⑥ PROVIDE DISCONNECT AND POWER TO ELECTRIC WATER HEATER. VERIFY EXACT LOCATION WITH PLUMBING CONTRACTOR PRIOR TO PUNCH-IN. CIRCUIT TO CIRCUIT 5/7. CIRCUIT NUMBER TO CIRCUIT 21.
- ⑦ 200V DRYER RECEPTACLE AND WASHING RECEPTACLE FROM GFCI BREAKER. CIRCUIT TO CIRCUIT 5/7. CIRCUIT NUMBER TO CIRCUIT 21.
- ⑧ EXHAUST FAN CONTROLLED BY SWITCH DISCONNECT WITH "OFF" IN AREA BEING SERVICED. REFER TO MECHANICAL PLANS FOR EXACT FAN LOCATION.
- ⑨ LOAD CENTER. REFER TO SCHEDULES. WHERE LOAD CENTER IS NOT SHOWN ON SWING, PRINT TO MATCH. COORDINATE WITH ARCHITECT AS REQUIRED.

REVERSE RECEPTACLE CIRCUIT TO SMALL APPLIANCE BRANCH CIRCUIT

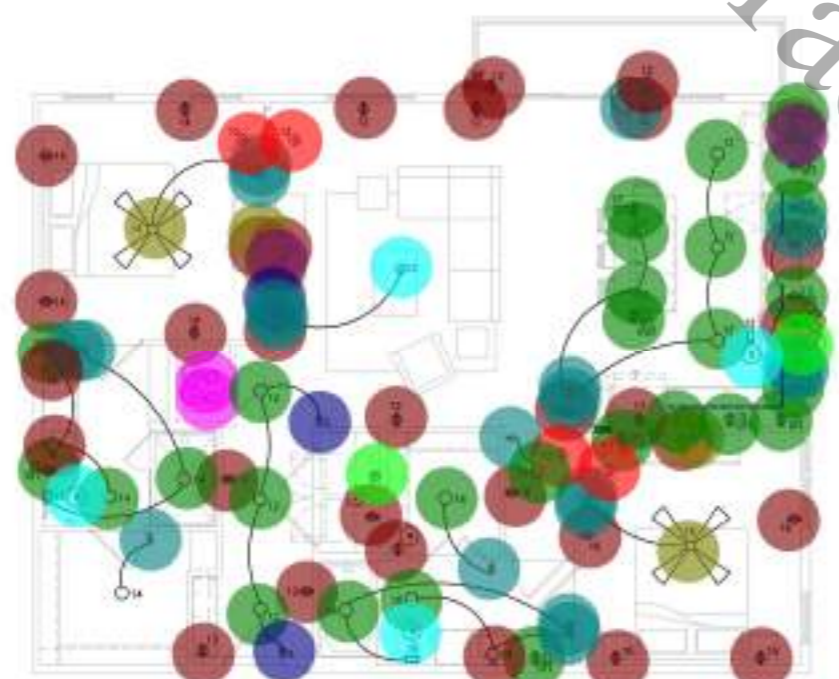
ISSUES AND REVISIONS:

No.	Date	Issue
01	08.29.22	Design Development
02	10.25.22	Permit Submittal
03	06.06.23	REVISED/REVISIONS

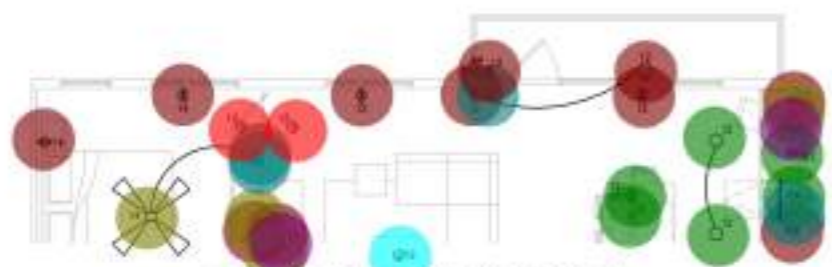




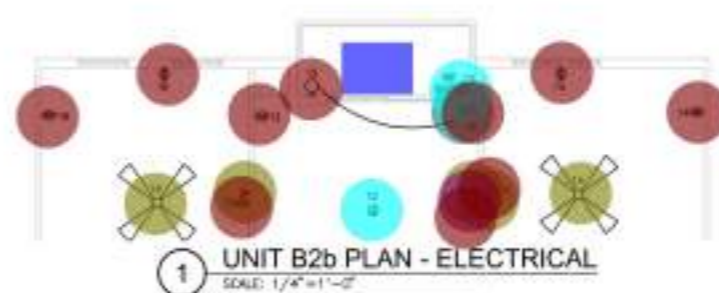
5 UNIT B3-ANSI PLAN - ELECTRICAL
SCALE: 1/4"=1'-0"



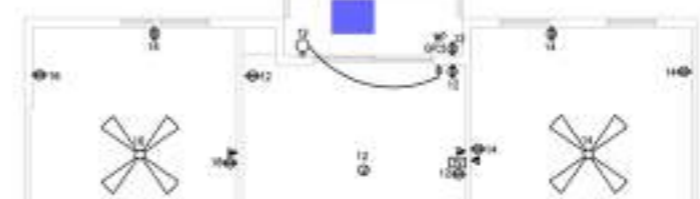
6 UNIT B4 PLAN - ELECTRICAL
SCALE: 1/4"=1'-0"



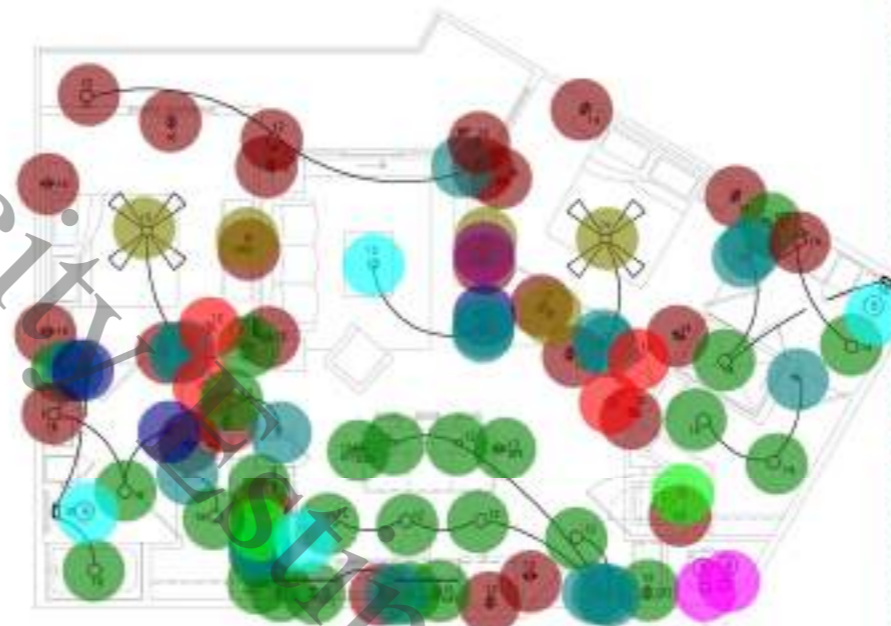
7 UNIT B4a PLAN - ELECTRICAL
SCALE: 1/4"=1'-0"



1 UNIT B2b PLAN - ELECTRICAL
SCALE: 1/4"=1'-0"



2 UNIT B2b-1 PLAN - ELECTRICAL
SCALE: 1/4"=1'-0"



3 UNIT B3 PLAN - ELECTRICAL
SCALE: 1/4"=1'-0"



4 UNIT B3a PLAN - ELECTRICAL
SCALE: 1/4"=1'-0"

• Duplex Receptacle	9.0	•
• Tele/Data Outlet	3.0	•
• GFI Duplex Receptacle	3.0	•
• TV Outlet	2.0	•
• Switch	4.0	•
• Wall Socket Light	1.0	•
• Smoke Detector	2.0	•
• Down Light Fixture	2.0	•
• Ceiling Fan	1.0	•
• Under Cabinet Light	2.2 FT	•
• Junction Box	1.0	•
• WP GFCI Duplex Receptacle	1.0	•
• Duplex Receptacle	26.0	•
• Tele/Data Outlet	4.0	•
• GFI Duplex Receptacle	14.0	•
• TV Outlet	2.0	•
• Fire Alarm Combo-Audio/Visual	1.0	•
• Switch	19.0	•
• Special Outlet	2.0	•
• Wall Socket Light	4.0	•
• Smoke Detector	4.0	•
• Non-Fused Disconnect Switch	2.0	•
• Ceiling Fan	2.0	•
• Under Cabinet Light	12.3 FT	•
• Down Light Fixture	14.0	•
• Junction Box	1.0	•
• Exhaust Fan Connection	3.0	•
• WP GFCI Duplex Receptacle	1.0	•
• Three Pole switch	2.0	•
• Duplex Receptacle	23.0	•
• Tele/Data Outlet	3.0	•
• GFI Duplex Receptacle	12.0	•
• TV Outlet	1.0	•
• Fire Alarm Combo-Audio/Visual	1.0	•
• Switch	19.0	•
• Special Outlet	2.0	•
• Wall Socket Light	4.0	•
• Smoke Detector	4.0	•
• Non-Fused Disconnect Switch	2.0	•
• Ceiling Fan	2.0	•
• Under Cabinet Light	10.2 FT	•
• Down Light Fixture	14.0	•
• Junction Box	1.0	•
• Exhaust Fan Connection	3.0	•
• WP GFCI Duplex Receptacle	1.0	•
• Three Pole switch	2.0	•
• Tele/Data Outlet	2.0	•
• TV Outlet	1.0	•
• Switch	1.0	•
• Junction Box	1.0	•
• Ceiling Fan	2.0	•
• WP GFCI Duplex Receptacle	1.0	•
• Duplex Receptacle	9.0	•
• Wall Socket Light	1.0	•
• Duplex Receptacle	23.0	•
• Tele/Data Outlet	3.0	•
• GFI Duplex Receptacle	13.0	•
• TV Outlet	1.0	•
• Fire Alarm Combo-Audio/Visual	1.0	•
• Switch	19.0	•
• Special Outlet	2.0	•
• Wall Socket Light	4.0	•
• Smoke Detector	4.0	•
• Non-Fused Disconnect Switch	2.0	•
• Ceiling Fan	2.0	•
• Under Cabinet Light	10.3 FT	•
• Down Light Fixture	14.0	•
• Junction Box	1.0	•
• Exhaust Fan Connection	3.0	•
• WP GFCI Duplex Receptacle	1.0	•
• Three Pole switch	2.0	•
• Tele/Data Outlet	3.0	•
• TV Outlet	1.0	•
• Switch	1.0	•
• Junction Box	1.0	•
• Ceiling Fan	2.0	•
• WP GFCI Duplex Receptacle	1.0	•
• Duplex Receptacle	9.0	•
• Wall Socket Light	1.0	•

JULHOLLAND
1418 Ashburn, TX 75002

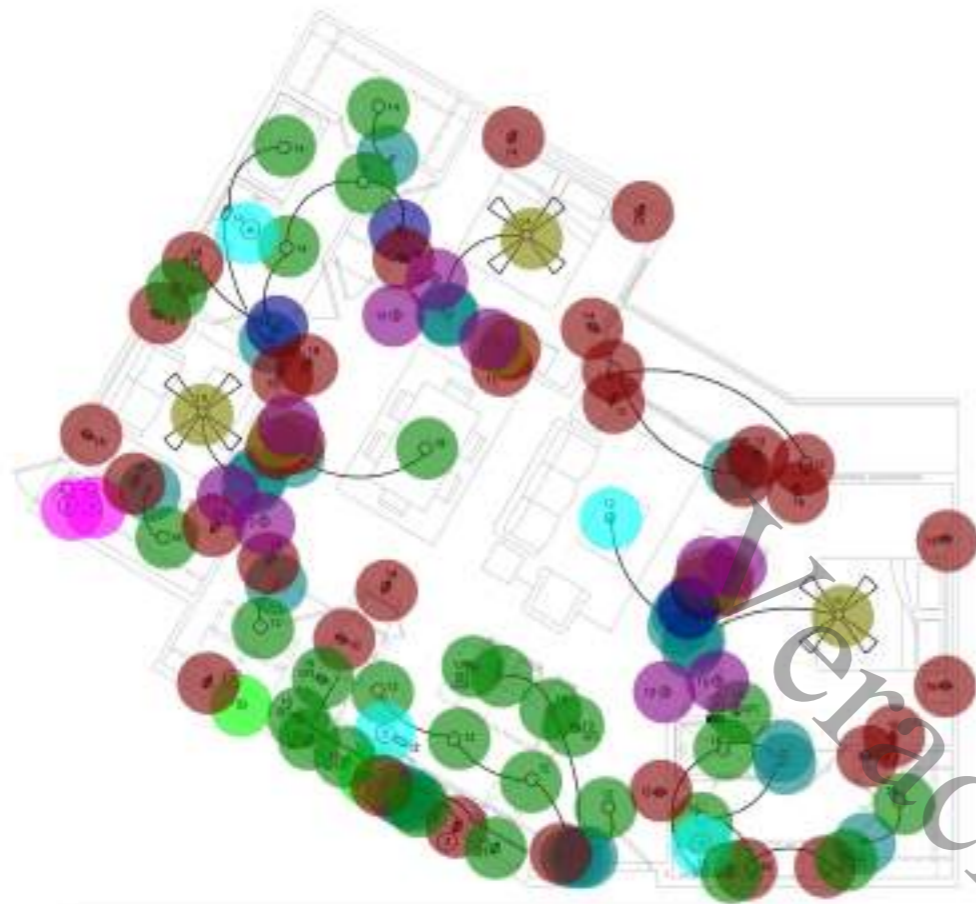
WYNNE
1151 Austin, TX 78702

ARTNERS
Street, Suite 100
TX 75217

CONSULTING ENGINEERS
ELECTRICAL - VIRTUOUS

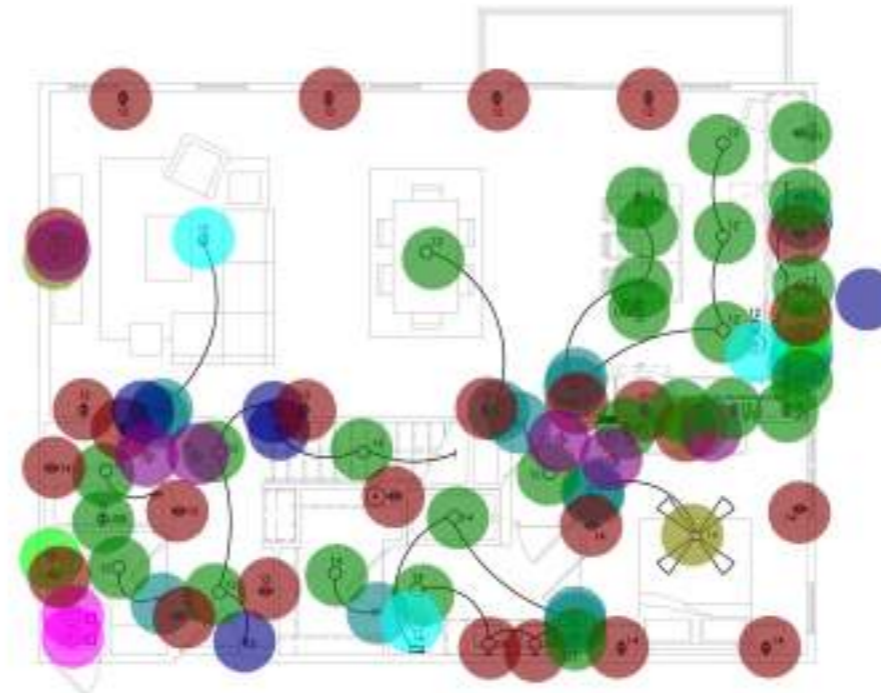
SWALLEY

E409



UNIT B7 PLAN - ELECTRICAL
SCALE: 1/4"=1'-0"

• TV Outlet	1.0
• Switch	5.0
• Ceiling Fan	1.0
• Wall Socket Light	1.0
• Three Pole Switch	1.0
• Exhaust Fan Connection	1.0
• Down Light Fixture	4.0
• Fire Alarm Combo-Audio/Visual	1.0
• Duplex Receptacle	6.0
• Tele/Data Outlet	1.0
• GFI Duplex Receptacle	1.0
• Smoke Detector	2.0
• Switch	25.0
• Three Pole switch	2.0
• Special Outlet	2.0
• Wall Socket Light	5.0
• Ceiling Fan	3.0
• Non-Fused Disconnect Switch	2.0
• Down Light Fixture	16.0
• Under Cabinet Light	11.0 FT
• Exhaust Fan Connection	3.0
• Junction Box	1.0
• Duplex Receptacle	31.0
• Tele/Data Outlet	4.0
• Fire Alarm Combo-Audio/Visual	1.0
• WP GFCI Duplex Receptacle	1.0
• GFI Duplex Receptacle	12.0
• TV Outlet	4.0
• Smoke Detector	6.0
• Switch	15.0
• Three Pole switch	3.0
• Special Outlet	2.0
• Wall Socket Light	2.0
• Ceiling Fan	1.0
• Non-Fused Disconnect Switch	2.0
• Down Light Fixture	15.0
• Under Cabinet Light	12.2 FT
• Exhaust Fan Connection	2.0
• Junction Box	1.0
• Duplex Receptacle	24.0
• Tele/Data Outlet	2.0
• Fire Alarm Combo-Audio/Visual	2.0
• TV Outlet	2.0
• GFI Duplex Receptacle	12.0
• Smoke Detector	4.0



UNIT B6M-1 PLAN - ELECTRICAL
SCALE: 1/4"=1'-0"



UNIT B6M-2 PLAN - ELECTRICAL
SCALE: 1/4"=1'-0"

GENERAL NOTES:

- APARTMENT ELECTRICAL DEVICES SHALL BE PLACED AS FOLLOWS:
UNLESS CONTRACTOR TO VERIFY MOUNTING HEIGHTS WITH ARCHITECT/INTERIOR DESIGNER.
LIGHTING SWITCHES & THERMOSTATS 48" AFF
RECEPTACLES 18" AFF
COUNTER TOP DEVICES (KITCHEN) 42" AFF
PHONE JACKET & DSI 48" AFF
COUNTER TOP DEVICES (BATH) 42" AFF
REFRIGERATOR 60" AFF
- DEVICE PLACEMENT/SPACING MUST MEET THE REQUIREMENTS OF THE NEC, ALL STATE AND LOCAL ORDINANCES AND THE FAIR HOUSING ACT.
- EACH APARTMENT UNIT WITH NON-ADJACENT BEDROOMS SHALL HAVE SMOKE DETECTOR ALARMS BOP/LOCKED TOGETHER. ONE DETECTOR IN EACH UNIT TO BE COMBINATION SMOKE AND CO DETECTOR. ALL DETECTORS TO BE LOW FREQUENCY ALARM SIGNAL FOR NFPA 72 REQUIREMENTS.
- ALL SMOKE DETECTORS IN HALLS AREAS SHALL BE WITHIN 12' OF NEAREST DOOR.
- REFER TO MECHANICAL / PLUMBING DRAWINGS FOR EXACT LOCATION OF ALL FINAL EQUIPMENT.
- ALL FEEDERS TO UNIT PANELS SHALL BE SER. CABLE.
- REFER TO INTERIOR DESIGN/ARCHITECTURAL DRAWINGS FOR ADDITIONAL INFORMATION/REQUIREMENTS.
- USE 14# NM CABLE TO BRANCH CIRCUITS WITHIN THE PERMITTED WALLS OF EACH APARTMENT FROM THAT UNIT'S INDIVIDUAL PANEL, WHERE ALLOWED BY CODE.
- ALL BRANCH CIRCUITS THAT SUPPLY 120 VOLT SINGLE PHASE, 15 AMP AND 20 AMP RECEPTACLES PER NEC-210.12 BE PROTECTED BY AN AFCI BRACI CIRCUIT INTERRUPTER LISTED TO PROVIDE PROTECTION OF THE ENTIRE BRANCH CIRCUIT.
- REFER TO ARCHITECTURAL PLANS FOR EXTERIOR WALL CONDITIONS. VERIFY RECEPTACLE SPACING IN FIELD AS REQUIRED TO MEET THE REQUIREMENTS OF NEC 210.52. PROVIDE EXTERIOR GFCI RECEPTACLE AND BRACKET LIGHT FIXTURE WITH SWITCH AT DOOR AT ALL BALCONY/EXTERIOR ENTRANCE CONDITIONS. CIRCUIT TO MAINLINE GENERAL PURPOSE CIRCUIT.
- PROVIDE TAMPER RESISTANT RECEPTACLES PER NEC 406.12.
- PROVIDE 250V RECEPTACLE EQUAL TO LEVERON 15003-803-008 AT LOCATION INDICATED BY TAMPER RESISTANT RECEPTACLE AND BULB SOCKET LOCATIONS TO BE MOUNTED IF ABOVE WORK SURFACE. REFER TO EXTERIOR DESIGN PLANS FOR ADDITIONAL INFORMATION.
- ALL RECEPTACLES LABELED "OFF" AND ALL 120V, 15A AND 20A RECEPTACLES INSTALLED WITHIN 6" OF A SEW OR IN ANY OTHER HAZARDOUS LOCATION SHALL BE SPECIALLY PROTECTED. IN CASE SUCH RECEPTACLE IS NOT READILY ACCESSIBLE, GFCI PROTECTION SHALL BE PROVIDED THROUGH SPD BREAKER.

NOTES BY OWNER:

- 250V TAMPER RESISTANT RECEPTACLE. CIRCUIT TO CIRCUIT 1/3.
- MICROWAVE AND/OR HOOD RECEPTACLE. PROVIDE SWITCH FOR HOOD CONTROLS FOR ALL RANGERS/ISETS AT ACCESSIBLE LOCATION ABOVE COUNTER. EXACT LOCATION FOR INTERIOR DESIGNER/ARCHITECT. CIRCUIT TO CIRCUIT 23.
- HALF SWITCHED UNDER COUNTER RECEPTACLE FOR DISPOSAL AND DISCONNECTED FROM GFCI BREAKER. SWITCHED HALF FOR DISPOSAL. CONTROLLED FROM BELOW SEAT. COORDINATE FINAL SWITCH LOCATION WITH ARCHITECT/OWNER. PROVIDE AIR-SWITCH CONTROL AT ISLAND SEAT. WHEN DISCONNECTED BY 2011 ENE RANGERS. PROVIDE SEPARATE DEVICE AS INDICATED. CIRCUIT TO CIRCUIT 13.
- ISLAND RECEPTACLE FOR TELE/DATA SYSTEM (W/ SERVICED DROP). COORDINATE REQUIREMENTS BETWEEN TRADES. CIRCUIT TO CIRCUIT 24.
- PROVIDE DISCONNECT AND POWER TO AIR HANDLING UNIT AND POOL MOUNTED CL. VERIFY EXACT LOCATION WITH PRIOR TO POOL-IN. CIRCUIT FSD TO 2/4 (AND 16/26 AS REQUIRED) AND CU TO CIRCUIT 6/5.
- PROVIDE DISCONNECT AND POWER TO ELECTRIC WATER HEATER. VERIFY EXACT LOCATION WITH PLUMBING CONTRACTOR PRIOR TO POOL-IN. CIRCUIT TO CIRCUIT 5/7. CIRCUIT NUMBER TO CIRCUIT 21.
- 250V TAMPER RESISTANT RECEPTACLE AND WIPER RECEPTACLE FROM GFCI BREAKER. CIRCUIT TO CIRCUIT 5/7. CIRCUIT NUMBER TO CIRCUIT 21.
- EXHAUST FAN CONTROLLED BY SWITCH. COORDINATE WITH TP. IN AREA BEING SERVED. REFER TO MECHANICAL PLANS FOR EXACT FAN LOCATION.
- LOAD CENTER. REFER TO SCHEDULES. WHERE LOAD CENTER IS NOT SHOWN OR NOT SHOWN, REFER TO MAPS. COORDINATE WITH ARCHITECT AS REQUIRED.

PROJECT OWNER:

LANG PARTNERS
1500 Drake Street, Suite 300
Dallas, TX 75207

ISSUES AND REVISIONS:

No.	Date	Issue
01	08.29.22	Design Development
02	10.25.22	Permit Submittal



PROJECT INFORMATION:

Spring VALLEY
111 W. SPRING VALLEY ROAD
RICHARDSON, TEXAS

BMA PROJECT NUMBER: 2019

DRAWING NAME:

UNIT PLANS
ELECTRICAL

SHEET NUMBER:

E412