

Project ID:	Commercial
Location:	*****
Scope of Work:	Addition and remodel
Date:	August, 17, 2024



Construction Estimation Services

Item #	Ref. Sheet #	Item Description	Unit	Quantity	Wastage	Quantity w/ Wastage	Unit Material Cost	Total Material Cost	Unit Manhour	Hourly Wage	Unit Labor Cost	Total Labor Cost	Sub Cost	Total Trade Cost
<b>DIVISION.01 GENERAL REQUIREMENTS</b>														
1		Supervision and Coordination	LS	1	0%	1	\$ -	\$ -	0.000	\$ -	\$ -	\$ -	\$ 12,000.00	
2		Submittals and Shop drawings	LS	1	0%	1	\$ -	\$ -	0.000	\$ -	\$ -	\$ -	\$ 3,000.00	
3		Final Cleaning	LS	1	0%	1	\$ -	\$ -	0.000	\$ -	\$ -	\$ -	\$ 5,000.00	
4		Mobilization Costs	LS	1	0%	1	\$ -	\$ -	0.000	\$ -	\$ -	\$ -	\$ 20,000.00	
5		Temporary Control & Facilities	LS	1	0%	1	\$ -	\$ -	0.000	\$ -	\$ -	\$ -	\$ 10,000.00	
<b>Subtotal (General Requirements)</b>														\$ 50,000
<b>DIVISION 02- SITE WORK/ EXISTING CONDITIONS</b>														
<b>Site</b>														
6		Landscaping Area	SF	25676	5%	26960	\$ 0.89	\$ 23,994.22	0.008	\$ 40.00	\$ 0.32	\$ 8,627.14	\$ 32,621.36	
7		(3'-6" H) Galvanized Metal Railing	LF	64	5%	67	\$ 112.20	\$ 7,539.84	0.285	\$ 40.00	\$ 11.40	\$ 766.08	\$ 8,305.92	
8		(1'-6"W x 3'-0" H) Footing Concrete - 64 LF	CY	10.67	5%	11	\$ 345.65	\$ 3,811.28	3.200	\$ 40.00	\$ 128.00	\$ 1,433.60	\$ 5,304.88	
9		Asphalt Pavement	SF	69491	5%	72966	\$ 5.88	\$ 429,037.43	0.075	\$ 40.00	\$ 3.00	\$ 218,896.65	\$ 647,934.08	
10		6" H Concrete Curb	LF	1726	5%	1812	\$ 11.20	\$ 20,297.76	0.125	\$ 40.00	\$ 5.00	\$ 9,061.50	\$ 29,359.26	
11		4" Concrete Sidewalk - 2447 SF	CY	29.91	5%	31	\$ 345.65	\$ 10,854.50	3.200	\$ 40.00	\$ 128.00	\$ 4,019.61	\$ 14,874.11	
12		4" Insulation Under Side Walk	SF	2447	5%	2569	\$ 2.72	\$ 6,988.63	0.025	\$ 40.00	\$ 1.00	\$ 2,569.35	\$ 9,557.98	
13		Bollards Fill With Concrete And Crown	EA	12	0%	12	\$ 298.65	\$ 3,583.80	2.350	\$ 40.00	\$ 94.00	\$ 1,128.00	\$ 4,711.80	
14		(1'-2" Dia, 4'-0" Deep) Bollards Concrete Footing - 12 EA	CY	1.91	5%	2	\$ 345.65	\$ 693.34	3.200	\$ 40.00	\$ 128.00	\$ 256.75	\$ 950.09	
15		(2'-0" Wide) Paint On Cross Walk	LF	132	5%	139	\$ 1.25	\$ 173.25	0.012	\$ 40.00	\$ 0.48	\$ 66.53	\$ 239.78	
16		4" Painted Parking Strips	LF	1913	5%	2009	\$ 1.25	\$ 2,510.81	0.012	\$ 40.00	\$ 0.48	\$ 964.15	\$ 3,474.96	
17		Handicap Painted Sign	EA	8	0%	8	\$ 215.65	\$ 1,725.20	1.520	\$ 40.00	\$ 60.80	\$ 486.40	\$ 2,211.60	
18		Parking Lighting	EA	8	0%	8	\$ 1,325.20	\$ 10,601.60	5.200	\$ 40.00	\$ 208.00	\$ 1,664.00	\$ 12,265.60	
19		Ramp Concrete In Slope - 50 SF	SF	50	5%	53	\$ 6.32	\$ 331.80	0.058	\$ 40.00	\$ 2.32	\$ 121.80	\$ 453.60	
20		Cigarette Receptacle	EA	2	0%	2	\$ 235.62	\$ 471.24	0.752	\$ 40.00	\$ 30.08	\$ 60.16	\$ 531.40	
21		Trash Receptacle	EA	2	0%	2	\$ 271.20	\$ 542.40	0.982	\$ 40.00	\$ 39.28	\$ 78.56	\$ 620.96	
22		8" Truck Loading Concrete Pad	SF	1488	5%	1562	\$ 6.32	\$ 9,874.37	0.058	\$ 40.00	\$ 2.32	\$ 3,624.77	\$ 13,499.14	
23		Galvanized Metal Steel Stair	EA	1	0%	1	\$ 5,965.75	\$ 5,965.75	9.240	\$ -	\$ -	\$ -	\$ 5,965.75	
24		Gas Meter	EA	2	0%	2	\$ 698.65	\$ 1,397.30	3.880	\$ 40.00	\$ 155.20	\$ 310.40	\$ 1,707.70	
<b>Trash Enclosure</b>														
25		1"x6" Pressure Treated Fence Board	SF	130	5%	137	\$ 4.25	\$ 580.13	0.035	\$ 40.00	\$ 1.40	\$ 191.10	\$ 771.23	
26	A1-1	15 KPA Reinforced 8" Thick Concrete Pad - 420 SF - 4" Granular Fill	CY	10.42	5%	11	\$ 368.20	\$ 4,029.34	3.350	\$ 40.00	\$ 134.00	\$ 1,466.41	\$ 5,495.74	
27		18" Long Zinc Plated Chain - Model#: #1dkf5 - By Ackland Grainger	EA	1	0%	1	\$ 85.00	\$ 85.00	0.400	\$ 40.00	\$ 16.00	\$ 16.00	\$ 101.00	
28		2"x3"x1/4" Galvanized Steel Angle Frame	EA	2	0%	2	\$ 190.30	\$ 380.60	1.250	\$ 40.00	\$ 50.00	\$ 100.00	\$ 480.60	
29		2"x4" Pressure Treated Horizontal Support (8'-0" H)	LF	37	5%	39	\$ 1.85	\$ 71.87	0.022	\$ 40.00	\$ 0.88	\$ 34.19	\$ 106.06	
30		2.17"x1.38"x1/4" Angle Brace - 22 LF	LBS	128.3	5%	135	\$ 2.15	\$ 289.60	0.020	\$ 40.00	\$ 0.80	\$ 107.76	\$ 397.35	
31		3 Heavy Duty Hinges - Model#: H92	EA	12	0%	12	\$ 60.98	\$ 731.76	0.852	\$ 40.00	\$ 34.08	\$ 408.96	\$ 1,140.72	
32		3/4" Dia Galvanized D-Pull Handle	EA	2	0%	2	\$ 32.85	\$ 65.70	0.520	\$ 40.00	\$ 20.80	\$ 41.60	\$ 107.30	
33		5/16" x2" x3/4" Zinc Plated U-Bolt	EA	1	0%	1	\$ 8.20	\$ 8.20	0.120	\$ 40.00	\$ 4.80	\$ 4.80	\$ 13.00	
34		6"x6" Concrete Curb	LF	35	5%	37	\$ 11.20	\$ 411.60	0.125	\$ 40.00	\$ 5.00	\$ 183.75	\$ 595.35	
35		6"x6" H.S.S Galvanized Column (8'-0" H) (4 EA)	LBS	1197.92	5%	1258	\$ 2.12	\$ 2,666.57	0.018	\$ 40.00	\$ 0.72	\$ 905.63	\$ 3,572.20	
36		8"x8"x1/2" Galvanized Steel Base Plate - 4 EA	LBS	36.3008	5%	38	\$ 2.12	\$ 80.81	0.018	\$ 40.00	\$ 0.72	\$ 27.44	\$ 108.25	
37		(4) 1/2" Dia Anchor Bolts - 4 EA	EA	16	0%	16	\$ 8.98	\$ 143.68	0.052	\$ 40.00	\$ 2.08	\$ 32.28	\$ 176.96	
38		Galvanized Joist Hanger	EA	6	0%	6	\$ 18.98	\$ 113.88	0.100	\$ 40.00	\$ 4.00	\$ 24.00	\$ 137.88	
39		Guide Wheel For Door	EA	2	0%	2	\$ 78.66	\$ 157.32	0.685	\$ 40.00	\$ 27.40	\$ 54.80	\$ 212.12	
40		Metal Cylinder Drop Pin In Slab	EA	4	0%	4	\$ 9.88	\$ 39.52	0.100	\$ 40.00	\$ 4.00	\$ 16.00	\$ 55.52	
41		Pad Lock Supply And Installed By TJX	EA	1	0%	1	\$ -	\$ -	0.000	\$ -	\$ -	\$ -	\$ -	
41		Trash Bin	EA	2	0%	2	\$ 185.65	\$ 371.30	0.500	\$ 40.00	\$ 20.00	\$ 40.00	\$ 411.30	
<b>Excavation</b>														
42		Excavation Concrete Footing In Site (Cut)	CY	21.89	5%	23	\$ -	\$ -	0.986	\$ 40.00	\$ 39.43	\$ 906.32	\$ 906.32	
43		Excavation Concrete Footing In Site (Fill)	CY	9.12	5%	10	\$ -	\$ -	1.250	\$ 40.00	\$ 50.00	\$ 478.80	\$ 478.80	
<b>Subtotal (Site Work/ Existing Conditions)</b>														\$ 809,858
<b>DIVISION 06- WOOD, PLASTIC &amp; COMPOSITES</b>														
<b>Trims</b>														
44		Door Trim	LF	556	5%	584	\$ 3.20	\$ 1,868.16	0.025	\$ 40.00	\$ 1.00	\$ 583.80	\$ 2,451.96	
45		Window Trim	LS	485	5%	509	\$ 3.20	\$ 1,629.60	0.025	\$ 40.00	\$ 1.00	\$ 509.25	\$ 2,138.85	
<b>Blocking</b>														
46	A2.31	2"x2" Exterior Grade Blocking	LF	776	5%	815	\$ 2.12	\$ 1,727.38	0.028	\$ 40.00	\$ 1.12	\$ 912.58	\$ 2,639.95	
47		1-1/2"x1/2" Exterior Grade Blocking	LF	776	5%	815	\$ 1.98	\$ 1,613.30	0.025	\$ 40.00	\$ 1.00	\$ 814.80	\$ 2,428.10	
48		1-1/2"x3-1/2" Treated Wood Blocking	LF	371	5%	390	\$ 3.10	\$ 1,207.61	0.028	\$ 40.00	\$ 1.12	\$ 436.30	\$ 1,643.90	
<b>Subtotal (Wood &amp; Plastic Composites)</b>														\$ 11,303
<b>DIVISION 07- THERMAL &amp; MOISTURE PROTECTION</b>														
<b>Roofing</b>														
49		R-20 Batt Insulation	SF	765	5%	803	\$ 0.98	\$ 787.19	0.012	\$ 40.00	\$ 0.48	\$ 385.56	\$ 1,172.75	
50		Air Barrier	SF	765	5%	803	\$ 0.42	\$ 337.37	0.009	\$ 40.00	\$ 0.36	\$ 289.17	\$ 626.54	
51		(8") Metal Runner	LF	170	5%	179	\$ 3.35	\$ 597.98	0.028	\$ 40.00	\$ 1.12	\$ 199.92	\$ 797.90	
52		(8") Deflection Track	LF	170	5%	179	\$ 3.35	\$ 597.98	0.028	\$ 40.00	\$ 1.12	\$ 199.92	\$ 797.90	
53		Sealant (As Required)	LF	340	5%	357	\$ 0.25	\$ 89.25	0.012	\$ 40.00	\$ 0.48	\$ 171.36	\$ 260.61	
54		"R1" 60 Mil Firestone Ultraply TPO	SF	29394	5%	30864	\$ 1.92	\$ 59,258.30	0.015	\$ 40.00	\$ 0.60	\$ 18,518.22	\$ 77,776.52	
55		1" Wood Fiber	SF	29394	5%	30864	\$ 1.44	\$ 44,347.28	0.020	\$ 40.00	\$ 0.80	\$ 24,690.96	\$ 69,038.24	
56		1-1/2" Metal Deck Roof	SF	29394	5%	30864	\$ 3.98	\$ 122,837.53	0.028	\$ 40.00	\$ 1.12	\$ 34,567.34	\$ 157,404.87	
57		Cricket Roof	SF	109	5%	114	\$ 5.65	\$ 646.64	0.058	\$ 40.00	\$ 2.32	\$ 265.52	\$ 912.17	
58		Downspout -5 EA	LF	125	5%	131	\$ 6.32	\$ 829.50	0.048	\$ 40.00	\$ 1.92	\$ 252.00	\$ 1,081.50	
59		Roof Drain	EA	7	0%	7	\$ 145.20	\$ 1,016.40	1.200	\$ 40.00	\$ 48.00	\$ 336.00	\$ 1,352.40	
60		Roof Scupper W/ Stainless Steel Gravel Stainer	EA	5	0%	5	\$ 210.20	\$ 1,051.00	1.380	\$ 40.00	\$ 55.20	\$ 276.00	\$ 1,327.00	
61		UltraPly TPO Bonding Adhesive On Curb	LF	371	5%	390	\$ 2.25	\$ 876.49	0.030	\$ 40.00	\$ 1.20	\$ 467.46	\$ 1,343.95	
62		Ultra-Ply Walkway Pad	SF	288	5%	302	\$ 5.98	\$ 1,808.35	0.035	\$ 40.00	\$ 1.40	\$ 423.36	\$ 2,231.71	
63		Vepor Retarder By Lexsucu	SF	29394	5%	30864	\$ 0.35	\$ 10,802.30	0.008	\$ 40.00	\$ 0.32	\$ 9,876.38	\$ 20,678.68	
64		(P2) 2" Composite Metal Panel - Blue Skin	SF	239	5%	251	\$ 5.20	\$ 1,304.94	0.038	\$ 40.00	\$ 1.52	\$ 381.44	\$ 1,686.38	
65		(P1) 3/4" Exterior Grade Plywood - Void Space	SF	239	5%	251	\$ 1.42	\$ 356.35	0.026	\$ 40.00	\$ 1.04	\$ 260.99	\$ 617.34	
66		(P2) 2-3/4" Girts @ 16" O.C - 239 SF	LF	181	5%	190	\$ 4.20	\$ 798.21	0.032	\$ 40.00	\$ 1.28	\$ 243.26	\$ 1,041.47	
67		(P2) 2" XPS Rigid Insulation	SF	239	5%	251	\$ 2.15	\$ 538.76	0.030	\$ 40.00	\$ 1.20	\$ 301.14	\$ 839.90	
68		(P2) 1/2" Dens Glass Gold	SF	239	5%	251	\$ 1.20	\$ 301.14	0.022	\$ 40.00	\$ 0.88	\$ 220.84	\$ 521.98	
69	A2.31, A-8	(P3) 4" Rigid Insulation Outulation - 3/4" Void Space	SF	143	5%	150	\$ 7.25	\$ 1,088.59	0.052	\$ 40.00	\$ 2.08	\$ 312.31	\$ 1,400.90	
70		(P3) 3/4" Exterior Grade Plywood - Air Barrier	SF	143	5%	150	\$ 1.42	\$ 213.21	0.020	\$ 40.00	\$ 0.80	\$ 120.12	\$ 333.33	
71		(P3) 6" Metal Stud @ 16" O.C - 143 SF	LF	109	5%	114	\$ 2.85	\$ 326.18	0.025	\$ 40.00	\$ 1.00	\$ 114.45	\$ 440.63	
72		(P3) 2" XPS Rigid Insulation	SF	143	5%	150	\$ 2.15	\$ 322.82	0.030	\$ 40.00	\$ 1.			

86	Capped Cone Flashing	EA	2	0%	2	\$ 120.00	\$ 240.00	1.000	\$ 40.00	\$ 40.00	\$ 80.00	\$ 320.00
87	Gas Pipe, Electrical Work & Exhaust Duct Flashing	LF	13	5%	14	\$ 4.20	\$ 57.33	0.052	\$ 40.00	\$ 2.08	\$ 28.39	\$ 85.72
88	18" Curb Flashing	LF	371	5%	390	\$ 7.20	\$ 2,804.76	0.085	\$ 40.00	\$ 3.40	\$ 1,324.47	\$ 4,129.23
89	Flashing Around Roof Hatch	LF	14	5%	15	\$ 7.20	\$ 105.84	0.085	\$ 40.00	\$ 3.40	\$ 49.98	\$ 155.82
<b>Subtotal (Thermal &amp; Moisture Protection)</b>							<b>\$ 278,071</b>				<b>\$ 105,040</b>	<b>\$ 383,111</b>

**DIVISION 08- OPENINGS**

<b>Doors</b>												
90	(13'-0"x7'-0") Aluminum Door W/ Frame	EA	2	0%	2	\$ 3,368.00	\$ 6,736.00	8.250	\$ 40.00	\$ 330.00	\$ 660.00	\$ 7,396.00
91	(3'-0"x3'-0") Hollow Metal Door W/ PS Frame	EA	1	0%	1	\$ 525.20	\$ 525.20	1.880	\$ 40.00	\$ 75.20	\$ 75.20	\$ 600.40
92	(3'-2"x7'-0") Hollow Metal Door W/ PSI Frame	EA	5	0%	5	\$ 912.20	\$ 4,561.00	2.120	\$ 40.00	\$ 84.80	\$ 424.00	\$ 4,985.00
93	(3'-2"x7'-0") Hollow Metal Door W/ PS Frame	EA	23	0%	23	\$ 912.20	\$ 20,980.60	2.120	\$ 40.00	\$ 84.80	\$ 1,950.40	\$ 22,931.00
94	(6'-0"x8'-0") Hollow Metal Door W/ PS Frame	EA	2	0%	2	\$ 1,688.00	\$ 3,376.00	4.000	\$ 40.00	\$ 160.00	\$ 320.00	\$ 3,696.00
95	(8'-0"x10'-0") Steel Door W/ Frame	EA	1	0%	1	\$ 2,865.00	\$ 2,865.00	6.320	\$ 40.00	\$ 252.80	\$ 252.80	\$ 3,117.80
<b>Door Hardware</b>												
96	"C4" Recessd Magnetic Hold Open Device Manuf: Dorma Model: EM500 U	EA	2	0%	2	\$ 235.62	\$ 471.24	0.680	\$ 40.00	\$ 27.20	\$ 54.40	\$ 525.64
97	"D1" Door Sweep Manuf: Zero Model: 339 Sill	EA	5	0%	5	\$ 41.20	\$ 206.00	0.400	\$ 40.00	\$ 16.00	\$ 80.00	\$ 286.00
98	"K1" 8 Inch Wide Kick Plate	EA	32	0%	32	\$ 29.65	\$ 948.80	0.388	\$ 40.00	\$ 15.52	\$ 496.64	\$ 1,445.44
99	"L1" Best 7-Pin Mortise Cylinder #1E74-C4-RP3-626 Manuf: Santley Model: 1E	EA	4	0%	4	\$ 132.20	\$ 528.80	0.485	\$ 40.00	\$ 19.40	\$ 77.60	\$ 606.40
100	"L1" Best 7-Pin Mortise Cylinder Manuf: Stanely Model: 1E	EA	2	0%	2	\$ 132.20	\$ 264.40	0.485	\$ 40.00	\$ 19.40	\$ 38.80	\$ 303.20
101	"L10" Best 9K-3-7-D-15H-626 Manuf: Santley Model: 9K	EA	2	0%	2	\$ 1,003.98	\$ 2,007.96	1.620	\$ 40.00	\$ 64.80	\$ 129.60	\$ 2,137.56
102	"L3" Best #93K-7D-15D-53-626 Manuf: Santley Model: 9K	EA	15	0%	15	\$ 947.85	\$ 14,217.75	1.360	\$ 40.00	\$ 54.40	\$ 816.00	\$ 15,033.75
103	"L5" Mortise Cylinder - Best #1E74 C181-RP3-626-C Manuf: Stanely Model: 1E	EA	1	0%	1	\$ 132.20	\$ 132.20	0.485	\$ 40.00	\$ 19.40	\$ 19.40	\$ 151.60
104	"L7" Mortise #45H-7-T-15H-626-VIN Manuf: Santley Model: (N/G)	EA	2	0%	2	\$ 977.85	\$ 1,955.70	1.230	\$ 40.00	\$ 49.20	\$ 98.40	\$ 2,054.10
105	"L9" Mortise #45H-7-T-15H-626-Dummy Manuf: Santley Model: (N/G)	EA	1	0%	1	\$ 785.62	\$ 785.62	0.952	\$ 40.00	\$ 38.08	\$ 38.08	\$ 823.70
106	"P1" Battery Powered Alarmed Rim Exit Device Manuf: Detex Value Series Model: V40xEB	EA	4	0%	4	\$ 598.65	\$ 2,394.60	0.785	\$ 40.00	\$ 31.40	\$ 125.60	\$ 2,520.20
107	"P2" (4"x6") Plus Plate Manuf: CBH Model: 923	EA	3	0%	3	\$ 92.32	\$ 276.96	0.452	\$ 40.00	\$ 18.08	\$ 54.24	\$ 331.20
108	"P3" Battery Powered Alarmed Rim Exit Device W/ Outside Key Control Manuf: Detex Valu Series Model: V40xEB	EA	1	0%	1	\$ 638.65	\$ 638.65	0.865	\$ 40.00	\$ 34.60	\$ 34.60	\$ 673.25
109	"P5" (24"x20") Push Plate Manuf: CBH Model: 923	EA	2	0%	2	\$ 120.32	\$ 240.64	0.725	\$ 40.00	\$ 29.00	\$ 58.00	\$ 298.64
110	"P5" (24"x20") Push Plate Manuf: CBH Model: 923	EA	22	0%	22	\$ 120.32	\$ 2,647.04	0.725	\$ 40.00	\$ 29.00	\$ 638.00	\$ 3,285.04
111	"P6" Battery Powered Alarmed Exit Device Manuf: Detex Model: EAX-500	EA	2	0%	2	\$ 287.52	\$ 575.04	0.825	\$ 40.00	\$ 33.00	\$ 66.00	\$ 641.04
112	"S1" Low Profile Demond Door Stop Manuf: GSH Model: 200	EA	14	0%	14	\$ 58.62	\$ 820.68	0.520	\$ 40.00	\$ 20.80	\$ 291.20	\$ 1,111.88
113	"T1" Treshold Manuf: Zero Model: 655A A1	EA	5	0%	5	\$ 61.85	\$ 309.25	0.425	\$ 40.00	\$ 17.00	\$ 85.00	\$ 394.25
114	"W1" WeatherStrip (3'-2"x7'-0") Manuf: Zero Model: 140 Head And Jamb	EA	6	0%	6	\$ 58.00	\$ 348.00	0.500	\$ 40.00	\$ 20.00	\$ 120.00	\$ 468.00
<b>Windows</b>												
115	"W1" (13'-6"x10'-8") Aluminum Glass Window / Frame	EA	1	0%	1	\$ 5,934.65	\$ 5,934.65	13.850	\$ 40.00	\$ 554.00	\$ 554.00	\$ 6,488.65
116	"W10" (15'-2"x10'-8") Aluminum Glass Window / Frame	EA	1	0%	1	\$ 6,702.08	\$ 6,702.08	15.000	\$ 40.00	\$ 600.00	\$ 600.00	\$ 7,302.08
117	"W2" (16'-2"x10'-8") Aluminum Glass Window / Frame	EA	1	0%	1	\$ 7,176.90	\$ 7,176.90	17.250	\$ 40.00	\$ 690.00	\$ 690.00	\$ 7,866.90
118	"W3" (21'-2'-1/4"x10'-8") Aluminum Glass Window / Frame	EA	1	0%	1	\$ 9,341.59	\$ 9,341.59	21.200	\$ 40.00	\$ 848.00	\$ 848.00	\$ 10,189.59
119	"W4" (10'-9"x10'-8") Aluminum Glass Window / Frame	EA	1	0%	1	\$ 4,850.06	\$ 4,850.06	9.980	\$ 40.00	\$ 399.20	\$ 399.20	\$ 5,249.26
120	"W5" (7'-7"x10'-8") Aluminum Glass Window / Frame	EA	1	0%	1	\$ 3,428.91	\$ 3,428.91	7.250	\$ 40.00	\$ 290.00	\$ 290.00	\$ 3,718.91
121	"W6" (1'-4"x1'-6") Aluminum Glass Window / Frame	EA	1	0%	1	\$ 150.00	\$ 150.00	1.000	\$ 40.00	\$ 40.00	\$ 40.00	\$ 190.00
122	"W6" (7'-4"x4'-0") Aluminum Glass Window / Frame	EA	1	0%	1	\$ 1,216.78	\$ 1,216.78	4.880	\$ 40.00	\$ 195.20	\$ 195.20	\$ 1,411.98
123	"W7" (2'-10'-1/2"x13'-1/2") Aluminum Glass Window / Frame	EA	1	0%	1	\$ 1,583.11	\$ 1,583.11	5.250	\$ 40.00	\$ 210.00	\$ 210.00	\$ 1,793.11
124	"W8" (15'-0"x5'-0") Aluminum Glass Window / Frame	EA	1	0%	1	\$ 3,090.00	\$ 3,090.00	8.650	\$ 40.00	\$ 346.00	\$ 346.00	\$ 3,436.00
<b>Subtotal (Openings)</b>							<b>\$ 112,287</b>				<b>\$ 11,176</b>	<b>\$ 123,464</b>

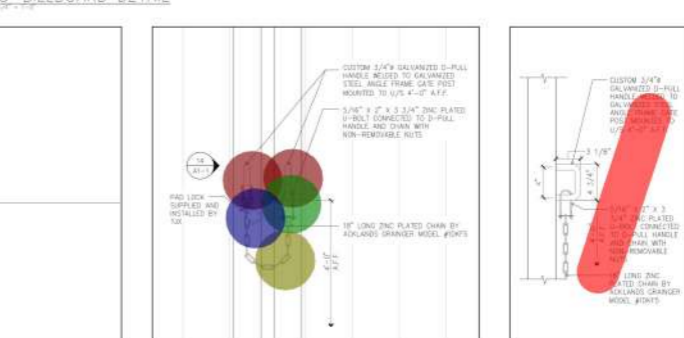
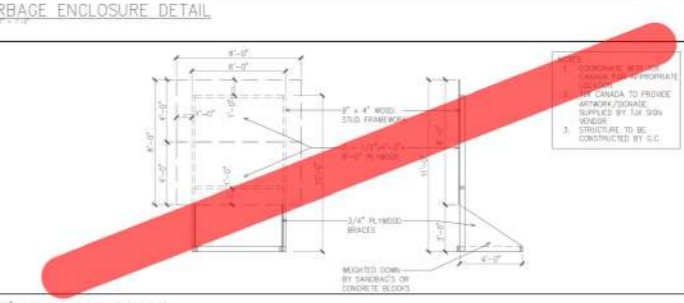
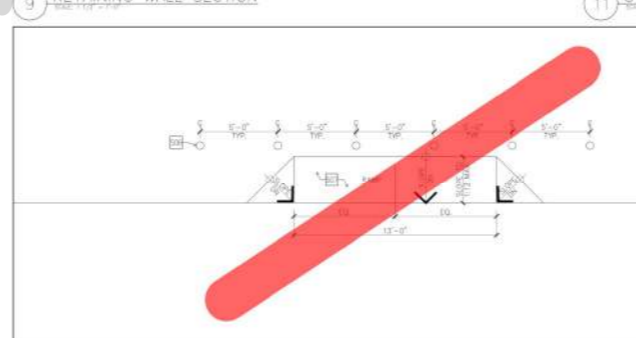
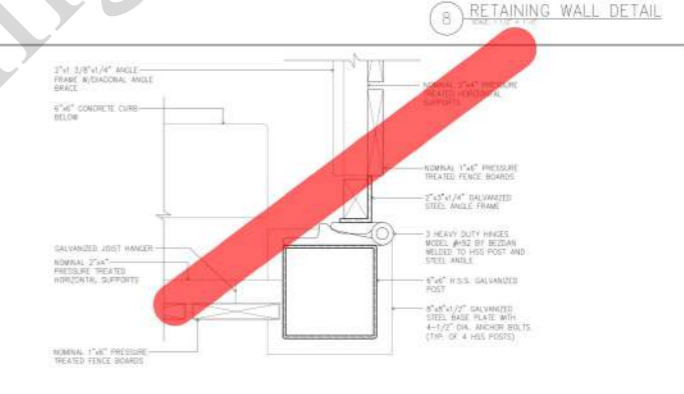
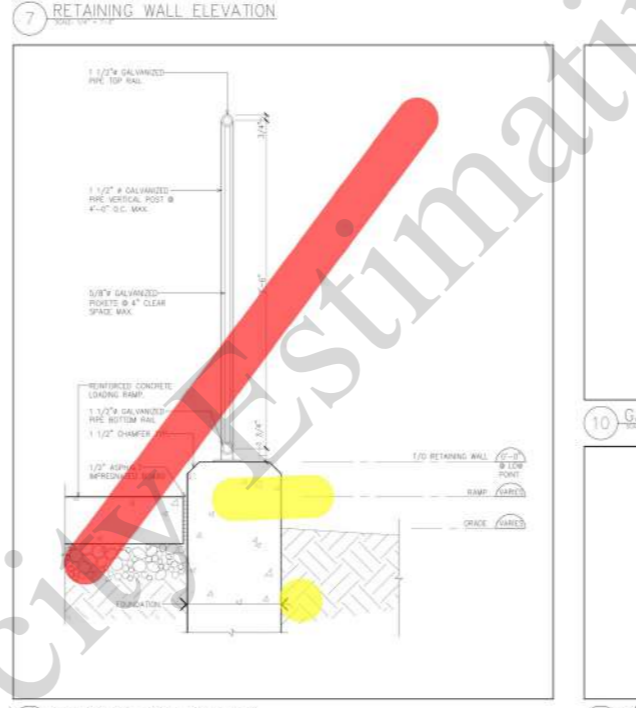
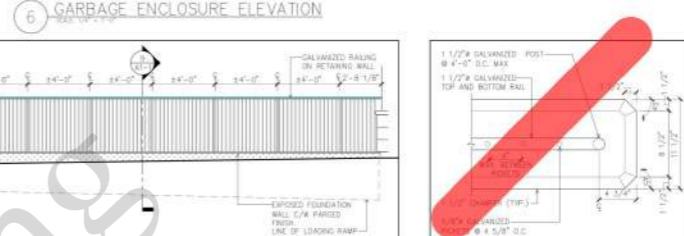
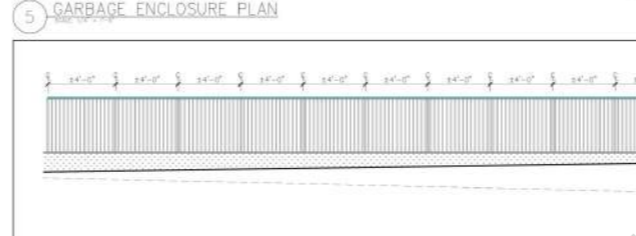
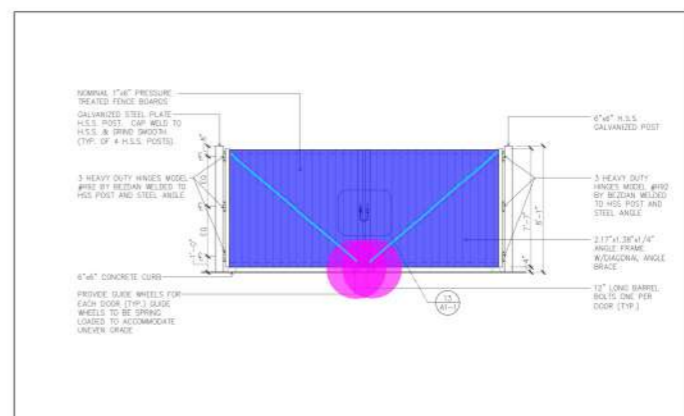
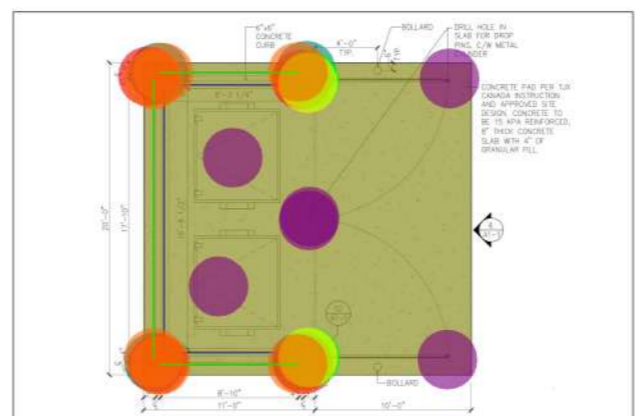
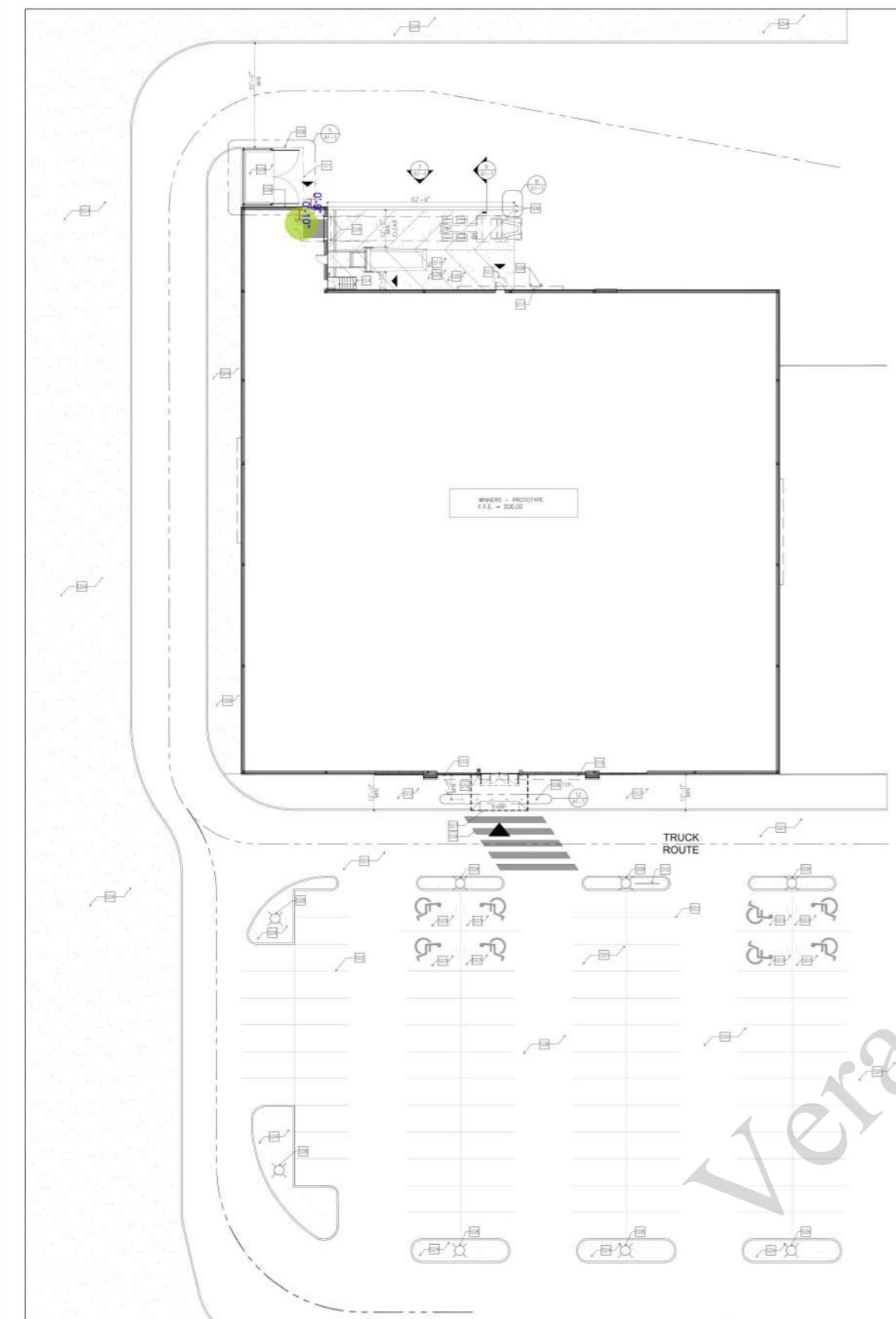
**DIVISION 09- FINISHES**

<b>Parapet Wall Framing</b>												
<b>(6") Parapet Wall As; (556 LF, 4'-6" H)</b>												
125	(1/2") Exterior Grade Plywood	SF	2502	5%	2627	\$ 1.42	\$ 3,730.48	0.022	\$ 40.00	\$ 0.88	\$ 2,311.85	\$ 6,042.33
126	(6") Metal Studs @ 16" O.C. (279 EA, 1256 LF)	SF	2502	5%	2627	\$ 2.68	\$ 7,040.63	0.026	\$ 40.00	\$ 1.04	\$ 2,732.18	\$ 9,772.81
127	R-20 Batt Insulation	SF	2502	5%	2627	\$ 0.98	\$ 2,574.56	0.012	\$ 40.00	\$ 0.48	\$ 1,261.01	\$ 3,835.57
128	Air Barrier	SF	2502	5%	2627	\$ 0.42	\$ 1,103.38	0.008	\$ 40.00	\$ 0.32	\$ 840.67	\$ 1,944.05
129	(6") Metal Runner	LF	556	5%	584	\$ 2.68	\$ 1,564.58	0.026	\$ 40.00	\$ 1.04	\$ 607.15	\$ 2,171.74
130	(6") Deflection Track	LF	556	5%	584	\$ 2.68	\$ 1,564.58	0.026	\$ 40.00	\$ 1.04	\$ 607.15	\$ 2,171.74
131	Sealant (As Required)	LF	1112	5%	1168	\$ 0.45	\$ 525.42	0.012	\$ 40.00	\$ 0.48	\$ 560.45	\$ 1,085.87
<b>(6") P3 Parapet Wall As; (48 LF, 4'-6" H)</b>												
132	(1/2") Exterior Grade Plywood	SF	216	5%	227	\$ 1.42	\$ 322.06	0.022	\$ 40.00	\$ 0.88	\$ 199.58	\$ 521.64
133	(6") Metal Studs @ 16" O.C. (37 EA, 167 LF)	SF	216	5%	227	\$ 2.68	\$ 607.82	0.026	\$ 40.00	\$ 1.04	\$ 235.87	\$ 843.70
134	2" XPS Rigid Insulation	SF	216	5%	227	\$ 2.15	\$ 487.62	0.030	\$ 40.00	\$ 1.20	\$ 272.16	\$ 759.78
135	1/2" Dens Glass Gold	SF	216	5%	227	\$ 1.42	\$ 322.06	0.022	\$ 40.00	\$ 0.88	\$ 199.58	\$ 521.64
136	(6") Metal Runner	LF	48	5%	50	\$ 2.68	\$ 135.07	0.026	\$ 40.00	\$ 1.04	\$ 52.42	\$ 187.49
137	(6") Deflection Track	LF	48	5%	50	\$ 2.68	\$ 135.07	0.026	\$ 40.00	\$ 1.04	\$ 52.42	\$ 187.49
138	Sealant (As Required)	LF	96	5%	101	\$ 0.45	\$ 45.36	0.012	\$ 40.00	\$ 0.48	\$ 48.38	\$ 93.74
<b>(8") P1,P2,P4 Parapet Wall As; (170 LF, 4'-6" H)</b>												
139	(1/2") Exterior Grade Plywood	SF	765	5%	803	\$ 1.42	\$ 1,140.62	0.022	\$ 40.00	\$ 0.88	\$ 706.86	\$ 1,847.48
140	(8") Metal Studs @ 16" O.C. (165 EA, 742 LF)	SF	765	5%	803	\$ 3.38	\$ 2,714.99	0.028	\$ 40.00	\$ 1.12	\$ 899.64	\$ 3,614.63
141	R-20 Batt Insulation	SF	765	5%	803	\$ 0.98	\$ 787.19	0.012	\$ 40.00	\$ 0.48	\$ 385.56	\$ 1,172.75
142	Air Barrier	SF	765	5%	803	\$ 0.42	\$ 337.37	0.008	\$ 40.00	\$ 0.32	\$ 257.04	\$ 594.41
143	(8") Metal Runner	LF	170	5%	179	\$ 3.38	\$ 603.33	0.028	\$ 40.00	\$ 1.12	\$ 199.92	\$ 803.25
144	(8") Deflection Track	LF	170	5%	179	\$ 3.38	\$ 603.33	0.028	\$ 40.00	\$ 1.12	\$ 199.92	\$ 803.25
145	Sealant (As Required)	LF	340	5%	357	\$ 0.45	\$ 160.65	0.012	\$ 40.00	\$ 0.48	\$ 171.36	\$ 332.01
<b>Subtotal (Finishes)</b>							<b>\$ 26,506</b>				<b>\$ 12,801</b>	<b>\$ 39,307</b>

										<b>PROJECTED COST</b>	<b>\$ 1,417,042</b>	
										<b>INSURANCE</b>	<b>4%</b>	<b>\$ 56,682</b>
										<b>CONTINGENCY</b>	<b>8%</b>	<b>\$ 113,363</b>
										<b>OVERHEAD AND PROFIT</b>	<b>20%</b>	<b>\$ 283,408</b>
										<b>TAX</b>	<b>13.00%</b>	<b>\$ 126,827</b>
										<b>SUGGESTED BID</b>	<b>\$ 1,997,323</b>	

**Note:**  
1. Please verify the equipment's and their prices with owner.  
2. Online sources are used for pricing.  
3. Prices can vary depending upon field conditions.

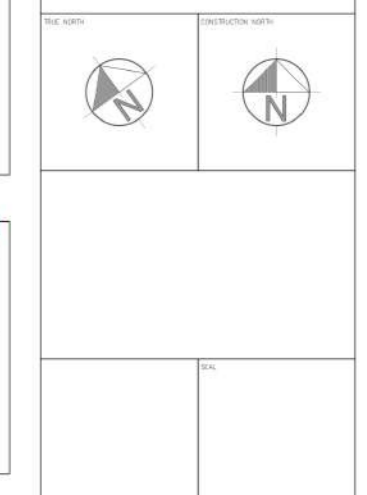




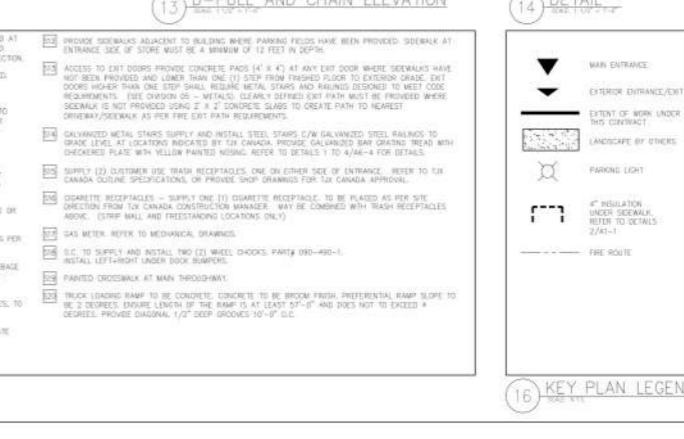
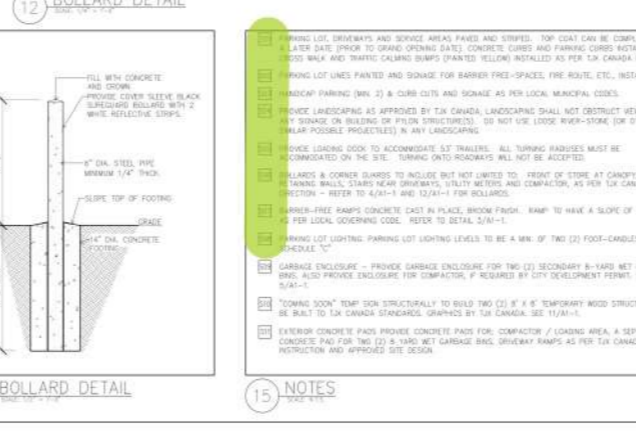
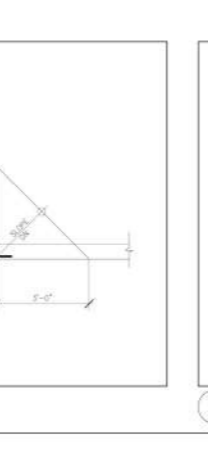
ISSUED			
No.	DESCRIPTION	DATE	BY
01	ISSUED FOR PROTOTYPE RELEASE	11/04/19	

REVISION			
No.	DESCRIPTION	DATE	BY

NOTES



- 15 KPA Reinforced 8" Thick Concrete Pad ..... & 4" Granular Fill 420.0 SQ FT
- 6"x6" Concrete Curb 34.3 FT
- Metal Cylinder Drop Pin In Slab 4.0 EA
- 8"x8"x1/2" Galvanized Steel Base Plate W/ (4) 1/2" Dia Anchor Bolts 4.0 EA
- 6"x6" H.S.S Galvanized Column (8'-0" H) 4.0 EA
- 3 Heavy Duty Hinges .....6 EA 2.0 EA
- 2"x3"x1/4" Gavanized Steel Angle Frame 2.0 EA
- 1"x6" Pressure Treated Fence Board 129.3 SQ FT
- Guide Wheel For Door 2.0 EA
- 2.17"x1.38"x1/4" Angle Brace 21.6 FT
- 3/4" Dia Galvanized D-Pull Handle 2.0 EA
- 5/16" x2"x3 3/4" Zinc Plated U-Bolt 1.0 EA
- 18" Long Zinc Plated Chain 1.0 EA
- Pad Lock Supply And Installed By TJX 2.0 EA
- Trash Enclosure 2.0 EA
- (3'-6" H) Galvanized Railing & Footing Concrete (1'-6"x3'-0" H) 63.1 FT
- Galvanized Joist Hanger 6.0 EA
- 2"x4" Pressure Treated Horizontal Support (8'-0" H) 36.0 FT



WINNERS CITY, PROVINCE

TJX CANADA

WINNERS CITY, PROVINCE

SITE PLAN & DETAILS

LOCATION: STREET NAME, CITY, PROVINCE

DATE: 000

SCALE: AS NOTED

PROJECT NO: 000

DATE: 000

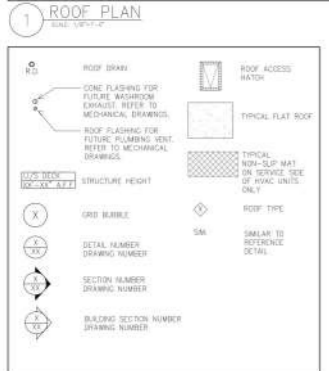
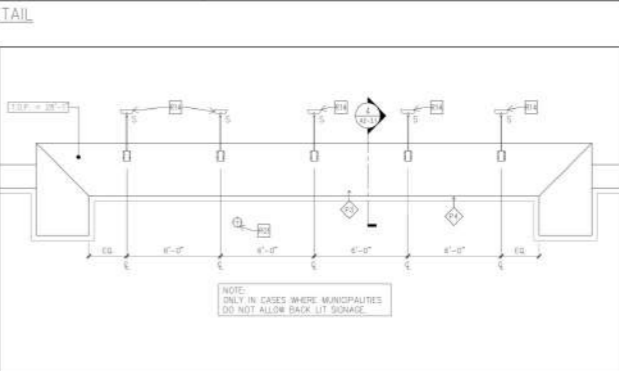
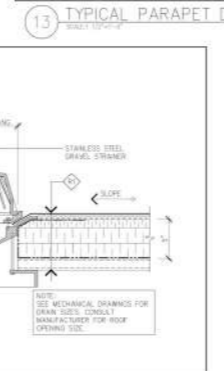
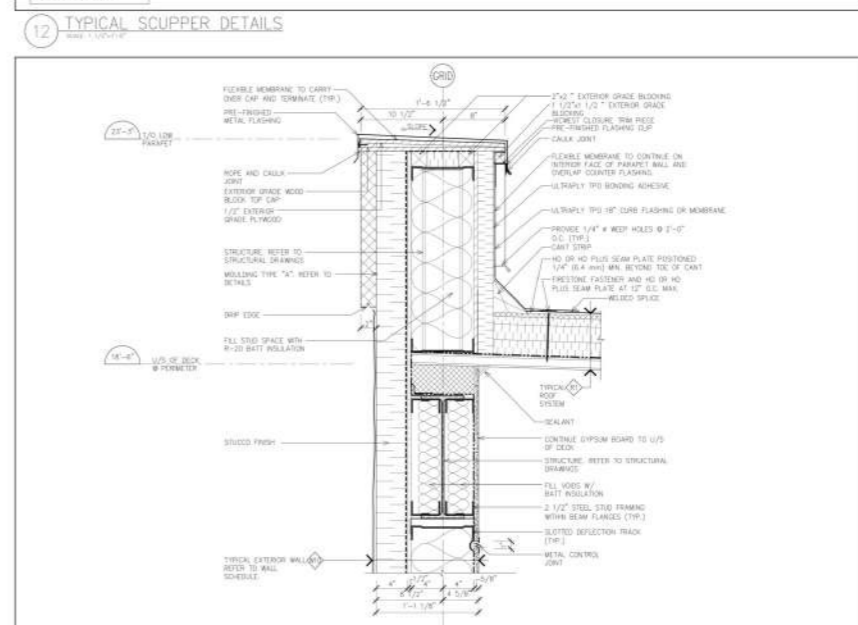
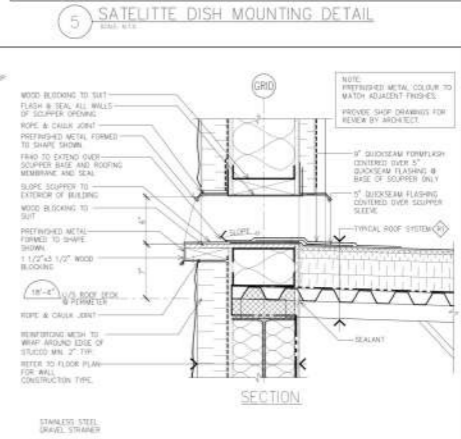
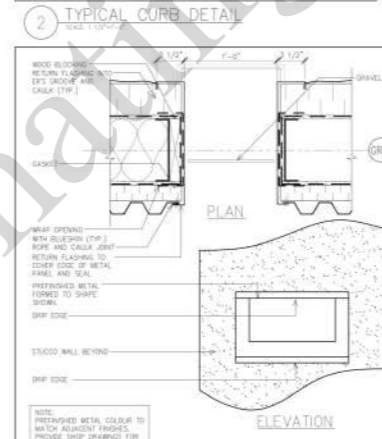
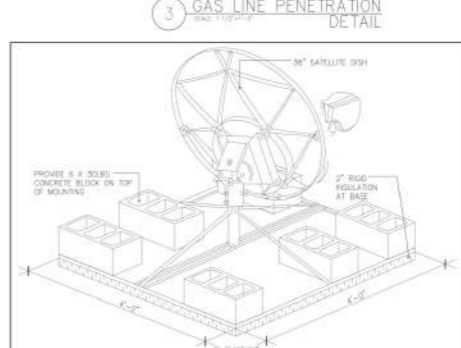
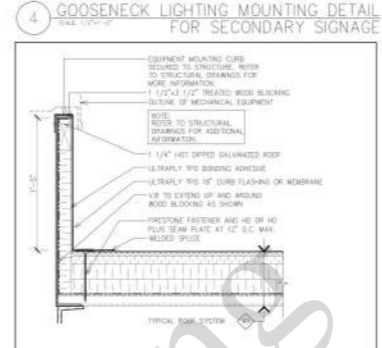
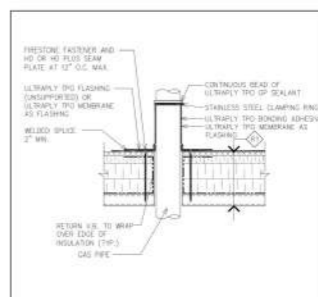
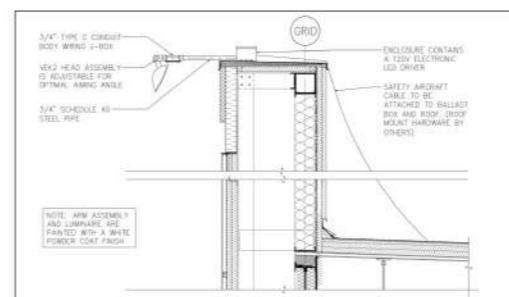
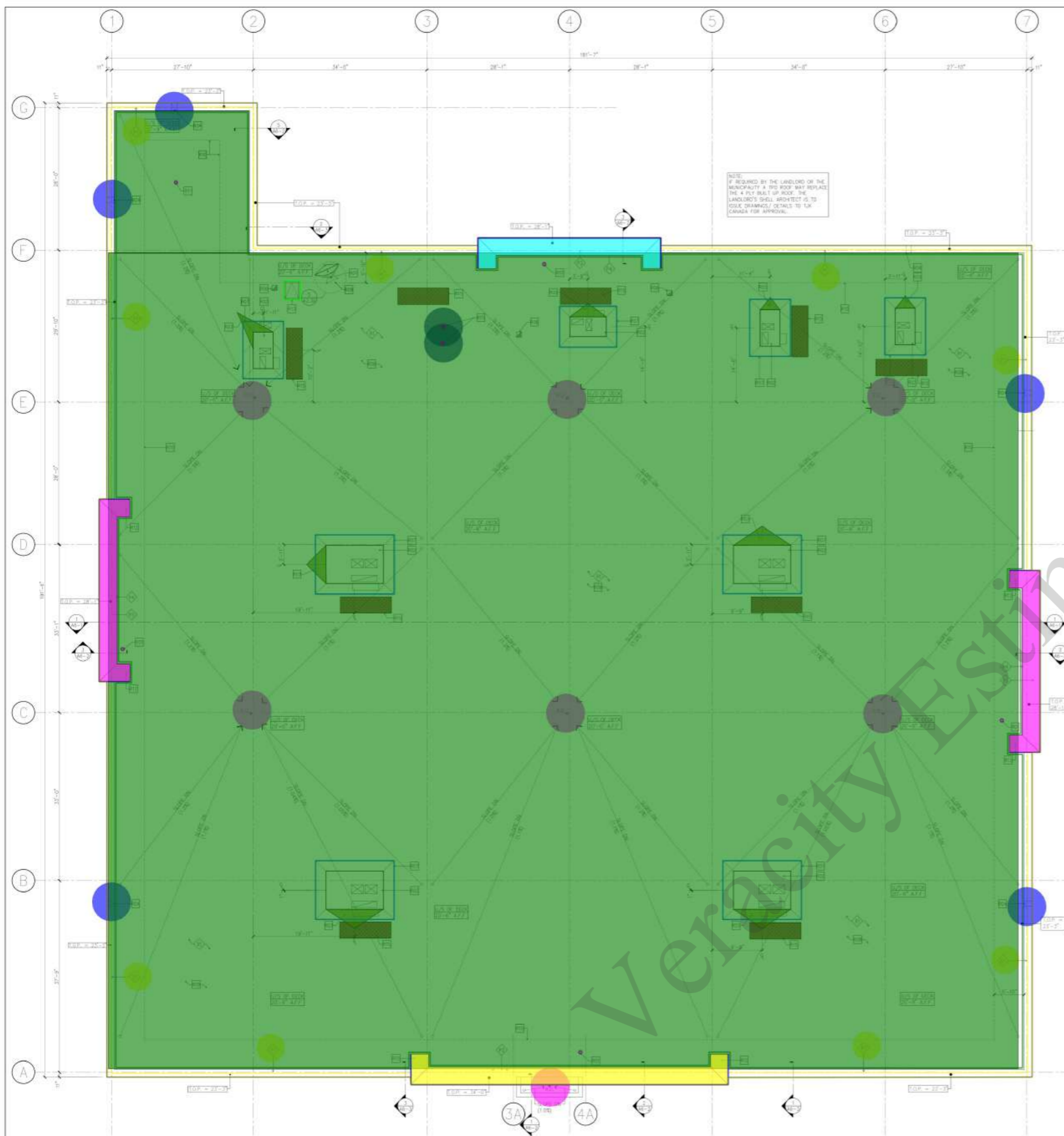
BY: [Signature]

Veracity Estimating









**7 ROOF PLAN NOTES**

- 1. PITCH POCKET FOR ELECTRICAL WORK TO DATA ROOM - REFER TO GEOMETRICAL DRAWINGS.
- 2. HVAC UNIT - REFER TO MECHANICAL DRAWINGS.
- 3. SITE CONSTRUCTED CURCHET.
- 4. ROOF SCUPPER - REFER TO 12/A2-31.
- 5. CARPED CONE FLASHING FOR FUTURE RADIUM ROOM EXHAUST AND CAPPED CONE FLASHING FOR FUTURE PLUMBING UNIT. REFER TO MECHANICAL DRAWINGS.
- 6. LOCATION OF EXHAUST FAN - REFER TO MECHANICAL DRAWINGS.
- 7. HVAC SCREEN - REFER TO MECHANICAL DRAWINGS FOR SPECIFICATION AND ADDITIONAL INFORMATION.
- 8. INSTALL STEEL BURGLAR BARS TO PROTECT ROOF PENETRATION LARGER THAN 12\"/>

**8 PARAPET TYPES**

- 1. GABLET CONSTRUCTION:
  - 4\"/>
- 2. PARAPET CONSTRUCTION:
  - 2\"/>

**9 ROOF TYPES**

- 1. ROOF CONSTRUCTION:
  - FLASHING TO BE MECHANICALLY FASTENED SYSTEM.
  - 1\"/>

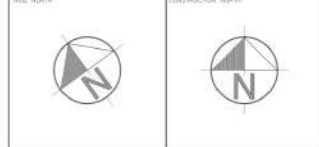
**10 ROOF DRAIN DETAIL**

NOTE: SEE MECHANICAL DRAWINGS FOR DRAIN USES, CONSULT MANUFACTURER FOR ROOF OPENING SIZE.

ISSUED		
No.	DESCRIPTION	DATE BY
01	ISSUED FOR PROTOTYPE RELEASE	11/04/19

REVISION		
No.	DESCRIPTION	DATE BY

NOTES



WINNERS  
CITY, PROVINCE

TJX CANADA

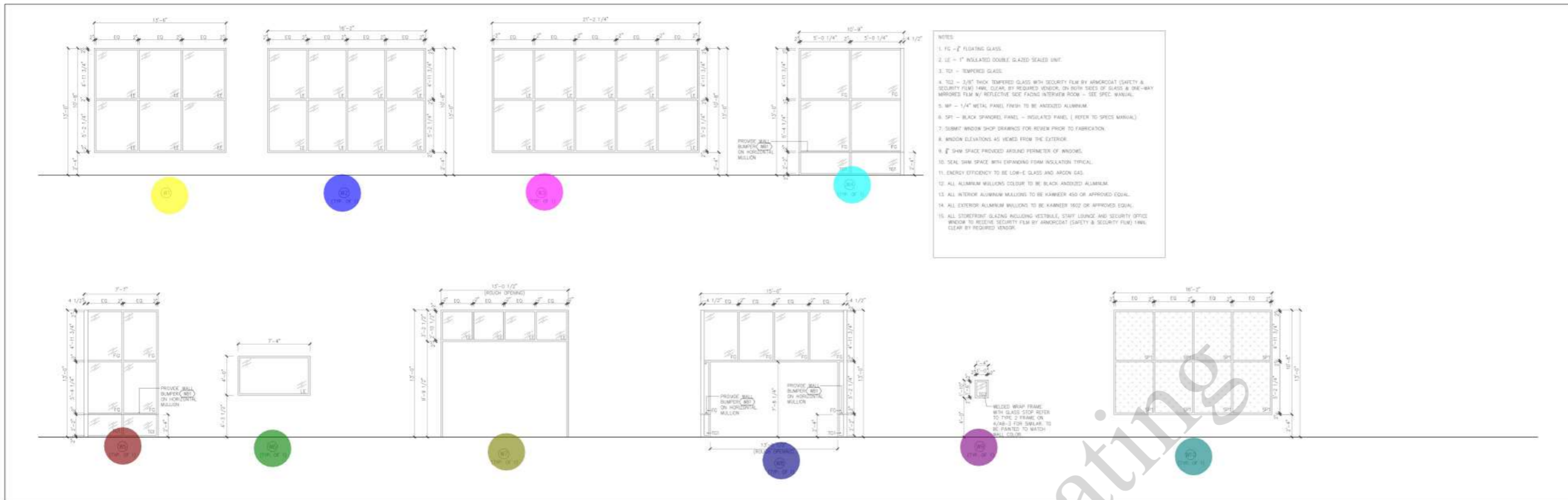
WINNERS CITY, PROVINCE

ROOF PLAN (TPO ALTERNATIVE ROOFING)

DATE: 11/04/19  
PROJECT NO: 000  
BY: [Signature]

WINNERS, LOCATION, CITY, PROVINCE





1 WINDOW SCHEDULE

ROOM	FLOOR	WALLS (PROJECT NORTH IS REFERENCE)												CEILING	REMARKS		
		EAST				WEST				NORTH							
NO.	NAME	MATL.	FIN.	SPR.	FIN.	MATL.	FIN.	SPR.	FIN.	MATL.	FIN.	SPR.	FIN.	MATL.	FIN.	SPR.	
100	VESTIBULE	CERAMIC TILE	SEE A2-1	SEE A2-1	SEE A2-1	SEE A2-1	SEE A2-1	SEE A2-1	SEE A2-1	SEE A2-1	SEE A2-1	SEE A2-1	SEE A2-1	SEE A2-1	SEE A2-1	SEE A2-1	13'-0"
101	SKIES AREA	WVL	SEE A2-4	SEE A2-4	SEE A2-4	SEE A2-4	SEE A2-4	SEE A2-4	SEE A2-4	SEE A2-4	SEE A2-4	SEE A2-4	SEE A2-4	SEE A2-4	SEE A2-4	SEE A2-4	14'-0"
102	PUBLIC CORRIDOR	RESIDENT TILE	SEE A3-1	SEE A3-1	SEE A3-1	SEE A3-1	SEE A3-1	SEE A3-1	SEE A3-1	SEE A3-1	SEE A3-1	SEE A3-1	SEE A3-1	SEE A3-1	SEE A3-1	SEE A3-1	9'-0"
103	WOMEN'S WASHROOM	CERAMIC TILE	SEE A3-2	SEE A3-2	SEE A3-2	SEE A3-2	SEE A3-2	SEE A3-2	SEE A3-2	SEE A3-2	SEE A3-2	SEE A3-2	SEE A3-2	SEE A3-2	SEE A3-2	SEE A3-2	8'-0"
104	MEN'S WASHROOM	CERAMIC TILE	SEE A3-2	SEE A3-2	SEE A3-2	SEE A3-2	SEE A3-2	SEE A3-2	SEE A3-2	SEE A3-2	SEE A3-2	SEE A3-2	SEE A3-2	SEE A3-2	SEE A3-2	SEE A3-2	8'-0"
105	ON-BOARD FAMILY / H.O. WASHROOM	CERAMIC TILE	SEE A3-2	SEE A3-2	SEE A3-2	SEE A3-2	SEE A3-2	SEE A3-2	SEE A3-2	SEE A3-2	SEE A3-2	SEE A3-2	SEE A3-2	SEE A3-2	SEE A3-2	SEE A3-2	9'-0"
106	STAFF CORRIDOR	RESIDENT TILE	SEE A3-1	SEE A3-1	SEE A3-1	SEE A3-1	SEE A3-1	SEE A3-1	SEE A3-1	SEE A3-1	SEE A3-1	SEE A3-1	SEE A3-1	SEE A3-1	SEE A3-1	SEE A3-1	9'-0"
107	CASH OFFICE	RESIDENT TILE	SEE A3-1	SEE A3-1	SEE A3-1	SEE A3-1	SEE A3-1	SEE A3-1	SEE A3-1	SEE A3-1	SEE A3-1	SEE A3-1	SEE A3-1	SEE A3-1	SEE A3-1	SEE A3-1	9'-0"
108	ASSISTANT MANAGER OFFICE	RESIDENT TILE	SEE A3-1	SEE A3-1	SEE A3-1	SEE A3-1	SEE A3-1	SEE A3-1	SEE A3-1	SEE A3-1	SEE A3-1	SEE A3-1	SEE A3-1	SEE A3-1	SEE A3-1	SEE A3-1	9'-0"
109	STORE MANAGER OFFICE	RESIDENT TILE	SEE A3-1	SEE A3-1	SEE A3-1	SEE A3-1	SEE A3-1	SEE A3-1	SEE A3-1	SEE A3-1	SEE A3-1	SEE A3-1	SEE A3-1	SEE A3-1	SEE A3-1	SEE A3-1	9'-0"
110	STAFF LOUNGE	RESIDENT TILE	SEE A3-1	SEE A3-1	SEE A3-1	SEE A3-1	SEE A3-1	SEE A3-1	SEE A3-1	SEE A3-1	SEE A3-1	SEE A3-1	SEE A3-1	SEE A3-1	SEE A3-1	SEE A3-1	9'-0"
111	STAFF LOCKERS	RESIDENT TILE	SEE A3-1	SEE A3-1	SEE A3-1	SEE A3-1	SEE A3-1	SEE A3-1	SEE A3-1	SEE A3-1	SEE A3-1	SEE A3-1	SEE A3-1	SEE A3-1	SEE A3-1	SEE A3-1	9'-0"
112	FITTING ROOM FIBER	RESIDENT TILE	SEE A3-1	SEE A3-1	SEE A3-1	SEE A3-1	SEE A3-1	SEE A3-1	SEE A3-1	SEE A3-1	SEE A3-1	SEE A3-1	SEE A3-1	SEE A3-1	SEE A3-1	SEE A3-1	12'-0"
113	ADJ. DOUBLE FITTING ROOM	RESIDENT TILE	SEE A3-1	SEE A3-1	SEE A3-1	SEE A3-1	SEE A3-1	SEE A3-1	SEE A3-1	SEE A3-1	SEE A3-1	SEE A3-1	SEE A3-1	SEE A3-1	SEE A3-1	SEE A3-1	10'-0"
114	UNSEX FITTING ROOM	RESIDENT TILE	SEE A3-1	SEE A3-1	SEE A3-1	SEE A3-1	SEE A3-1	SEE A3-1	SEE A3-1	SEE A3-1	SEE A3-1	SEE A3-1	SEE A3-1	SEE A3-1	SEE A3-1	SEE A3-1	12'-0"
115	SECURITY OFFICE	RESIDENT TILE	SEE A3-1	SEE A3-1	SEE A3-1	SEE A3-1	SEE A3-1	SEE A3-1	SEE A3-1	SEE A3-1	SEE A3-1	SEE A3-1	SEE A3-1	SEE A3-1	SEE A3-1	SEE A3-1	9'-0"
116	STOCK ROOM	CONCRETE	SEE A3-1	SEE A3-1	SEE A3-1	SEE A3-1	SEE A3-1	SEE A3-1	SEE A3-1	SEE A3-1	SEE A3-1	SEE A3-1	SEE A3-1	SEE A3-1	SEE A3-1	SEE A3-1	NO FINISH
117	UTILITY ROOM	CERAMIC TILE	SEE A3-1	SEE A3-1	SEE A3-1	SEE A3-1	SEE A3-1	SEE A3-1	SEE A3-1	SEE A3-1	SEE A3-1	SEE A3-1	SEE A3-1	SEE A3-1	SEE A3-1	SEE A3-1	NO FINISH
118	ELECTRICAL ROOM	CONCRETE	SEE A3-1	SEE A3-1	SEE A3-1	SEE A3-1	SEE A3-1	SEE A3-1	SEE A3-1	SEE A3-1	SEE A3-1	SEE A3-1	SEE A3-1	SEE A3-1	SEE A3-1	SEE A3-1	NO FINISH
119	DISTRICT MANAGER OFFICE	RESIDENT TILE	SEE A3-1	SEE A3-1	SEE A3-1	SEE A3-1	SEE A3-1	SEE A3-1	SEE A3-1	SEE A3-1	SEE A3-1	SEE A3-1	SEE A3-1	SEE A3-1	SEE A3-1	SEE A3-1	9'-0"
120	DISTRICT COORDINATOR OFFICE	RESIDENT TILE	SEE A3-1	SEE A3-1	SEE A3-1	SEE A3-1	SEE A3-1	SEE A3-1	SEE A3-1	SEE A3-1	SEE A3-1	SEE A3-1	SEE A3-1	SEE A3-1	SEE A3-1	SEE A3-1	9'-0"
121	WINNERS DATA ROOM	CONCRETE	SEE A3-1	SEE A3-1	SEE A3-1	SEE A3-1	SEE A3-1	SEE A3-1	SEE A3-1	SEE A3-1	SEE A3-1	SEE A3-1	SEE A3-1	SEE A3-1	SEE A3-1	SEE A3-1	NO FINISH
122	INTERVIEW ROOM	RESIDENT TILE	SEE A3-1	SEE A3-1	SEE A3-1	SEE A3-1	SEE A3-1	SEE A3-1	SEE A3-1	SEE A3-1	SEE A3-1	SEE A3-1	SEE A3-1	SEE A3-1	SEE A3-1	SEE A3-1	11'-0"
123	WINNERS SPRINKLER ROOM	CONCRETE	SEE A3-1	SEE A3-1	SEE A3-1	SEE A3-1	SEE A3-1	SEE A3-1	SEE A3-1	SEE A3-1	SEE A3-1	SEE A3-1	SEE A3-1	SEE A3-1	SEE A3-1	SEE A3-1	NO FINISH
124	DLFM OFFICE	RESIDENT TILE	SEE A3-1	SEE A3-1	SEE A3-1	SEE A3-1	SEE A3-1	SEE A3-1	SEE A3-1	SEE A3-1	SEE A3-1	SEE A3-1	SEE A3-1	SEE A3-1	SEE A3-1	SEE A3-1	9'-0"
125	FAMILY H.O. WASHROOM	CERAMIC TILE	SEE A3-2	SEE A3-2	SEE A3-2	SEE A3-2	SEE A3-2	SEE A3-2	SEE A3-2	SEE A3-2	SEE A3-2	SEE A3-2	SEE A3-2	SEE A3-2	SEE A3-2	SEE A3-2	9'-0"
126	TRAINING ROOM	RESIDENT TILE	SEE A3-1	SEE A3-1	SEE A3-1	SEE A3-1	SEE A3-1	SEE A3-1	SEE A3-1	SEE A3-1	SEE A3-1	SEE A3-1	SEE A3-1	SEE A3-1	SEE A3-1	SEE A3-1	9'-0"
127	PRIVACY ROOM	RESIDENT TILE	SEE A3-1	SEE A3-1	SEE A3-1	SEE A3-1	SEE A3-1	SEE A3-1	SEE A3-1	SEE A3-1	SEE A3-1	SEE A3-1	SEE A3-1	SEE A3-1	SEE A3-1	SEE A3-1	9'-0"

ROOM FINISH SCHEDULE

- "W1" (13'-6"x10'-8") Aluminum Glass Window / Frame 1.0 EA
- "W2" (16'-2"x10'-8") Aluminum Glass Window / Frame 1.0 EA
- "W3" (21'-2-1/4"x10'-8") Aluminum Glass Window / Frame 1.0 EA
- "W4" (10'-9"x10'-8") Aluminum Glass Window / Frame 1.0 EA
- "W5" (7'-7"x10'-8") Aluminum Glass Window / Frame 1.0 EA
- "W6" (7'-4"x4'-0") Aluminum Glass Window / Frame 1.0 EA
- "W7" (2'-10-1/2"x13'-1/2") Aluminum Glass Window / Fr... 1.0 EA
- "W8" (15'-0"x5'-0") Aluminum Glass Window / Frame 1.0 EA
- "W6" (1'-4"x1'-6") Aluminum Glass Window / Frame 1.0 EA
- "W10" (15'-2"x10'-8") Aluminum Glass Window / Frame 1.0 EA

ISSUED

No.	DESCRIPTION	DATE	BY
01	ISSUED FOR 2019 PROTOTYPE REVIEW 1	25/06/19	

REVISION

No.	DESCRIPTION	DATE	BY

NOTES

THE DRAWINGS ARE NOT TO BE SCALE. THE DESIGNER IS RESPONSIBLE FOR THE PROTECTION OF THE CONSTRUCTION AND MAY NOT BE ALTERED, COPIED, OR REPRODUCED WITHOUT THEIR SPECIFIC WRITTEN CONSENT. THE CONTRACTOR MUST CHECK AND VERIFY ALL DETAILS AND DIMENSIONS OF THE JOB & BE RESPONSIBLE FOR OBTAINING ALL NECESSARY PERMITS AND APPROVALS TO THE CONSTRUCTION PROJECT BEFORE COMMENCING WORK. ALL DIMENSIONS, DETAILS AND SPECIFICATIONS ARE TO BE USED FOR CONSTRUCTION ONLY WHEN SHOWN BY THE DRAWING.

PROJECT NO. 15037800

CLIENT: WINNERS

SCALE: AS NOTED

DATE: 2019

000

WINNERS, LOCATION, CITY, PROVINCE

WINNERS CITY, PROVINCE WINDOW & ROOM SCHEDULES

PROJECT NO. 15037800

CLIENT: WINNERS

SCALE: AS NOTED

DATE: 2019

000

WINNERS, LOCATION, CITY, PROVINCE

WINNERS CITY, PROVINCE WINDOW & ROOM SCHEDULES



